

Product Datasheet

Cyclin D1 Rabbit pAb Antibody (orb763762)

Catalog Number	orb763762
Category	Antibodies
Description	Rabbit polyclonal antibody to Cyclin D1
Clonality	Polyclonal
Isotype	IgG
Conjugation	Unconjugated
Reactivity	Mouse, Rat
Concentration	1mg/mL
Buffer/Preservatives	PBS with 0.02% sodium azide and 50% glycerol pH 7.4.
Immunogen	Recombinant Protein
UniProt ID	P24385
MW	36kDa
Tested applications	IHC, WB
Dilution range	WB 1:500-1,000 IHC 1:100-200
Specificity	Human
Source	Rabbit
Storage	Maintain refrigerated at 2-8°C for up to 2 weeks. For long term storage store at -20°C in small aliquots to prevent freeze-thaw cycles.

Biorbyt Ltd.

7 Signet Court, Swann Road
Cambridge
CB5 8LA
United Kingdom

Email: info@biorbyt.com, support@biorbyt.com
Phone: [+44 \(0\)1223 859353](tel:+44(0)1223859353) | Fax: [+1 \(415\) 651-8558](tel:+1(415)651-8558)

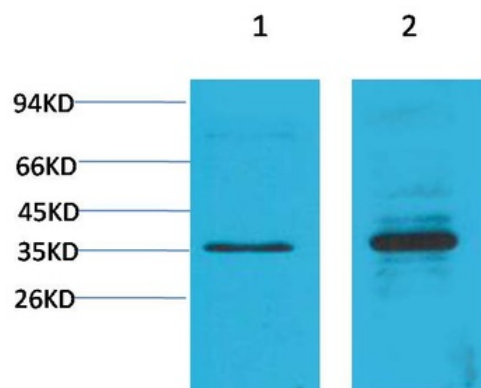
Biorbyt LLC

68 TW Alexander Drive
Research Triangle Park
Durham
NC 27713-2847
United States

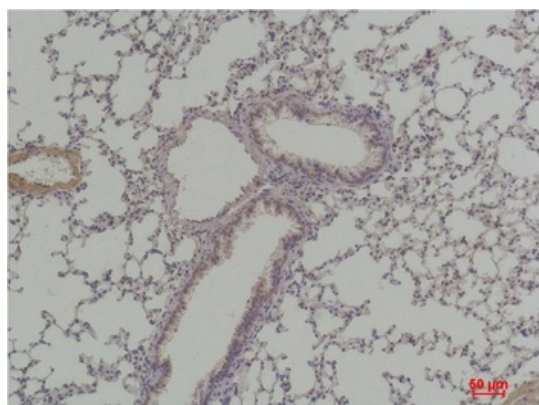
Email: info@biorbyt.com, support@biorbyt.com
Phone: [+1 \(415\) 906-5211](tel:+1(415)906-5211) | Fax: [+1 \(415\) 651-8558](tel:+1(415)651-8558)

Note For research use only

Expiration Date 12 months from date of receipt.



Western blot analysis of 1) C2C12, 2) Rat Heart Tissue with Cyclin D1 Rabbit pAb orb763762 diluted at 1:2,000.



Immunohistochemical analysis of paraffin-embedded Mouse Lung Tissue using Cyclin D1 (orb763762) Rabbit pAb diluted at 1:200.

Biorbyt Ltd.

7 Signet Court, Swann Road
Cambridge
CB5 8LA
United Kingdom

Email: info@biorbyt.com, support@biorbyt.com

Phone: +44 (0)1223 859353 | Fax: +1 (415) 651-8558

Biorbyt LLC

68 TW Alexander Drive
Research Triangle Park
Durham
NC 27713-2847
United States

Email: info@biorbyt.com, support@biorbyt.com

Phone: +1 (415) 906-5211 | Fax: +1 (415) 651-8558