

## Product Datasheet

### GFP-Tag Mouse mAb Antibody (orb763466)

|                             |   |
|-----------------------------|---|
| <b>Catalog Number</b>       | orb763466   |
| <b>Category</b>             | Antibodies  |
| <b>Description</b>          | Mouse monoclonal antibody to GFP-Tag  |
| <b>Clonality</b>            | Monoclonal  |
| <b>Isotype</b>              | IgG1  |
| <b>Conjugation</b>          | Unconjugated  |
| <b>Concentration</b>        | 1mg/mL  |
| <b>Buffer/Preservatives</b> | PBS with 0.02% sodium azide and 50% glycerol pH 7.4. Store at -20°C. Avoid repeated freeze-thaw cycles.                                 |
| <b>Immunogen</b>            | Recombinant Protein   |
| <b>Tested applications</b>  | IP, WB  |
| <b>Dilution range</b>       | WB 1:5,000 IP 1:200   |
| <b>Source</b>               | Mouse   |
| <b>Storage</b>              | Maintain refrigerated at 2-8°C for up to 2 weeks. For long term storage store at -20°C in small aliquots to prevent freeze-thaw cycles. |
| <b>Note</b>                 | For research use only   |
| <b>Expiration Date</b>      | 12 months from date of receipt.   |

**Biorbyt Ltd.**

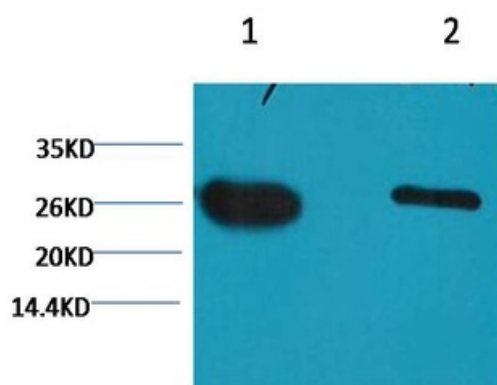
7 Signet Court, Swann Road  
Cambridge  
CB5 8LA  
United Kingdom

Email: [info@biorbyt.com](mailto:info@biorbyt.com), [support@biorbyt.com](mailto:support@biorbyt.com)  
Phone: [+44 \(0\)1223 859353](tel:+44(0)1223859353) | Fax: [+1 \(415\) 651-8558](tel:+1(415)651-8558)

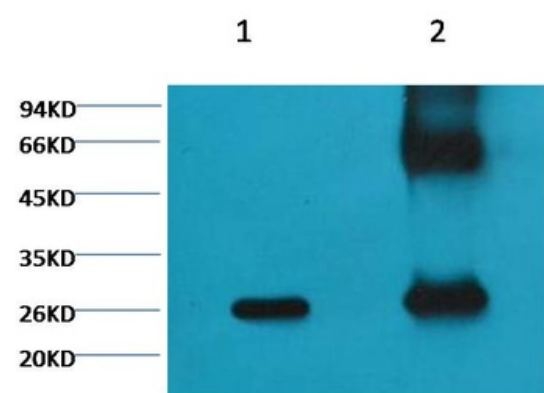
**Biorbyt LLC**

68 TW Alexander Drive  
Research Triangle Park  
Durham  
NC 27713  
United States

Email: [info@biorbyt.com](mailto:info@biorbyt.com), [support@biorbyt.com](mailto:support@biorbyt.com)  
Phone: [+1 \(415\) 906-5211](tel:+1(415)906-5211) | Fax: [+1 \(415\) 651-8558](tel:+1(415)651-8558)



Western blot analysis of GFP transfected Hela with orb763466 diluted at 1) 1:5, 000 2) 1:10, 000.



Western blot analysis of GFP transfected Hela with orb763466 diluted at 1:200 1) Input (control) 2) IP products, antibody dilution 1:200, Secondary antibody: Goat anti-Mouse IgG, Heavy chain specific (S002F), 1:5000.

**Biorbyt Ltd.**

7 Signet Court, Swann Road  
Cambridge  
CB5 8LA  
United Kingdom

Email: [info@biorbyt.com](mailto:info@biorbyt.com), [support@biorbyt.com](mailto:support@biorbyt.com)

Phone: [+44 \(0\)1223 859353](tel:+44(0)1223859353) | Fax: [+1 \(415\) 651-8558](tel:+1(415)651-8558)

**Biorbyt LLC**

68 TW Alexander Drive  
Research Triangle Park  
Durham  
NC 27713  
United States

Email: [info@biorbyt.com](mailto:info@biorbyt.com), [support@biorbyt.com](mailto:support@biorbyt.com)

Phone: [+1 \(415\) 906-5211](tel:+1(415)906-5211) | Fax: [+1 \(415\) 651-8558](tel:+1(415)651-8558)