

## Product Datasheet

### mCherry Antibody (orb763362)

<b>Catalog Number</b>	orb763362
<b>Category</b>	Antibodies
<b>Description</b>	Rabbit polyclonal antibody to mCherry
<b>Target</b>	mCherry
<b>Clonality</b>	Polyclonal
<b>Isotype</b>	Rabbit polyclonal
<b>Conjugation</b>	Unconjugated
<b>Concentration</b>	1 mg/ml
<b>Buffer/Preservatives</b>	Phosphate buffered saline (PBS), pH 7.4, 15 mM sodium azide
<b>Purification</b>	Purified by protein-A affinity chromatography.
<b>Immunogen</b>	mCherry protein from Anaplasma marginale
<b>UniProt ID</b>	<b>X5DSL3</b>
<b>Tested applications</b>	FC, ICC, WB
<b>Application notes</b>	Flow cytometry: Recommended dilution: 1-4 µg/ml, extracellular staining or intracellular staining - depending on expression. Western blotting: Recommended dilution: 1-2 µg/ml.
<b>Specificity</b>	The rabbit polyclonal antibody PAb (918) recognizes a red fluorescent protein tag mCherry.
<b>Antibody Type</b>	Primary Antibody

#### Biorbyt Ltd.

7 Signet Court, Swann Road  
Cambridge  
CB5 8LA  
United Kingdom

Email: [info@biorbyt.com](mailto:info@biorbyt.com), [support@biorbyt.com](mailto:support@biorbyt.com)

Phone: [+44 \(0\)1223 859353](tel:+44(0)1223859353) | Fax: [+1 \(415\) 651-8558](tel:+1(415)651-8558)

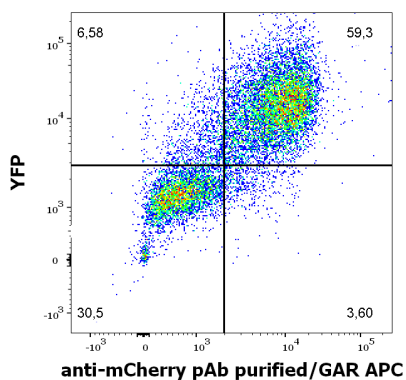
#### Biorbyt LLC

68 TW Alexander Drive  
Research Triangle Park  
Durham  
NC 27713  
United States

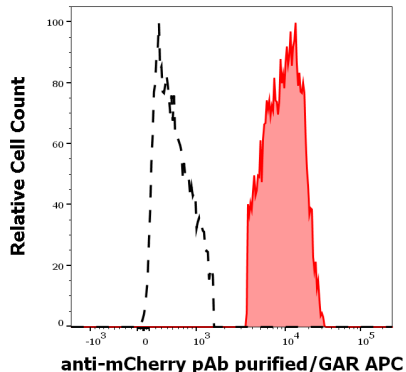
Email: [info@biorbyt.com](mailto:info@biorbyt.com), [support@biorbyt.com](mailto:support@biorbyt.com)

Phone: [+1 \(415\) 906-5211](tel:+1(415)906-5211) | Fax: [+1 \(415\) 651-8558](tel:+1(415)651-8558)

<b>Storage</b>	Maintain refrigerated at 2-8°C for up to 2 weeks. For long term storage store at -20°C in small aliquots to prevent freeze-thaw cycles.
<b>Note</b>	For research use only
<b>Entrez</b>	<b>35</b>
<b>Expiration Date</b>	12 months from date of receipt.



Flow cytometry surface staining pattern of HEK293T/17 cells co-transfected with mCherry/GPI and YFP/GPI constructs stained using anti-mCherry Purified rabbit polyclonal antibody (concentration in sample 2 µg/ml, GAR APC).



Separation of HEK293T/17 cells co-transfected with mCherry/GPI and YFP/GPI constructs stained anti-mCherry Purified rabbit polyclonal antibody (concentration in sample 2 µg/ml, GAR APC, red-filled) from HEK293T/17 cells co-transfected with mCherry/GPI and YFP/GPI constructs unstained by primary polyclonal antibody (GAR APC, black-dashed) in flow cytometry analysis (surface staining) of HEK293T17/mCherry/YFP cell suspension.

**Biorbyt Ltd.**

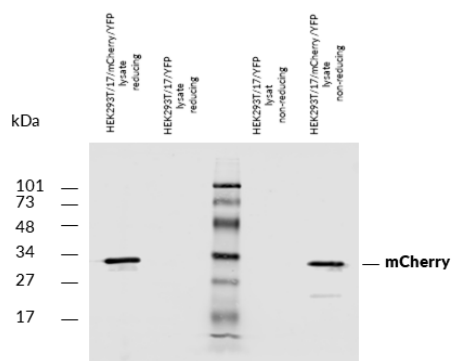
7 Signet Court, Swann Road  
Cambridge  
CB5 8LA  
United Kingdom

Email: [info@biorbyt.com](mailto:info@biorbyt.com), [support@biorbyt.com](mailto:support@biorbyt.com)  
Phone: +44 (0)1223 859353 | Fax: +1 (415) 651-8558

**Biorbyt LLC**

68 TW Alexander Drive  
Research Triangle Park  
Durham  
NC 27713  
United States

Email: [info@biorbyt.com](mailto:info@biorbyt.com), [support@biorbyt.com](mailto:support@biorbyt.com)  
Phone: +1 (415) 906-5211 | Fax: +1 (415) 651-8558



Western blotting analysis of mCherry fluorescent protein using rabbit polyclonal PAb (918) on lysates of HEK293T/17 cells co-transfected with mCherry/GPI and YFP/GPI constructs (HEK293T/17 cells transfected with YFP/GPI; negative control) under reducing and non-reducing conditions. Nitrocellulose membrane was probed with 2  $\mu\text{g}/\text{ml}$  of rabbit anti-mCherry polyclonal antibody followed by IRDye800-conjugated anti-rabbit secondary antibody. A specific band was detected for mCherry protein at approximately 30 kDa.

**Biorbyt Ltd.**

7 Signet Court, Swann Road  
Cambridge  
CB5 8LA  
United Kingdom

Email: [info@biorbyt.com](mailto:info@biorbyt.com), [support@biorbyt.com](mailto:support@biorbyt.com)

Phone: +44 (0)1223 859353 | Fax: +1 (415) 651-8558

**Biorbyt LLC**

68 TW Alexander Drive  
Research Triangle Park  
Durham  
NC 27713  
United States

Email: [info@biorbyt.com](mailto:info@biorbyt.com), [support@biorbyt.com](mailto:support@biorbyt.com)

Phone: +1 (415) 906-5211 | Fax: +1 (415) 651-8558