

## Product Datasheet

### Anti-CD36 [185-1G2 (B467)] (orb758920)

<b>Catalog Number</b>	orb758920
<b>Category</b>	Antibodies
<b>Description</b>	Mouse monoclonal antibody to CD36
<b>Target</b>	CD36
<b>Clonality</b>	Monoclonal
<b>Species/Host</b>	Mouse
<b>Isotype</b>	IgM
<b>Conjugation</b>	Unconjugated
<b>Reactivity</b>	Human
<b>Concentration</b>	1 mg/ml
<b>Buffer/Preservatives</b>	PBS with 0.02% Proclin 300.
<b>Purity</b>	Purified
<b>Immunogen</b>	This antibody was raised by immunizing mice with stimulated human leukocytes.
<b>UniProt ID</b>	<b>Q8WTV0</b>
<b>Tested applications</b>	Blocking, FC, IF, IHC, IP

#### Biorbyt Ltd.

7 Signet Court, Swann Road  
Cambridge  
CB5 8LA  
United Kingdom

Email: [info@biorbyt.com](mailto:info@biorbyt.com), [support@biorbyt.com](mailto:support@biorbyt.com)

Phone: [+44 \(0\)1223 859353](tel:+44(0)1223859353) | Fax: [+1 \(415\) 651-8558](tel:+1(415)651-8558)

#### Biorbyt LLC

68 TW Alexander Drive  
Research Triangle Park  
Durham  
NC 27713  
United States

Email: [info@biorbyt.com](mailto:info@biorbyt.com), [support@biorbyt.com](mailto:support@biorbyt.com)

Phone: [+1 \(415\) 906-5211](tel:+1(415)906-5211) | Fax: [+1 \(415\) 651-8558](tel:+1(415)651-8558)

**Specificity**

This antibody is specific against CD36. The antibody recognises an epitope between amino acids 155 - 183. CD36 is a receptor for different ligands such as phospholipids, cholesterol ester, lipoproteins, phosphatidylserine and apoptotic cells. It acts as a receptor for hepatitis C virus in hepatocytes and appears to facilitate its cell entry as well as mediates uptake of *M. fortuitum*, *E. coli* and *S. aureus*.

**Clone Number**

185-1G2 (B467)

**Storage**

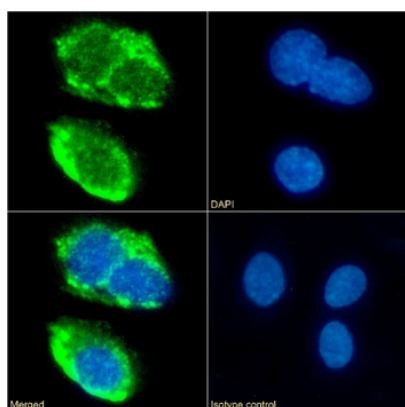
Maintain refrigerated at 2-8°C for up to 2 weeks. For long term storage store at -20°C in small aliquots to prevent freeze-thaw cycles.

**Note**

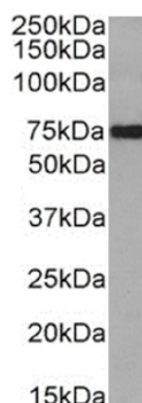
For research use only

**Expiration Date**

12 months from date of receipt.



Immunofluorescence staining of fixed HepG2 cells with anti-CD36 antibody 185-1G2 (B467). Immunofluorescence analysis of paraformaldehyde fixed HepG2 cells on Shi-fix™ coverslips stained with the chimeric rabbit IgG version of 185-1G2 (B467) (orb758921) at 10 µg/ml for 1h followed by Alexa Fluor® 488 secondary antibody (2 µg/ml), showing membrane staining. The nuclear stain is DAPI (blue). Panels show from left-right, top-bottom orb758921, DAPI, merged channels and an isotype control. The isotype control was an unknown specificity antibody (orb256458) followed by staining with Alexa Fluor® 488 secondary antibody.



Western Blot using anti-CD36 antibody 185-1G2 (B467) Human peripheral blood monocyte cell lysate (35 µg protein in RIPA buffer) was resolved on a SDS PAGE gel and blots were probed with the chimeric rabbit version of 185-1G2 (B467) (orb758921) at 0.03 µg/ml before detection using an anti-rabbit secondary antibody. A primary incubation of 1h was used and protein was detected by chemiluminescence.

**Biorbyt Ltd.**

7 Signet Court, Swann Road  
Cambridge  
CB5 8LA  
United Kingdom

Email: [info@biorbyt.com](mailto:info@biorbyt.com), [support@biorbyt.com](mailto:support@biorbyt.com)

Phone: +44 (0)1223 859353 | Fax: +1 (415) 651-8558

**Biorbyt LLC**

68 TW Alexander Drive  
Research Triangle Park  
Durham  
NC 27713  
United States

Email: [info@biorbyt.com](mailto:info@biorbyt.com), [support@biorbyt.com](mailto:support@biorbyt.com)

Phone: +1 (415) 906-5211 | Fax: +1 (415) 651-8558