

Product Datasheet

EpCAM Antibody / Extracellular domain (orb750043)

Catalog Number	orb750043
Category	Antibodies
Description	<p>EpCAM (Epithelial Cell Adhesion Molecule), also known as CD326, plays a crucial role in various cellular processes and has been linked to the development and progression of cancer. EpCAM is a transmembrane glycoprotein that is expressed in high levels on the surface of epithelial cells. In cancer cells, the expression of EpCAM is often upregulated, leading to increased cell proliferation, invasion, and metastasis. Studies have shown that high levels of EpCAM are associated with poor prognosis in various types of cancer, including breast, colon, and lung cancer. The overexpression of EpCAM in cancer cells makes it an attractive target for diagnostic and therapeutic purposes. Researchers are exploring the use of EpCAM as a biomarker for early cancer detection through blood tests and imaging techniques. In addition, EpCAM-targeted therapies, such as monoclonal antibodies and immunotherapies, are being developed to specifically target and kill cancer cells that overexpress EpCAM.</p>
Clonality	Monoclonal
Species/Host	Mouse
Isotype	Mouse IgG
Conjugation	Unconjugated
Reactivity	Canine, Feline, Guinea pig, Human
Buffer/Preservatives	0.2 mg/ml in 1X PBS with 0.1 mg/ml rAlbumin and 0.05% sodium azide
Purification	Protein G affinity chromatography

Biorbyt Ltd.

7 Signet Court, Swann Road
Cambridge
CB5 8LA
United Kingdom

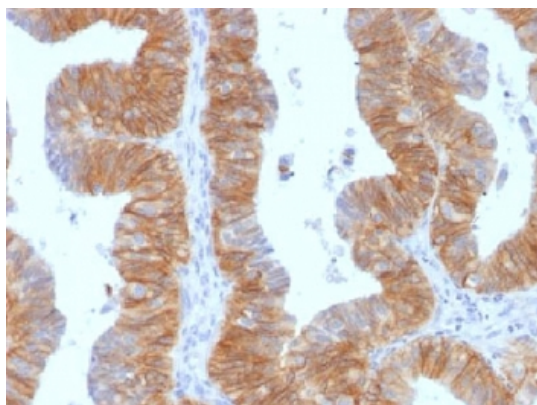
Email: info@biorbyt.com, support@biorbyt.com
Phone: [+44 \(0\)1223 859353](tel:+44(0)1223859353) | Fax: [+1 \(415\) 651-8558](tel:+1(415)651-8558)

Biorbyt LLC

68 TW Alexander Drive
Research Triangle Park
Durham
NC 27713
United States

Email: info@biorbyt.com, support@biorbyt.com
Phone: [+1 \(415\) 906-5211](tel:+1(415)906-5211) | Fax: [+1 \(415\) 651-8558](tel:+1(415)651-8558)

Immunogen	A human partial recombinant protein corresponding to amino acids 100-224 (extracellular domain) was used as the immunogen for the EpCAM antibody.
UniProt ID	P16422
Tested applications	ELISA, IF, IHC-P, WB
Dilution range	ELISA: order BSA/sodium azide-free format for coating, Immunofluorescence: 1-2ug/ml, Immunohistochemistry (FFPE): 1-2ug/ml for 30 min at RT, Western blot: 1-2ug/ml
Application notes	Titering of the EpCAM antibody may be required for optimal performance.
Antibody Type	Primary Antibody
Clone Number	EGP40/1384
Storage	Maintain refrigerated at 2-8°C for up to 2 weeks. For long term storage store at -20°C in small aliquots to prevent freeze-thaw cycles.
Note	For research use only
Expiration Date	12 months from date of receipt.



IHC testing of FFPE human ovarian carcinoma and EpCAM antibody (clone EGP40/1384). Required HIER: steam sections in pH6 citrate buffer for 10-20 min.

Biorbyt Ltd.

7 Signet Court, Swann Road
Cambridge
CB5 8LA
United Kingdom

Email: info@biorbyt.com, support@biorbyt.com

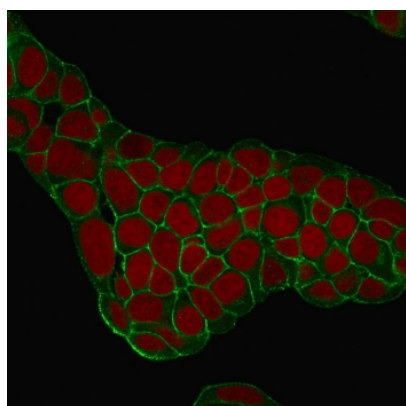
Phone: [+44 \(0\)1223 859353](tel:+44(0)1223859353) | Fax: [+1 \(415\) 651-8558](tel:+1(415)6518558)

Biorbyt LLC

68 TW Alexander Drive
Research Triangle Park
Durham
NC 27713
United States

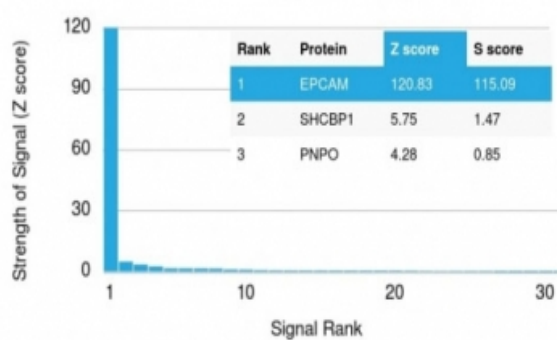
Email: info@biorbyt.com, support@biorbyt.com

Phone: [+1 \(415\) 906-5211](tel:+1(415)9065211) | Fax: [+1 \(415\) 651-8558](tel:+1(415)6518558)

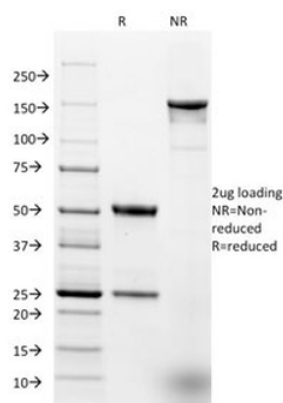


Immunofluorescent staining of human MCF-7 cells with EpCAM antibody (green, clone EGP40/1384) and Reddot nuclear stain (red).

Human Protein Microarray Specificity Validation



Analysis of HuProt (TM) microarray containing more than 19,000 full-length human proteins using EpCAM antibody (clone EGP40/1384). These results demonstrate the foremost specificity of the EGP40/1384 mAb. Z- and S- score: The Z-score represents the strength of a signal that an antibody (in combination with a fluorescently-tagged anti-IgG secondary Ab) produces when binding to a particular protein on the HuProt (TM) array. Z-scores are described in units of standard deviations (SD's) above the mean value of all signals generated on that array. If the targets on the HuProt (TM) are arranged in descending order of the Z-score, the S-score is the difference (also in units of SD's) between the Z-scores. The S-score therefore represents the relative target specificity of an Ab to its intended target.



SDS-PAGE analysis of purified, BSA-free EpCAM antibody (clone EGP40/1384) as confirmation of integrity and purity.

Biorbyt Ltd.

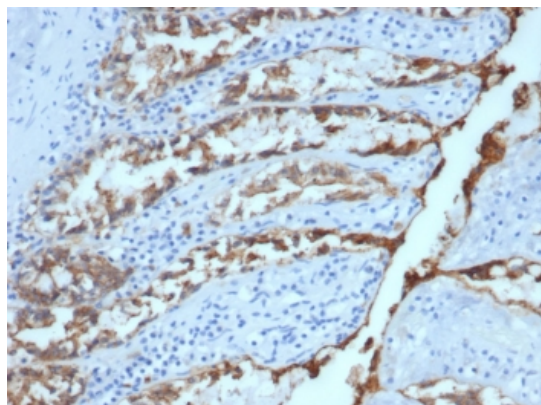
7 Signet Court, Swann Road
Cambridge
CB5 8LA
United Kingdom

Email: info@biorbyt.com, support@biorbyt.com
Phone: +44 (0)1223 859353 | Fax: +1 (415) 651-8558

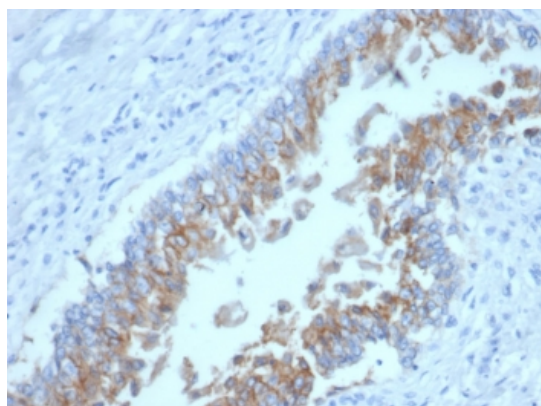
Biorbyt LLC

68 TW Alexander Drive
Research Triangle Park
Durham
NC 27713
United States

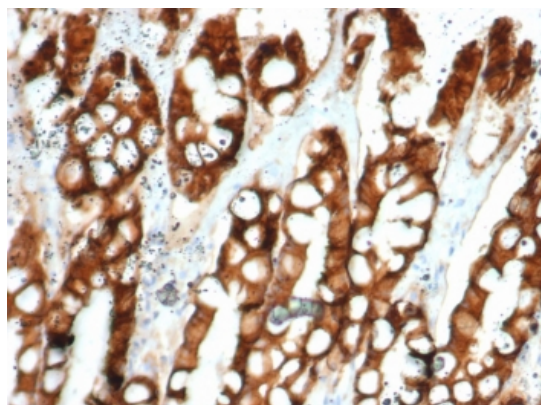
Email: info@biorbyt.com, support@biorbyt.com
Phone: +1 (415) 906-5211 | Fax: +1 (415) 651-8558



IHC testing of FFPE dog colon and EpCAM antibody (clone EGP40/1384). HIER: steam sections in pH9 EDTA for 10-20 min.



IHC testing of FFPE dog bladder and EpCAM antibody (clone EGP40/1384). HIER: steam sections in pH9 EDTA for 10-20 min.



IHC testing of FFPE cat small intestine and EpCAM antibody (clone EGP40/1384). HIER: steam sections in pH9 EDTA for 10-20 min.

Biorbyt Ltd.

7 Signet Court, Swann Road
Cambridge
CB5 8LA
United Kingdom

Email: info@biorbyt.com, support@biorbyt.com

Phone: [+44 \(0\)1223 859353](tel:+44(0)1223859353) | Fax: [+1 \(415\) 651-8558](tel:+1(415)651-8558)

Biorbyt LLC

68 TW Alexander Drive
Research Triangle Park
Durham
NC 27713
United States

Email: info@biorbyt.com, support@biorbyt.com

Phone: [+1 \(415\) 906-5211](tel:+1(415)906-5211) | Fax: [+1 \(415\) 651-8558](tel:+1(415)651-8558)