

## Product Datasheet

# TRAP/CD40L/CD40LG Rabbit Polyclonal Antibody (orb745937)

<b>Catalog Number</b>	orb745937
<b>Category</b>	Antibodies
<b>Description</b>	Anti-TRAP/CD40L/CD40LG Antibody. Tested in ELISA, Flow Cytometry, WB applications. This antibody reacts with Human, Mouse, Rat.
<b>Target</b>	CD40 ligand
<b>Clonality</b>	Polyclonal
<b>Species/Host</b>	Rabbit
<b>Isotype</b>	Rabbit IgG
<b>Conjugation</b>	Unconjugated
<b>Reactivity</b>	Human, Mouse, Rat
<b>Form/Appearance</b>	Lyophilized
<b>Concentration</b>	500 µg/ml
<b>Buffer/Preservatives</b>	Each vial contains 4mg Trehalose, 0.9mg NaCl, 0.2mg Na <sub>2</sub> HPO <sub>4</sub> .
<b>Reconstitution</b>	Add 0.2ml of distilled water will yield a concentration of 500ug/ml.
<b>Purification</b>	Immunogen affinity purified.
<b>Immunogen</b>	E.coli-derived human TRAP/CD40L/CD40LG recombinant protein (Position: E76-H249).
<b>UniProt ID</b>	<b>P29965</b>

### Biorbyt Ltd.

7 Signet Court, Swann Road  
Cambridge  
CB5 8LA  
United Kingdom

Email: [info@biorbyt.com](mailto:info@biorbyt.com), [support@biorbyt.com](mailto:support@biorbyt.com)

Phone: [+44 \(0\)1223 859353](tel:+44(0)1223859353) | Fax: [+1 \(415\) 651-8558](tel:+1(415)651-8558)

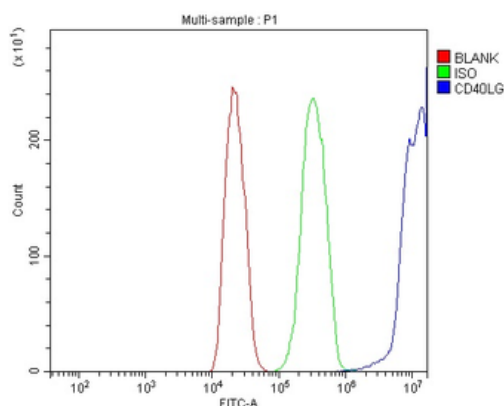
### Biorbyt LLC

68 TW Alexander Drive  
Research Triangle Park  
Durham  
NC 27713  
United States

Email: [info@biorbyt.com](mailto:info@biorbyt.com), [support@biorbyt.com](mailto:support@biorbyt.com)

Phone: [+1 \(415\) 906-5211](tel:+1(415)906-5211) | Fax: [+1 \(415\) 651-8558](tel:+1(415)651-8558)

<b>MW</b>	36 kDa
<b>Tested applications</b>	ELISA, FC, WB
<b>Dilution range</b>	Western blot, 0.25-0.5µg/ml, Human, Mouse, Rat Flow Cytometry (Fixed), 1-3µg/1x10 <sup>6</sup> cells, Human, Rat ELISA, 0.1-0.5µg/ml, -
<b>Cross Reactivity</b>	No cross-reactivity with other proteins.
<b>Antibody Type</b>	Primary Antibody
<b>Storage</b>	Maintain refrigerated at 2-8°C for up to 2 weeks. For long term storage store at -20°C in small aliquots to prevent freeze-thaw cycles.
<b>Note</b>	For research use only
<b>Expiration Date</b>	12 months from date of receipt.



Flow Cytometry analysis of C6 cells using anti-TRAP/CD40L/CD40LG antibody. Overlay histogram showing C6 cells (Blue line). The cells were fixed with 4% paraformaldehyde and blocked with 10% normal goat serum. And then incubated with rabbit anti-TRAP/CD40L/CD40LG Antibody (1 µg/1x10<sup>6</sup> cells) for 30 min at 20°C. DyLight®488 conjugated goat anti-rabbit IgG (5-10 µg/1x10<sup>6</sup> cells) was used as secondary antibody for 30 minutes at 20°C. Isotype control antibody (Green line) was rabbit IgG (1 µg/1x10<sup>6</sup>) used under the same conditions. Unlabelled sample without incubation with primary antibody and secondary antibody (Red line) was used as a blank control.

**Biorbyt Ltd.**

7 Signet Court, Swann Road  
Cambridge  
CB5 8LA  
United Kingdom

Email: [info@biorbyt.com](mailto:info@biorbyt.com), [support@biorbyt.com](mailto:support@biorbyt.com)

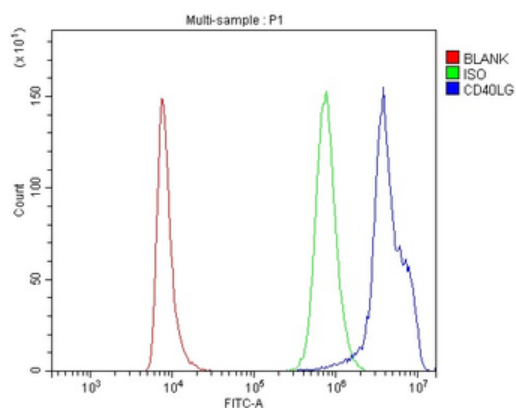
Phone: +44 (0)1223 859353 | Fax: +1 (415) 651-8558

**Biorbyt LLC**

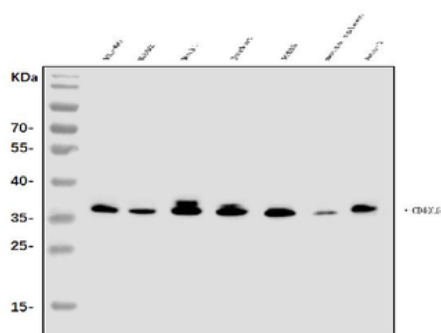
68 TW Alexander Drive  
Research Triangle Park  
Durham  
NC 27713  
United States

Email: [info@biorbyt.com](mailto:info@biorbyt.com), [support@biorbyt.com](mailto:support@biorbyt.com)

Phone: +1 (415) 906-5211 | Fax: +1 (415) 651-8558



Flow Cytometry analysis of human PBMC cells using anti-TRAP/CD40L/CD40LG antibody. Overlay histogram showing human PBMC cells (Blue line). The cells were fixed with 4% paraformaldehyde and blocked with 10% normal goat serum. And then incubated with rabbit anti-TRAP/CD40L/CD40LG Antibody (1  $\mu\text{g}/1 \times 10^6$  cells) for 30 min at 20°C. DyLight®488 conjugated goat anti-rabbit IgG (5-10  $\mu\text{g}/1 \times 10^6$  cells) was used as secondary antibody for 30 minutes at 20°C. Isotype control antibody (Green line) was rabbit IgG (1  $\mu\text{g}/1 \times 10^6$ ) used under the same conditions. Unlabelled sample without incubation with primary antibody and secondary antibody (Red line) was used as a blank control.



Western blot analysis of TRAP/CD40L/CD40LG using anti-TRAP/CD40L/CD40LG antibody. Electrophoresis was performed on a 5-20% SDS-PAGE gel at 70V (Stacking gel) / 90V (Resolving gel) for 2-3 hours. The sample well of each lane was loaded with 30  $\mu\text{g}$  of sample under reducing conditions. Lane 1: human HL-60 whole cell lysates, Lane 2: human K562 whole cell lysates, Lane 3: human Raji whole cell lysates, Lane 4: human Jurkat whole cell lysates, Lane 5: rat RH35 whole cell lysates, Lane 6: mouse spleen tissue lysates, Lane 7: mouse ANA-1 whole cell lysates. After Electrophoresis, proteins were transferred to a Nitrocellulose membrane at 150 mA for 50-90 minutes. Blocked the membrane with 5% Non-fat Milk/ TBS for 1.5 hour at RT. The membrane was incubated with rabbit anti-TRAP/CD40L/CD40LG antigen affinity purified polyclonal antibody at 0.5  $\mu\text{g}/\text{mL}$  overnight at 4°C, then washed with TBS-0.1% Tween 3 times with 5 minutes each and probed with a goat anti-rabbit IgG-HRP secondary antibody at a dilution of 1:5000 for 1.5 hour at RT. The signal is developed using an Enhanced Chemiluminescent detection (ECL) kit with Tanon 5200 system. A specific band was detected for TRAP/CD40L/CD40LG at approximately 36 KD. The expected band size for TRAP/CD40L/CD40LG is at 36 KD.

**Biorbyt Ltd.**

7 Signet Court, Swann Road  
Cambridge  
CB5 8LA  
United Kingdom

Email: [info@biorbyt.com](mailto:info@biorbyt.com), [support@biorbyt.com](mailto:support@biorbyt.com)  
Phone: +44 (0)1223 859353 | Fax: +1 (415) 651-8558

**Biorbyt LLC**

68 TW Alexander Drive  
Research Triangle Park  
Durham  
NC 27713  
United States

Email: [info@biorbyt.com](mailto:info@biorbyt.com), [support@biorbyt.com](mailto:support@biorbyt.com)  
Phone: +1 (415) 906-5211 | Fax: +1 (415) 651-8558