

Product Datasheet

Lysine Colorimetric Microplate Assay Kit (orb707365)

Catalog Number	orb707365
Category	Assays and Kits
Description	Detection and Quantification of Lysine Content.
Reactivity	All
Tested applications	FA
Application notes	Detection Method: Colorimetric
Assay Type	Detection
Range	0.1 mmol/L - 5 mmol/L
Sample Types	Serum, Plasma, Tissue extracts, Cell lysate, Cell culture media, Other biological fluids
CAS Number	657-27-2
Storage	Shipped and store at 4°C for 6 months.
Note	For research use only
Expiration Date	Please enquire.

Biorbyt Ltd.

7 Signet Court, Swann Road
Cambridge
CB5 8LA
United Kingdom

Email: info@biorbyt.com, support@biorbyt.com

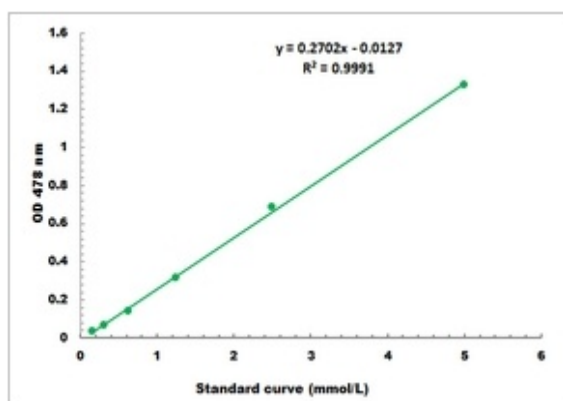
Phone: [+44 \(0\)1223 859353](tel:+44(0)1223859353) | Fax: [+1 \(415\) 651-8558](tel:+1(415)6518558)

Biorbyt LLC

68 TW Alexander Drive
Research Triangle Park
Durham
NC 27713
United States

Email: info@biorbyt.com, support@biorbyt.com

Phone: [+1 \(415\) 906-5211](tel:+1(415)9065211) | Fax: [+1 \(415\) 651-8558](tel:+1(415)6518558)



Representative Standard Curve

Biorbyt Ltd.

7 Signet Court, Swann Road
Cambridge
CB5 8LA
United Kingdom

Email: info@biorbyt.com, support@biorbyt.com

Phone: [+44 \(0\)1223 859353](tel:+44(0)1223859353) | Fax: [+1 \(415\) 651-8558](tel:+1(415)651-8558)

Biorbyt LLC

68 TW Alexander Drive
Research Triangle Park
Durham
NC 27713
United States

Email: info@biorbyt.com, support@biorbyt.com

Phone: [+1 \(415\) 906-5211](tel:+1(415)906-5211) | Fax: [+1 \(415\) 651-8558](tel:+1(415)651-8558)