

Product Datasheet

Tau Antibody (PerCP) (orb699476)

Catalog Number	orb699476
Category	Antibodies
Description	Rabbit polyclonal antibody against Truncated Tau Fragment conjugated to PerCP
Target	Tau
Clonality	Polyclonal
Species/Host	Rabbit
Conjugation	PerCP
Reactivity	Human, Mouse, Rat
Concentration	1mg/mL
Buffer/Preservatives	95.46mM Phosphate, 2.48mM MES and 2mM EDTA
Purification	Protein A
Immunogen	Recombinant Human Tau AA297-391 (dGAE) Fibril (SPR-461)
UniProt ID	P10636
MW	10.2 kDa
Tested applications	WB
Dilution range	WB (1:1000)
Application notes	A 1:1000 dilution was sufficient for detection of tau in 15 µg of mouse, rat brain cell lysates by ECL immunoblot analysis using goat anti-rabbit IgG:HRP as the secondary antibody.

Biorbyt Ltd.

7 Signet Court, Swann Road
Cambridge
CB5 8LA
United Kingdom

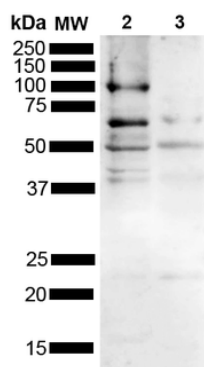
Email: info@biorbyt.com, support@biorbyt.com
Phone: [+44 \(0\)1223 859353](tel:+44(0)1223859353) | Fax: [+1 \(415\) 651-8558](tel:+1(415)651-8558)

Biorbyt LLC

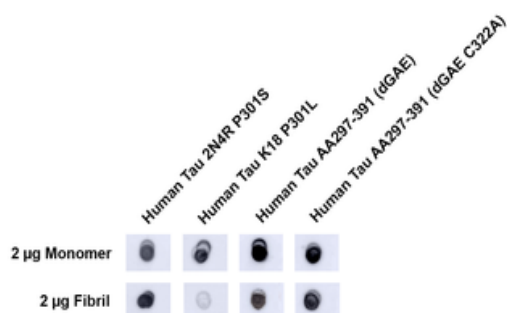
68 TW Alexander Drive
Research Triangle Park
Durham
NC 27713
United States

Email: info@biorbyt.com, support@biorbyt.com
Phone: [+1 \(415\) 906-5211](tel:+1(415)906-5211) | Fax: [+1 \(415\) 651-8558](tel:+1(415)651-8558)

Specificity	Detects ~10.2 kDa.
Storage	Conjugated antibodies should be stored according to the product label
Note	For research use only
Entrez	4137
NCBI	NP_005901.2
Expiration Date	12 months from date of receipt.



Western blot analysis of Mouse, Rat Brain showing detection of Multiple bands due to different isoforms/aggregation states Tau protein using Rabbit Anti-Tau Polyclonal Antibody. Lane 1: MW Ladder. Lane 2: Mouse brain (15 ug). Lane 2: Rat brain (15 ug). Load: 15 ug. Block: 5% Skim Milk powder in TBST. Primary Antibody: Rabbit Anti-Tau Polyclonal Antibody at 1:1000 for 2 hours at RT with shaking. Secondary Antibody: Goat anti-rabbit IgG:HRP at 1:4000 for 1 hour at RT with shaking. Color Development: Chemiluminescent for HRP (Moss) for 5 min in RT. Predicted/Observed Size: Multiple bands due to different isoforms/aggregation states. Other Band (s): 50 kDa, 65 kDa, 100 kDa.



Dot blot analysis using Rabbit Anti-Tau Polyclonal Antibody. Tissue: Recombinant Tau Monomers and Fibrils. Species: Human. Primary Antibody: Rabbit Anti-Tau Polyclonal Antibody at 1:1000 for 2 hours at RT with shaking. Secondary Antibody: Goat anti-rabbit IgG:HRP at 1:4000 for 1 hour at RT with shaking.

Biorbyt Ltd.

7 Signet Court, Swann Road
Cambridge
CB5 8LA
United Kingdom

Email: info@biorbyt.com, support@biorbyt.com
Phone: +44 (0)1223 859353 | Fax: +1 (415) 651-8558

Biorbyt LLC

68 TW Alexander Drive
Research Triangle Park
Durham
NC 27713
United States

Email: info@biorbyt.com, support@biorbyt.com
Phone: +1 (415) 906-5211 | Fax: +1 (415) 651-8558