

Product Datasheet

Human ACE2 Protein, mFc Tag (orb689420)

Catalog Number	orb689420
Category	Proteins
Description	Recombinant human ACE2 protein with C-terminal mouse Fc tag
Target	ACE2
Conjugation	Unconjugated
Tag	C-Mouse Fc Tag
Reactivity	Human
Form/Appearance	Lyophilized from sterile PBS, pH 7.4. Normally 5 % - 8% trehalose is added as protectants before lyophilization. Please see Certificate of Analysis for specific instructions of reconstitution.
Buffer/Preservatives	Lyophilized from sterile PBS, pH 7.4. Normally 5 % - 8% trehalose is added as protectants before lyophilization. Please see Certificate of Analysis for specific instructions.
Reconstitution	Lyophilized from sterile PBS, pH 7.4. Normally 5 % - 8% trehalose is added as protectants before lyophilization. Please see Certificate of Analysis for specific instructions of reconstitution.
Purity	The purity of the protein is greater than 95% as determined by SDS-PAGE and Coomassie blue staining.
Purification	Purified from cell culture supernatant by affinity chromatography
UniProt ID	Q9BYF1
MW	The protein has a predicted molecular mass of 109.7 kDa after removal of the signal peptide.

Biorbyt Ltd.

7 Signet Court, Swann Road
Cambridge
CB5 8LA
United Kingdom

Email: info@biorbyt.com, support@biorbyt.com

Phone: [+44 \(0\)1223 859353](tel:+44(0)1223859353) | Fax: [+1 \(415\) 651-8558](tel:+1(415)651-8558)

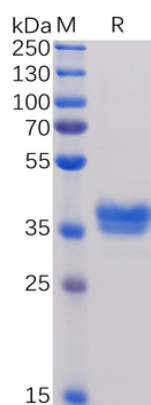
Biorbyt LLC

68 TW Alexander Drive
Research Triangle Park
Durham
NC 27713-2847
United States

Email: info@biorbyt.com, support@biorbyt.com

Phone: [+1 \(415\) 906-5211](tel:+1(415)906-5211) | Fax: [+1 \(415\) 651-8558](tel:+1(415)651-8558)

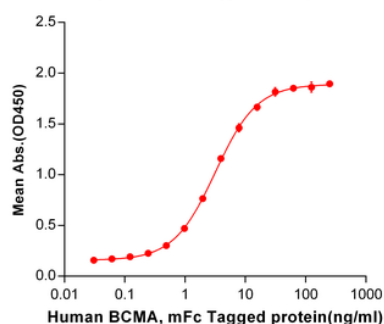
Expression System	HEK293
Source	Mammalian
Expression Region	ACE2(Gln18-Ser740) mFc(Pro99-Lys330)
Storage	Store at -20°C to -80°C for 12 months in lyophilized form. After reconstitution, if not intended for use within a month, aliquot and store at -80°C (Avoid repeated freezing and thawing). Lyophilized proteins are shipped at ambient temperature.
Note	For research use only
Expiration Date	6 months from date of receipt.



Human BCMA, mFc Tag on SDS-PAGE under reducing condition.

Human BCMA, mFc Tagged protein ELISA

0.2 µg of BAFF, hFc Tagged protein per well



ELISA plate pre-coated by 2 µg/ml (100 µL/well) Human BAFF, hFc tagged protein orb689402 can bind Human BCMA, mFc tagged protein (orb689396) in a linear range of 0.03-15.625 ng/ml.

Biorbyt Ltd.

7 Signet Court, Swann Road
Cambridge
CB5 8LA
United Kingdom

Email: info@biorbyt.com, support@biorbyt.com

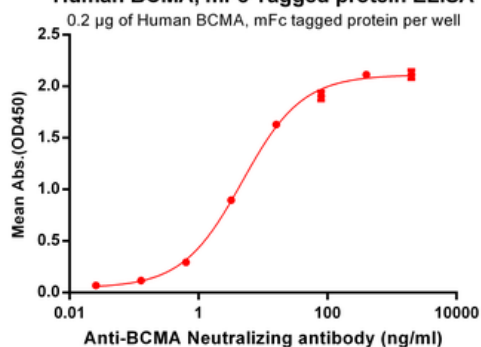
Phone: +44 (0)1223 859353 | Fax: +1 (415) 651-8558

Biorbyt LLC

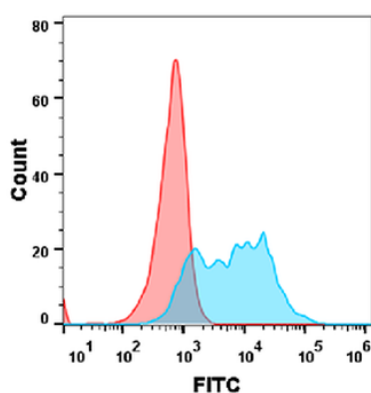
68 TW Alexander Drive
Research Triangle Park
Durham
NC 27713-2847
United States

Email: info@biorbyt.com, support@biorbyt.com

Phone: +1 (415) 906-5211 | Fax: +1 (415) 651-8558

Human BCMA, mFc Tagged protein ELISA

ELISA plate pre-coated by 2 µg/ml (100 µL/well) Human BCMA, mFc tagged protein (orb689396) can bind Anti-BCMA Neutralizing antibody orb704540 in a linear range of 0.64-80.0 ng/ml.



Flow cytometry analysis with 1 µg/ml Human BCMA Protein, mFc tag (orb689396) on Expi293 cells transfected with human BAFF (Blue histogram) or Expi293 transfected with irrelevant protein (Red histogram).

Biorbyt Ltd.

7 Signet Court, Swann Road
Cambridge
CB5 8LA
United Kingdom

Email: info@biorbyt.com, support@biorbyt.com
Phone: +44 (0)1223 859353 | Fax: +1 (415) 651-8558

Biorbyt LLC

68 TW Alexander Drive
Research Triangle Park
Durham
NC 27713-2847
United States

Email: info@biorbyt.com, support@biorbyt.com
Phone: +1 (415) 906-5211 | Fax: +1 (415) 651-8558