

## Product Datasheet

### Human BAFF Protein, hFc Tag (orb689402)

<b>Catalog Number</b>	orb689402
<b>Category</b>	Proteins
<b>Description</b>	Recombinant Human BAFF protein with N-terminal human Fc
<b>Target</b>	BAFF
<b>Conjugation</b>	Unconjugated
<b>Tag</b>	N-Human Fc Tag
<b>Reactivity</b>	Human
<b>Form/Appearance</b>	Lyophilized from sterile PBS, pH 7.4. Normally 5 % - 8% trehalose is added as protectants before lyophilization. Please see Certificate of Analysis for specific instructions of reconstitution.
<b>Buffer/Preservatives</b>	Lyophilized from sterile PBS, pH 7.4. Normally 5 % - 8% trehalose is added as protectants before lyophilization. Please see Certificate of Analysis for specific instructions.
<b>Reconstitution</b>	Lyophilized from sterile PBS, pH 7.4. Normally 5 % - 8% trehalose is added as protectants before lyophilization. Please see Certificate of Analysis for specific instructions of reconstitution.
<b>Purity</b>	The purity of the protein is greater than 95% as determined by SDS-PAGE and Coomassie blue staining.
<b>Purification</b>	Purified from cell culture supernatant by affinity chromatography
<b>UniProt ID</b>	<b>Q9Y275</b>

**Biorbyt Ltd.**

7 Signet Court, Swann Road  
Cambridge  
CB5 8LA  
United Kingdom

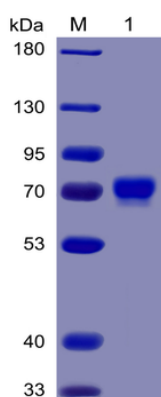
Email: [info@biorbyt.com](mailto:info@biorbyt.com), [support@biorbyt.com](mailto:support@biorbyt.com)  
Phone: [+44 \(0\)1223 859353](tel:+44(0)1223859353) | Fax: [+1 \(415\) 651-8558](tel:+1(415)651-8558)

**Biorbyt LLC**

68 TW Alexander Drive  
Research Triangle Park  
Durham  
NC 27713  
United States

Email: [info@biorbyt.com](mailto:info@biorbyt.com), [support@biorbyt.com](mailto:support@biorbyt.com)  
Phone: [+1 \(415\) 906-5211](tel:+1(415)906-5211) | Fax: [+1 \(415\) 651-8558](tel:+1(415)651-8558)

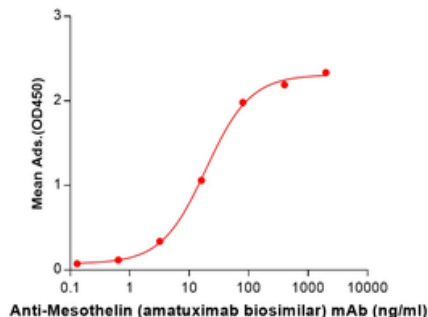
<b>MW</b>	The protein has a predicted molecular mass of 43.2 kDa after removal of the signal peptide. The apparent molecular mass of hFc-BAFF is approximately 50-55 kDa due to glycosylation.
<b>Expression System</b>	HEK293
<b>Source</b>	Mammalian
<b>Expression Region</b>	hFc(Glu99-Ala330) BAFF(Ala134-Leu285)
<b>Storage</b>	Store at -20°C to -80°C for 12 months in lyophilized form. After reconstitution, if not intended for use within a month, aliquot and store at -80°C (Avoid repeated freezing and thawing). Lyophilized proteins are shipped at ambient temperature.
<b>Note</b>	For research use only
<b>Expiration Date</b>	6 months from date of receipt.



Human Mesothelin Protein, mFc-His Tag on SDS-PAGE under reducing condition.

**Human Mesothelin(296-580), mFc-His Tagged protein ELISA**

0.2 µg of Human Mesothelin(296-580), mFc-His Tagged protein per well



ELISA plate pre-coated by 2 µg/mL (100 µL/well) Human Mesothelin Protein, mFc-His Tag (orb689392) can bind Anti-Mesothelin Neutralizing antibody (orb689326) in a linear range of 3.2-80.0 ng/ml.

**Biorbyt Ltd.**

7 Signet Court, Swann Road  
Cambridge  
CB5 8LA  
United Kingdom

Email: [info@biorbyt.com](mailto:info@biorbyt.com), [support@biorbyt.com](mailto:support@biorbyt.com)  
Phone: +44 (0)1223 859353 | Fax: +1 (415) 651-8558

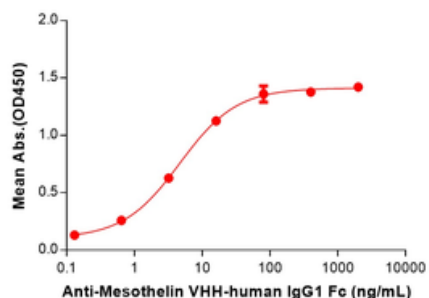
**Biorbyt LLC**

68 TW Alexander Drive  
Research Triangle Park  
Durham  
NC 27713  
United States

Email: [info@biorbyt.com](mailto:info@biorbyt.com), [support@biorbyt.com](mailto:support@biorbyt.com)  
Phone: +1 (415) 906-5211 | Fax: +1 (415) 651-8558

**Human Mesothelin (296-580), mFc-His Tagged protein ELISA**

0.2 µg of Human Mesothelin (296-580), mFc-His tagged protein per well



ELISA plate pre-coated by 2 µg/mL (100 µL/well) Human Mesothelin Protein, mFc-His Tag (orb689392) can bind Anti-Mesothelin VHH-human IgG1 Fc (orb1826923) in a linear range of 0.64–16 ng/ml.

**Biorbyt Ltd.**

7 Signet Court, Swann Road  
Cambridge  
CB5 8LA  
United Kingdom

Email: [info@biorbyt.com](mailto:info@biorbyt.com), [support@biorbyt.com](mailto:support@biorbyt.com)Phone: [+44 \(0\)1223 859353](tel:+44(0)1223859353) | Fax: [+1 \(415\) 651-8558](tel:+1(415)651-8558)**Biorbyt LLC**

68 TW Alexander Drive  
Research Triangle Park  
Durham  
NC 27713  
United States

Email: [info@biorbyt.com](mailto:info@biorbyt.com), [support@biorbyt.com](mailto:support@biorbyt.com)Phone: [+1 \(415\) 906-5211](tel:+1(415)906-5211) | Fax: [+1 \(415\) 651-8558](tel:+1(415)651-8558)