

## Product Datasheet

### GTF2H1 Antibody (orb684980)

|                             |   |
|-----------------------------|---|
| <b>Catalog Number</b>       | orb684980   |
| <b>Category</b>             | Antibodies  |
| <b>Description</b>          | This GTF2H1 Antibody is an unconjugated polyclonal product. It targets GTF2H1 using a synthesized peptide derived from N-terminal of Human TF2H1 as the immunogen. This antibody is suitable for ELISA, IHC, WB. Purification: The antibody was affinity-purified from rabbit antiserum by affinity-chromatography using epitope-specific immunogen.. |
| <b>Target</b>               | GTF2H1  |
| <b>Clonality</b>            | Polyclonal  |
| <b>Species/Host</b>         | Rabbit  |
| <b>Isotype</b>              | IgG   |
| <b>Conjugation</b>          | Unconjugated  |
| <b>Reactivity</b>           | Human, Mouse  |
| <b>Form/Appearance</b>      | liquid  |
| <b>Buffer/Preservatives</b> | Rabbit IgG in phosphate buffered saline (without Mg <sup>2+</sup> and Ca <sup>2+</sup> ), pH 7.4, 150mM NaCl, 0.02% sodium azide and 50% glycerol.  |
| <b>Purification</b>         | The antibody was affinity-purified from rabbit antiserum by affinity-chromatography using epitope-specific immunogen.   |
| <b>Immunogen</b>            | Synthesized peptide derived from N-terminal of Human TF2H1.   |
| <b>UniProt ID</b>           | <b>P32780</b>   |
| <b>Tested applications</b>  | ELISA, IHC, WB  |

**Biorbyt Ltd.**

7 Signet Court, Swann Road  
Cambridge  
CB5 8LA  
United Kingdom

Email: [info@biorbyt.com](mailto:info@biorbyt.com), [support@biorbyt.com](mailto:support@biorbyt.com)

Phone: [+44 \(0\)1223 859353](tel:+44(0)1223859353) | Fax: [+1 \(415\) 651-8558](tel:+1(415)651-8558)

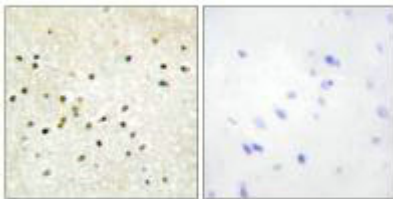
**Biorbyt LLC**

68 TW Alexander Drive  
Research Triangle Park  
Durham  
NC 27713  
United States

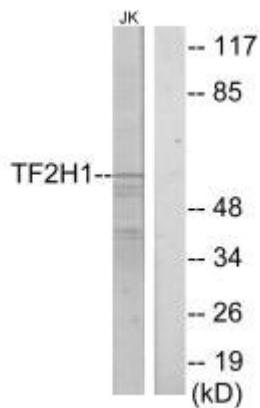
Email: [info@biorbyt.com](mailto:info@biorbyt.com), [support@biorbyt.com](mailto:support@biorbyt.com)

Phone: [+1 \(415\) 906-5211](tel:+1(415)906-5211) | Fax: [+1 \(415\) 651-8558](tel:+1(415)651-8558)

|                        |   |
|------------------------|---|
| <b>Dilution range</b>  | WB: 1: 500-1: 3000, IHC-P: 1: 50-1: 100   |
| <b>Storage</b>         | Maintain refrigerated at 2-8°C for up to 2 weeks. For long term storage store at -20°C in small aliquots to prevent freeze-thaw cycles. |
| <b>Note</b>            | For research use only   |
| <b>Expiration Date</b> | 12 months from date of receipt.   |



Immunohistochemical staining of Human brain tissue using GTF2H1 antibody



Western blot analysis of Jurkat cells using GTF2H1 antibody

**Biorbyt Ltd.**

7 Signet Court, Swann Road  
Cambridge  
CB5 8LA  
United Kingdom

Email: [info@biorbyt.com](mailto:info@biorbyt.com), [support@biorbyt.com](mailto:support@biorbyt.com)

Phone: [+44 \(0\)1223 859353](tel:+44(0)1223859353) | Fax: [+1 \(415\) 651-8558](tel:+1(415)651-8558)

**Biorbyt LLC**

68 TW Alexander Drive  
Research Triangle Park  
Durham  
NC 27713  
United States

Email: [info@biorbyt.com](mailto:info@biorbyt.com), [support@biorbyt.com](mailto:support@biorbyt.com)

Phone: [+1 \(415\) 906-5211](tel:+1(415)906-5211) | Fax: [+1 \(415\) 651-8558](tel:+1(415)651-8558)