

Product Datasheet

TLR4 Antibody (orb67563)

Catalog Number	orb67563
Category	Antibodies
Description	Rabbit Anti-Human TLR4 Polyclonal
Target	TLR4
Clonality	Polyclonal
Species/Host	Rabbit
Conjugation	Unconjugated
Reactivity	Human, Mouse
Concentration	1 mg/ml
Buffer/Preservatives	PBS, 50% glycerol, 0.09% sodium azide. Storage buffer changes when conjugated.
Purification	Protein A Purified
Immunogen	Developed against a synthetic peptide corresponding to amino acids 420-435 of human TLR4
UniProt ID	000206
MW	75-80kDa
Tested applications	FACS, FC, ICC, IF, IHC, WB
Dilution range	WB (1:500), IHC-P (1:50)

Biorbyt Ltd.

7 Signet Court, Swann Road
Cambridge
CB5 8LA
United Kingdom

Email: info@biorbyt.com, support@biorbyt.com

Phone: [+44 \(0\)1223 859353](tel:+44(0)1223859353) | Fax: [+1 \(415\) 651-8558](tel:+1(415)651-8558)

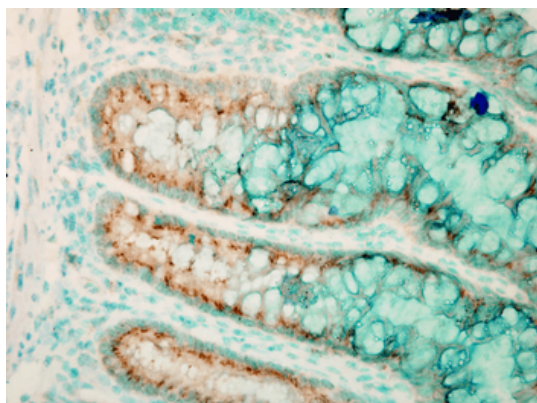
Biorbyt LLC

68 TW Alexander Drive
Research Triangle Park
Durham
NC 27713
United States

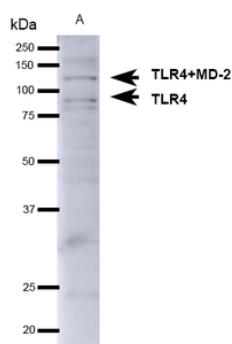
Email: info@biorbyt.com, support@biorbyt.com

Phone: [+1 \(415\) 906-5211](tel:+1(415)906-5211) | Fax: [+1 \(415\) 651-8558](tel:+1(415)651-8558)

Application notes	2 µg/ml was sufficient for detection of TLR4 in 100 ng of partial recombinant mouse TLR4 protein by colorimetric immunoblot analysis using Goat anti-rabbit IgG:HRP as the secondary antibody.
Specificity	Detects ~75-80kDa when tested against partial recombinant mouse TLR4 (extra-cellular portion plus His-tag).
Storage	Maintain refrigerated at 2-8°C for up to 2 weeks. For long term storage store at -20°C in small aliquots to prevent freeze-thaw cycles.
Note	For research use only
Entrez	7099
NCBI	NP_612564.1
Expiration Date	12 months from date of receipt.



Immunohistochemistry analysis using Rabbit Anti-TLR4 Polyclonal Antibody. Tissue: colon colitis. Species: Mouse. Fixation: Formalin. Primary Antibody: Rabbit Anti-TLR4 Polyclonal Antibody at 1:100000 for 12 hours at 4°C. Secondary Antibody: Biotin Goat Anti-Rabbit at 1:2000 for 1 hour at RT. Counterstain: Methyl Green at 200uL for 2 min at RT. Localization: Inflammatory cells.



Western blot analysis of Mouse brain showing detection of ~75-80kDa TLR4 protein using Rabbit Anti-TLR4 Polyclonal Antibody. Lane 1: Molecular Weight Ladder. Lane 2: Mouse Brain. Load: 15 µg. Block: 5% Skim Milk in 1X TBST. Primary Antibody: Rabbit Anti-TLR4 Polyclonal Antibody at 1:1000 for 1 hour at RT. Secondary Antibody: Goat Anti-Rabbit IgG: HRP at 1:4000 for 1 hour at RT. Predicted/Observed Size: ~75-80kDa. Other Band (s): ~130kDa (TLR4+MD-2).

Biorbyt Ltd.

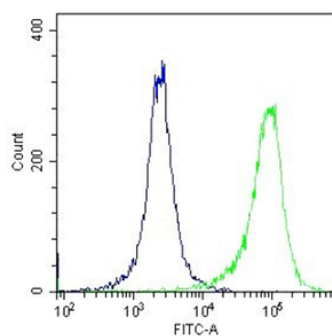
7 Signet Court, Swann Road
Cambridge
CB5 8LA
United Kingdom

Email: info@biorbyt.com, support@biorbyt.com
Phone: +44 (0)1223 859353 | Fax: +1 (415) 651-8558

Biorbyt LLC

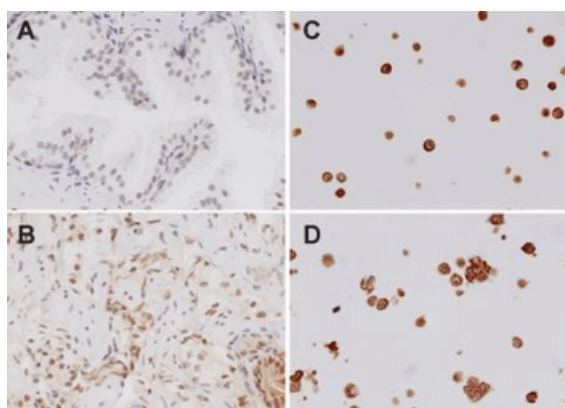
68 TW Alexander Drive
Research Triangle Park
Durham
NC 27713
United States

Email: info@biorbyt.com, support@biorbyt.com
Phone: +1 (415) 906-5211 | Fax: +1 (415) 651-8558

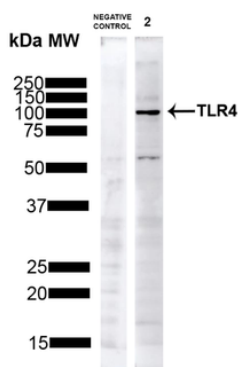


Antibody : TLR4 (green)
Isotype control : Rabbit IgG (blue)

Flow Cytometry analysis using Rabbit Anti-TLR4 Polyclonal Antibody. Tissue: Monocytic Leukemia cells (THP-1). Species: Human. Fixation: 2% Formaldehyde for 10 min at RT. Primary Antibody: Rabbit Anti-TLR4 Polyclonal Antibody at 2 μ g/10⁶ cells for 60 min at 37°C. Secondary Antibody: Goat Anti-Rabbit Dylight 488 at 1:200 for 40 min at 37°C.



Immunohistochemistry analysis using Rabbit Anti-TLR4 Polyclonal Antibody. Tissue: spleen tissue. Species: Mouse. Primary Antibody: Rabbit Anti-TLR4 Polyclonal Antibody at 1:100.



Western blot analysis of Human HeLa showing detection of ~75-80kDa TLR4 protein using Rabbit Anti-TLR4 Polyclonal Antibody. Lane 1: Molecular Weight Ladder. Lane 2: Human HeLa. Load: 10 μ g. Block: 5% Skim Milk in 1X TBST. Primary Antibody: Rabbit Anti-TLR4 Polyclonal Antibody at 1:1000 for 1 hour at RT. Secondary Antibody: Goat Anti-Rabbit IgG: HRP at 1:4000 for 1 hour at RT. Predicted/Observed Size: ~75-80kDa. Other Band (s): ~60kDa (observed degradation bands (PMID: 16885150)).

Biorbyt Ltd.

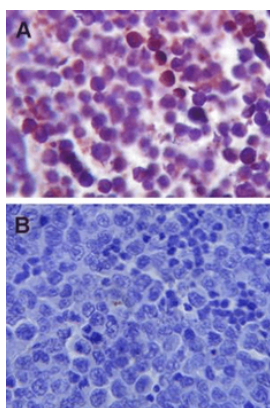
7 Signet Court, Swann Road
Cambridge
CB5 8LA
United Kingdom

Email: info@biorbyt.com, support@biorbyt.com
Phone: +44 (0)1223 859353 | Fax: +1 (415) 651-8558

Biorbyt LLC

68 TW Alexander Drive
Research Triangle Park
Durham
NC 27713
United States

Email: info@biorbyt.com, support@biorbyt.com
Phone: +1 (415) 906-5211 | Fax: +1 (415) 651-8558



Immunohistochemistry analysis using Rabbit Anti-TLR4 Polyclonal Antibody. Tissue: Spleen tissue. Species: Mouse. Primary Antibody: Rabbit Anti-TLR4 Polyclonal Antibody at 1:100.

Biorbyt Ltd.

7 Signet Court, Swann Road
Cambridge
CB5 8LA
United Kingdom

Email: info@biorbyt.com, support@biorbyt.com

Phone: [+44 \(0\)1223 859353](tel:+44(0)1223859353) | Fax: [+1 \(415\) 651-8558](tel:+1(415)651-8558)

Biorbyt LLC

68 TW Alexander Drive
Research Triangle Park
Durham
NC 27713
United States

Email: info@biorbyt.com, support@biorbyt.com

Phone: [+1 \(415\) 906-5211](tel:+1(415)906-5211) | Fax: [+1 \(415\) 651-8558](tel:+1(415)651-8558)