

Product Datasheet

BHLHE40 (C) Antibody, Rabbit Polyclonal (orb67046)

Catalog Number	orb67046
Category	Antibodies
Description	Rabbit polyclonal to BHLHE40. BHLHE40 is a basic helix-loop-helix protein expressed in various tissues and is induced by Bt2cAMP in chondrocytes. BHLHE40 is believed to be involved in the control of cell differentiation. It may function as a transcriptional factor to modulate chondrogenesis and neuronal differentiation. BHLHE40 interacts with ubiquitin-conjugating enzyme UBE2I/UBC9, which may lead to proteasomal degradation.
Clonality	Polyclonal
Species/Host	Rabbit
Conjugation	Unconjugated
Reactivity	Human, Mouse
Buffer/Preservatives	0.01% Na ₃
Purity	Affinity purification
Immunogen	C-terminal region of mouse BHLHE40
UniProt ID	O35185
MW	45
Tested applications	WB
Dilution range	WB:1:1000-1:5000

Biorbyt Ltd.

7 Signet Court, Swann Road
Cambridge
CB5 8LA
United Kingdom

Email: info@biorbyt.com, support@biorbyt.com

Phone: [+44 \(0\)1223 859353](tel:+44(0)1223859353) | Fax: [+1 \(415\) 651-8558](tel:+1(415)651-8558)

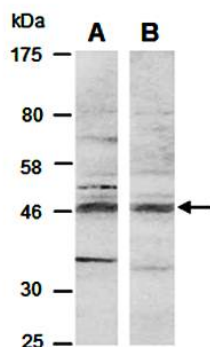
Biorbyt LLC

68 TW Alexander Drive
Research Triangle Park
Durham
NC 27713
United States

Email: info@biorbyt.com, support@biorbyt.com

Phone: [+1 \(415\) 906-5211](tel:+1(415)906-5211) | Fax: [+1 \(415\) 651-8558](tel:+1(415)651-8558)

- Storage** Maintain refrigerated at 2-8°C for up to 2 weeks. For long term storage store at -20°C in small aliquots to prevent freeze-thaw cycles.
- Note** For research use only
- Expiration Date** 12 months from date of receipt.



Western blot analysis of total cell extracts from human MCF7 using BHLHE40 antibody

Biorbyt Ltd.

7 Signet Court, Swann Road
Cambridge
CB5 8LA
United Kingdom

Email: info@biorbyt.com, support@biorbyt.com
Phone: [+44 \(0\)1223 859353](tel:+44(0)1223859353) | Fax: [+1 \(415\) 651-8558](tel:+1(415)651-8558)

Biorbyt LLC

68 TW Alexander Drive
Research Triangle Park
Durham
NC 27713
United States

Email: info@biorbyt.com, support@biorbyt.com
Phone: [+1 \(415\) 906-5211](tel:+1(415)906-5211) | Fax: [+1 \(415\) 651-8558](tel:+1(415)651-8558)