

## Product Datasheet

### **KLRG1 (M) Antibody, Rabbit Polyclonal (orb67024)**

<b>Catalog Number</b>	orb67024
<b>Category</b>	Antibodies
<b>Description</b>	Rabbit polyclonal to KLRG1. Killer cell lectin-like receptor subfamily G member 1 (KLRG1) is a single-pass type II cell membrane protein that is expressed specifically on natural killer (NK) cells and activated CD8 T-cells and is induced by pathogens and viral infections. KLRG1 forms monomer and disulfide-linked homodimer. KLRG1 plays an inhibitory role on natural killer (NK) cells and T-cell functions upon binding to their non-MHC ligands. KLRG1 may mediate missing self recognition by binding to a highly conserved site on classical cadherins, enabling it to monitor expression of E-cadherin/CDH1, N-cadherin/CDH2 and R-cadherin/CDH4 on target cells.
<b>Clonality</b>	Polyclonal
<b>Species/Host</b>	Rabbit
<b>Conjugation</b>	Unconjugated
<b>Reactivity</b>	Human, Mouse
<b>Buffer/Preservatives</b>	0.01% NaN <sub>3</sub>
<b>Purity</b>	Affinity purification
<b>Immunogen</b>	middle region of mouse KLRG1
<b>UniProt ID</b>	<b>O88713</b>
<b>MW</b>	21
<b>Tested applications</b>	WB
<b>Dilution range</b>	WB:1:1000-1:5000

**Biorbyt Ltd.**

7 Signet Court, Swann Road  
Cambridge  
CB5 8LA  
United Kingdom

Email: [info@biorbyt.com](mailto:info@biorbyt.com), [support@biorbyt.com](mailto:support@biorbyt.com)

Phone: [+44 \(0\)1223 859353](tel:+44(0)1223859353) | Fax: [+1 \(415\) 651-8558](tel:+1(415)651-8558)

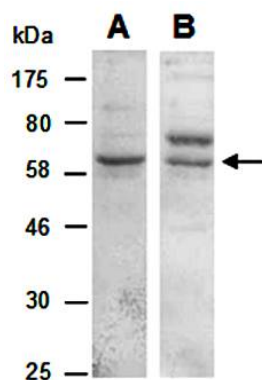
**Biorbyt LLC**

68 TW Alexander Drive  
Research Triangle Park  
Durham  
NC 27713  
United States

Email: [info@biorbyt.com](mailto:info@biorbyt.com), [support@biorbyt.com](mailto:support@biorbyt.com)

Phone: [+1 \(415\) 906-5211](tel:+1(415)906-5211) | Fax: [+1 \(415\) 651-8558](tel:+1(415)651-8558)

<b>Storage</b>	Maintain refrigerated at 2-8°C for up to 2 weeks. For long term storage store at -20°C in small aliquots to prevent freeze-thaw cycles.
<b>Note</b>	For research use only
<b>Expiration Date</b>	12 months from date of receipt.



Western blot analysis of total cell extracts from human Jurkat using KLRG1 antibody

**Biorbyt Ltd.**

7 Signet Court, Swann Road  
Cambridge  
CB5 8LA  
United Kingdom

Email: [info@biorbyt.com](mailto:info@biorbyt.com), [support@biorbyt.com](mailto:support@biorbyt.com)

Phone: [+44 \(0\)1223 859353](tel:+44(0)1223859353) | Fax: [+1 \(415\) 651-8558](tel:+1(415)651-8558)

**Biorbyt LLC**

68 TW Alexander Drive  
Research Triangle Park  
Durham  
NC 27713  
United States

Email: [info@biorbyt.com](mailto:info@biorbyt.com), [support@biorbyt.com](mailto:support@biorbyt.com)

Phone: [+1 \(415\) 906-5211](tel:+1(415)906-5211) | Fax: [+1 \(415\) 651-8558](tel:+1(415)651-8558)