

Product Datasheet

SUCLG1 Rabbit Polyclonal Antibody (orb668306)

Catalog Number	orb668306
Category	Antibodies
Description	The SUCLG1 Antibody is suitable for IF, WB. It is a Polyclonal, Unconjugated antibody which raised against Recombinant fusion protein of human SUCLG1. The exact sequence is proprietary. Purification: The antibody was purified by immunogen affinity chromatography.
Target	SUCLG1
Clonality	Polyclonal
Species/Host	Rabbit
Conjugation	Unconjugated
Reactivity	Human, Mouse, Rat
Form/Appearance	Liquid
Buffer/Preservatives	0.42% Potassium phosphate, 0.87% Sodium chloride, pH 7.3, 30% glycerol, and 0.01% sodium azide.
Purification	The antibody was purified by immunogen affinity chromatography.
Immunogen	Recombinant fusion protein of human SUCLG1. The exact sequence is proprietary.
UniProt ID	P53597, P13086, Q9WUM5
Tested applications	IF, WB
Dilution range	WB: 1-500-2000

Biorbyt Ltd.

7 Signet Court, Swann Road
Cambridge
CB5 8LA
United Kingdom

Email: info@biorbyt.com, support@biorbyt.com

Phone: [+44 \(0\)1223 859353](tel:+44(0)1223859353) | Fax: [+1 \(415\) 651-8558](tel:+1(415)651-8558)

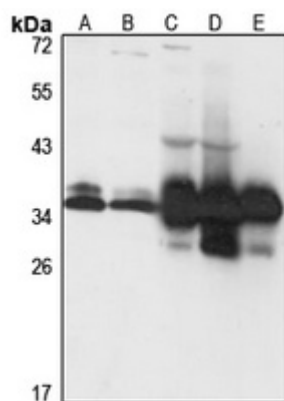
Biorbyt LLC

68 TW Alexander Drive
Research Triangle Park
Durham
NC 27713
United States

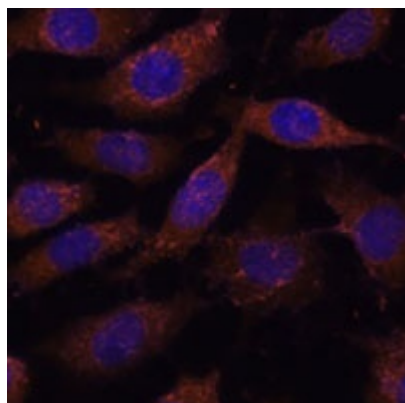
Email: info@biorbyt.com, support@biorbyt.com

Phone: [+1 \(415\) 906-5211](tel:+1(415)906-5211) | Fax: [+1 \(415\) 651-8558](tel:+1(415)651-8558)

Specificity	Recognizes endogenous levels of SUCLG1 protein
Antibody Type	Primary Antibody
Storage	Maintain refrigerated at 2-8°C for up to 2 weeks. For long term storage store at -20°C in small aliquots to prevent freeze-thaw cycles.
Note	For research use only
Entrez	114597, 8802, 56451
Expiration Date	12 months from date of receipt.



Western blot analysis of SUCLG1 expression in HepG2 (A), A549 (B), mouse heart (C), mouse kidney (D), rat liver (E) whole cell lysates. (Predicted band size: 36 kD; Observed band size: 26-36 kD)



Immunofluorescent analysis of SUCLG1 staining in L929 cells. Formalin-fixed cells were permeabilized with 0.1% Triton X-100 in TBS for 5-10 minutes and blocked with 3% BSA-PBS for 30 minutes at room temperature. Cells were probed with the primary antibody in 3% BSA-PBS and incubated overnight at 4 °C in a humidified chamber. Cells were washed with PBST and incubated with a AF594-conjugated secondary antibody (red) in PBS at room temperature in the dark. DAPI was used to stain the cell nuclei (blue).

Biorbyt Ltd.

7 Signet Court, Swann Road
Cambridge
CB5 8LA
United Kingdom

Email: info@biorbyt.com, support@biorbyt.com

Phone: [+44 \(0\)1223 859353](tel:+44(0)1223859353) | Fax: [+1 \(415\) 651-8558](tel:+1(415)651-8558)

Biorbyt LLC

68 TW Alexander Drive
Research Triangle Park
Durham
NC 27713
United States

Email: info@biorbyt.com, support@biorbyt.com

Phone: [+1 \(415\) 906-5211](tel:+1(415)906-5211) | Fax: [+1 \(415\) 651-8558](tel:+1(415)651-8558)