

Product Datasheet

RBBP6 (N) Antibody, Rabbit Polyclonal (orb66762)

Catalog Number	orb66762
Category	Antibodies
Description	Rabbit polyclonal to RBBP6. Retinoblastoma binding protein 6 (RBBP6) is an E3 ubiquitin-protein ligase that promotes ubiquitination of YBX1, leading to its degradation by the proteasome. It binds to underphosphorylated but not phosphorylated retinoblastoma tumor suppressor.
Clonality	Polyclonal
Species/Host	Rabbit
Conjugation	Unconjugated
Reactivity	Human
Buffer/Preservatives	0.01% NaN ₃
Purity	Affinity purification
Immunogen	N-terminal region of human RBBP6
UniProt ID	Q7Z6E9
MW	202
Tested applications	WB
Dilution range	WB:1:1000-1:5000
Storage	Maintain refrigerated at 2-8°C for up to 2 weeks. For long term storage store at -20°C in small aliquots to prevent freeze-thaw cycles.
Note	For research use only

Biorbyt Ltd.

7 Signet Court, Swann Road
Cambridge
CB5 8LA
United Kingdom

Email: info@biorbyt.com, support@biorbyt.com

Phone: [+44 \(0\)1223 859353](tel:+44(0)1223859353) | Fax: [+1 \(415\) 651-8558](tel:+1(415)651-8558)

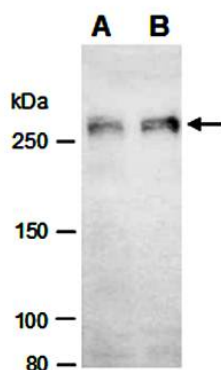
Biorbyt LLC

68 TW Alexander Drive
Research Triangle Park
Durham
NC 27713
United States

Email: info@biorbyt.com, support@biorbyt.com

Phone: [+1 \(415\) 906-5211](tel:+1(415)906-5211) | Fax: [+1 \(415\) 651-8558](tel:+1(415)651-8558)

Expiration Date 12 months from date of receipt.



Western blot analysis of total cell extracts from human 293T(Lane1) and human Hela(Lane2) using RBBP6 antibody

Biorbyt Ltd.

7 Signet Court, Swann Road
Cambridge
CB5 8LA
United Kingdom

Email: info@biorbyt.com, support@biorbyt.com
Phone: [+44 \(0\)1223 859353](tel:+44(0)1223859353) | Fax: [+1 \(415\) 651-8558](tel:+1(415)651-8558)

Biorbyt LLC

68 TW Alexander Drive
Research Triangle Park
Durham
NC 27713
United States

Email: info@biorbyt.com, support@biorbyt.com
Phone: [+1 \(415\) 906-5211](tel:+1(415)906-5211) | Fax: [+1 \(415\) 651-8558](tel:+1(415)651-8558)