

Product Datasheet

mCherry Mouse Monoclonal Antibody (orb66657)

| | |
|----------------------------|---|
| Catalog Number | orb66657 |
| Category | Antibodies |
| Description | mCherry Mouse Monoclonal Antibody |
| Target | mCherry |
| Clonality | Monoclonal |
| Species/Host | Mouse |
| Isotype | Mouse IgG1 |
| Conjugation | Unconjugated |
| Form/Appearance | 10 mM PBS, 0.02% sodium azide |
| Concentration | - 100 µg (in 200 µl): 0.5 mg/ml- 200 µg (in 400 µl): 0.5 mg/ml |
| Purity | Monoclonal antibodies are purified by peptide affinity chromatography |
| Immunogen | Human mCherry recombinant protein (orb178365) was used as immunogen. |
| MW | 34 kDa |
| Tested applications | ELISA, IHC-P, WB |
| Dilution range | WB: 1 µg/ml |
| Clone Number | 5A12A7H10 |
| Storage | Maintain refrigerated at 2-8°C for up to 2 weeks. For long term storage store at -20°C in small aliquots to prevent freeze-thaw cycles. |

Biorbyt Ltd.

7 Signet Court, Swann Road
Cambridge
CB5 8LA
United Kingdom

Email: info@biorbyt.com, support@biorbyt.com
Phone: [+44 \(0\)1223 859353](tel:+44(0)1223859353) | Fax: [+1 \(415\) 651-8558](tel:+1(415)651-8558)

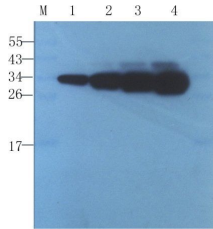
Biorbyt LLC

68 TW Alexander Drive
Research Triangle Park
Durham
NC 27713
United States

Email: info@biorbyt.com, support@biorbyt.com
Phone: [+1 \(415\) 906-5211](tel:+1(415)906-5211) | Fax: [+1 \(415\) 651-8558](tel:+1(415)651-8558)

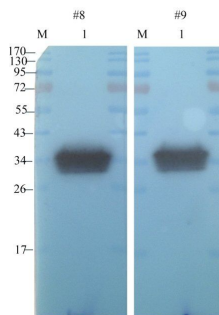
Note For research use only

Expiration Date 12 months from date of receipt.



lane 1: mCherry protein 20ng
lane 2: mCherry protein 50ng
lane 3: mCherry protein 100ng
lane 4: mCherry protein 200ng

WB analysis of protein 20 ng (lane 1), protein 50 ng (lane 2), protein 100 ng (lane3), protein 200 ng (lane 4) Recombinant protein using mCherry antibody (1 ug/ml)



lane 1: recombinant mCherry protein

Western blot analysis of mcherry protein (lane 1) Recombinant protein using anti-mCherry (1 ug/ml)

Biorbyt Ltd.

7 Signet Court, Swann Road
Cambridge
CB5 8LA
United Kingdom

Email: info@biorbyt.com, support@biorbyt.com

Phone: [+44 \(0\)1223 859353](tel:+44(0)1223859353) | Fax: [+1 \(415\) 651-8558](tel:+1(415)651-8558)

Biorbyt LLC

68 TW Alexander Drive
Research Triangle Park
Durham
NC 27713
United States

Email: info@biorbyt.com, support@biorbyt.com

Phone: [+1 \(415\) 906-5211](tel:+1(415)906-5211) | Fax: [+1 \(415\) 651-8558](tel:+1(415)651-8558)