

Product Datasheet

Human Angiotensin-converting enzyme 2 protein (orb640280)

Catalog Number	orb640280
Category	Proteins
Description	This Human Angiotensin-converting enzyme 2 protein spans the amino acid sequence from region 18-740aa. Purity: Greater than 85% as determined by SDS-PAGE.
Tag	C-terminal hFc1-tagged
Form/Appearance	Lyophilized powder
Buffer/Preservatives	Lyophilized from a 0.2 µm sterile filtered PBS, 6% Trehalose, pH 7.4
Purity	Greater than 85% as determined by SDS-PAGE.
Protein Sequence	QSTIEEQAKTFLDKFNHEAEDLFYQSSLASWNYNTNITEENVQNMNAGDKWSAFLKEQS TLAQMYPLQEIQNLTVKLQLQALQQNGSSVLSEDKSKRLNTILNTMSTIYSTGKVCNPDNPQ ECLLLEPGLNEIMANSLDYNERLWAWESWRSEVGKQLRPLYEEYVVLKNEMARANHYEDY GDYWRGDYEVNGVDGYDYSRGQLIEDVEHTFEEIKPLYEHLHAYVRAKLMNAYPSYISPIGC LPAHLLGDMWGRFWTNLYSLTVPFGQKPNIDVTDAMVDQAWDAQRIFKEAEKFFVSVGLP NMTQGFWENSMLTDPGNVQKAVCHPTAWDLGKGDFRILMCTKVTMDDFLTAHHEMGHI QYDMAYAAQPFLLRNGANEGFHEAVGEIMSLSAATPKHLKSIGLLSPDFQEDNETEINFLK QALTIVGTLPFTYMLEKWRWMVFKGEIPKDQWMKKWWEMKREIVGVVEPVPHDETYCDP ASLFHVSNDYSFIRYYTRTLYQFQFQEALCQAAKHEGPLHKCDISNSTEAGQKLFNMLRLGK SEPWTLALENVVGAKNMNVRPLLNYFEPLFTWLKDQNKNSFVGWSTDWSPYADQSIKVRI SLKSALGDKAYEWNENMYLFRSSVAYAMRQYFLKVKNQMILFGEEDVRVANLKPRISFNF FVTAPKNVSDIIPRTEVEKAIRMSRSRINDAFRLNDNSLEFLGIQPTLGPPNQPPVS
Protein Length	Partial
UniProt ID	Q9BYF1

Biorbyt Ltd.

7 Signet Court, Swann Road
Cambridge
CB5 8LA
United Kingdom

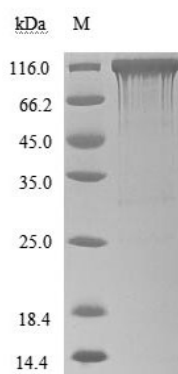
Email: info@biorbyt.com, support@biorbyt.com
Phone: [+44 \(0\)1223 859353](tel:+44(0)1223859353) | Fax: [+1 \(415\) 651-8558](tel:+1(415)651-8558)

Biorbyt LLC

68 TW Alexander Drive
Research Triangle Park
Durham
NC 27713
United States

Email: info@biorbyt.com, support@biorbyt.com
Phone: [+1 \(415\) 906-5211](tel:+1(415)906-5211) | Fax: [+1 \(415\) 651-8558](tel:+1(415)651-8558)

MW	112.5 kDa
Application notes	We recommend that this vial be briefly centrifuged prior to opening to bring the contents to the bottom. Please reconstitute protein in deionized sterile water to a concentration of 0.1-1.0 mg/mL. We recommend to add 5-50% of glycerol (final concentration) and aliquot for long-term storage at -20°C/-80°C. Our default final concentration of glycerol is 50%. Customers could use it as reference.
Endotoxins	Less than 1.0 EU/μg as determined by LAL method.
Source	Mammalian cell
Biological Origin	Homo sapiens (Human)
Expression Region	18-740aa
Storage	The shelf life is related to many factors, storage state, buffer ingredients, storage temperature and the stability of the protein itself. Generally, the shelf life of liquid form is 6 months at -20°C/-80°C. The shelf life of lyophilized form is 12 months at -20°C/-80°C.
Note	For research use only
Expiration Date	6 months from date of receipt.



(Tris-Glycine gel) Discontinuous SDS-PAGE (reduced) with 5% enrichment gel and 15% separation gel.

Biorbyt Ltd.

7 Signet Court, Swann Road
Cambridge
CB5 8LA
United Kingdom

Email: info@biorbyt.com, support@biorbyt.com

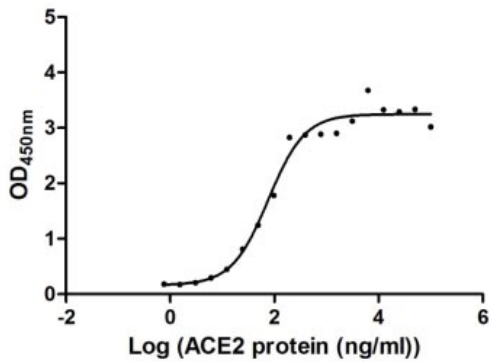
Phone: [+44 \(0\)1223 859353](tel:+44(0)1223859353) | Fax: [+1 \(415\) 651-8558](tel:+1(415)651-8558)

Biorbyt LLC

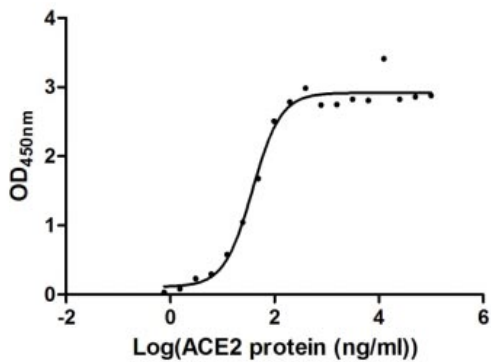
68 TW Alexander Drive
Research Triangle Park
Durham
NC 27713
United States

Email: info@biorbyt.com, support@biorbyt.com

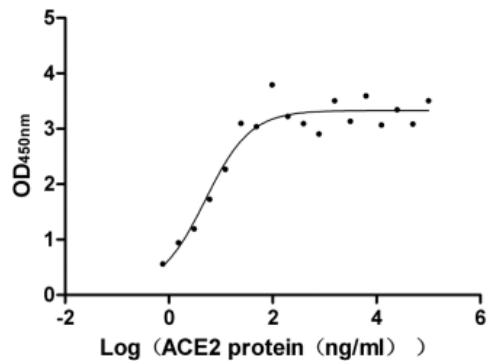
Phone: [+1 \(415\) 906-5211](tel:+1(415)906-5211) | Fax: [+1 \(415\) 651-8558](tel:+1(415)651-8558)



Measured by its binding ability in a functional ELISA. Immobilized SARS-CoV-2-S at 2 µg/ml can bind human ACE2, the EC50 of SARS-CoV-2-S protein is 56.64 - 103.6 ng/ml.



Measured by its binding ability in a functional ELISA. Immobilized SARS-CoV-2-S1-RBD at 5 µg/ml can bind human ACE2, the EC50 of human ACE2 protein is 31.80 - 44.69 ng/ml.



Measured by its binding ability in a functional ELISA. Immobilized SARS-CoV-2-S1-RBD at 5 µg/ml can bind human ACE2, the EC50 is 2.785-9.139 ng/ml.

Biorbyt Ltd.

7 Signet Court, Swann Road
Cambridge
CB5 8LA
United Kingdom

Email: info@biorbyt.com, support@biorbyt.com

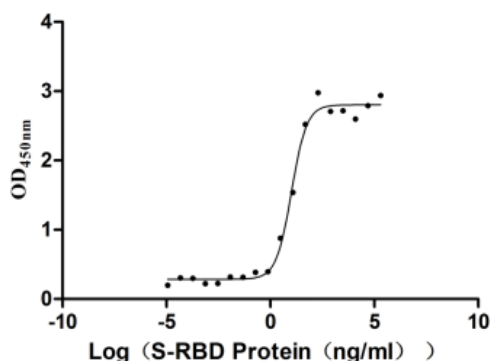
Phone: +44 (0)1223 859353 | Fax: +1 (415) 651-8558

Biorbyt LLC

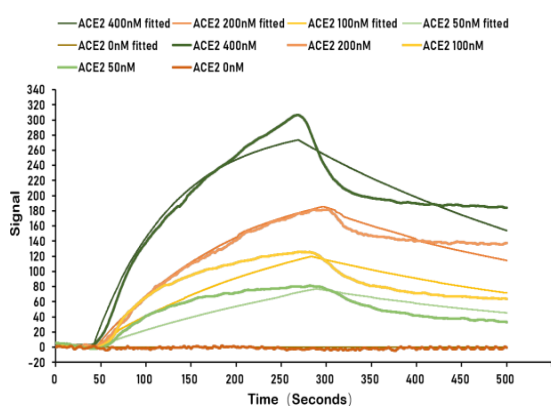
68 TW Alexander Drive
Research Triangle Park
Durham
NC 27713
United States

Email: info@biorbyt.com, support@biorbyt.com

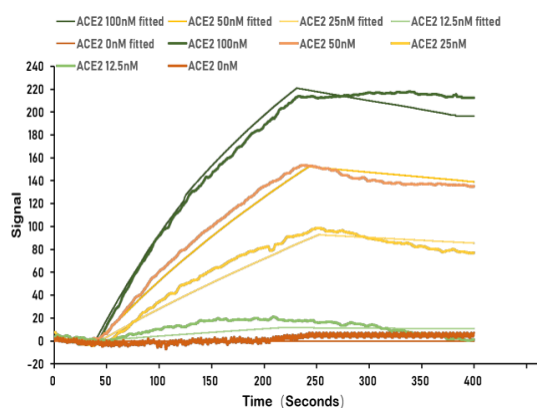
Phone: +1 (415) 906-5211 | Fax: +1 (415) 651-8558



Measured by its binding ability in a functional ELISA. Immobilized human ACE2 at 2 µg/ml can bind SARS-CoV-2-S1-RBD, the EC50 of human ACE2 protein is 8.363-12.82 ng/ml.



SARS-CoV-2 Spike protein RBD his/sumostar tag captured on COOH chip can bind Human ACE2 protein Fc tag with an affinity constant of 100 nM as detected by LSPR Assay.



SARS-CoV-2 Spike protein RBD his/myc tag captured on COOH chip can bind Human ACE2 protein Fc tag with an affinity constant of 13.8 nM as detected by LSPR Assay.

Biorbyt Ltd.

7 Signet Court, Swann Road
Cambridge
CB5 8LA
United Kingdom

Email: info@biorbyt.com, support@biorbyt.com
Phone: +44 (0)1223 859353 | Fax: +1 (415) 651-8558

Biorbyt LLC

68 TW Alexander Drive
Research Triangle Park
Durham
NC 27713
United States

Email: info@biorbyt.com, support@biorbyt.com
Phone: +1 (415) 906-5211 | Fax: +1 (415) 651-8558