

## Product Datasheet

### POLM Rabbit Polyclonal Antibody (orb630072)

|                            |                                    |
|----------------------------|------------------------------------|
| <b>Catalog Number</b>      | orb630072                          |
| <b>Category</b>            | Antibodies                         |
| <b>Description</b>         | Rabbit polyclonal antibody to POLM |
| <b>Target</b>              | POLM                               |
| <b>Clonality</b>           | Polyclonal                         |
| <b>Species/Host</b>        | Rabbit                             |
| <b>Isotype</b>             | IgG                                |
| <b>Conjugation</b>         | Unconjugated                       |
| <b>Reactivity</b>          | Human                              |
| <b>Form/Appearance</b>     | liquid                             |
| <b>Purity</b>              | ≥95% as determined by SDS-PAGE     |
| <b>Purification</b>        | Immunogen affinity purified        |
| <b>Immunogen</b>           | polymerase(DNA directed), mu       |
| <b>UniProt ID</b>          | <b>Q9NP87</b>                      |
| <b>Tested applications</b> | ELISA, IHC, WB                     |
| <b>Dilution range</b>      | WB: 1:500-1:2000; IHC: 1:20-1:200  |
| <b>Antibody Type</b>       | Primary Antibody                   |

**Biorbyt Ltd.**

7 Signet Court, Swann Road  
Cambridge  
CB5 8LA  
United Kingdom

Email: [info@biorbyt.com](mailto:info@biorbyt.com), [support@biorbyt.com](mailto:support@biorbyt.com)

Phone: [+44 \(0\)1223 859353](tel:+44(0)1223859353) | Fax: [+1 \(415\) 651-8558](tel:+1(415)651-8558)

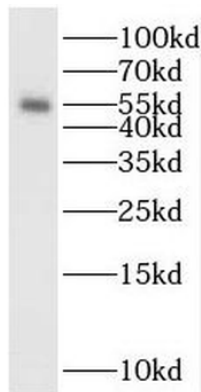
**Biorbyt LLC**

68 TW Alexander Drive  
Research Triangle Park  
Durham  
NC 27713  
United States

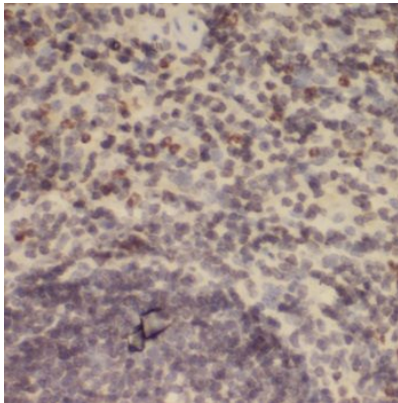
Email: [info@biorbyt.com](mailto:info@biorbyt.com), [support@biorbyt.com](mailto:support@biorbyt.com)

Phone: [+1 \(415\) 906-5211](tel:+1(415)906-5211) | Fax: [+1 \(415\) 651-8558](tel:+1(415)651-8558)

|                        |   |
|------------------------|---|
| <b>Storage</b>         | Maintain refrigerated at 2-8°C for up to 2 weeks. For long term storage store at -20°C in small aliquots to prevent freeze-thaw cycles. |
| <b>Note</b>            | For research use only   |
| <b>Expiration Date</b> | 12 months from date of receipt.   |



Jurkat cells were subjected to SDS PAGE followed by western blot with orb630072 (POLM antibody) at dilution of 1:800.



Immunohistochemistry of paraffin-embedded human spleen using orb630072 (POLM antibody) at dilution of 1:50.

**Biorbyt Ltd.**

7 Signet Court, Swann Road  
Cambridge  
CB5 8LA  
United Kingdom

Email: [info@biorbyt.com](mailto:info@biorbyt.com), [support@biorbyt.com](mailto:support@biorbyt.com)

Phone: [+44 \(0\)1223 859353](tel:+44(0)1223859353) | Fax: [+1 \(415\) 651-8558](tel:+1(415)651-8558)

**Biorbyt LLC**

68 TW Alexander Drive  
Research Triangle Park  
Durham  
NC 27713  
United States

Email: [info@biorbyt.com](mailto:info@biorbyt.com), [support@biorbyt.com](mailto:support@biorbyt.com)

Phone: [+1 \(415\) 906-5211](tel:+1(415)906-5211) | Fax: [+1 \(415\) 651-8558](tel:+1(415)651-8558)