

Product Datasheet

Human ACTB protein (orb603889)

Catalog Number	orb603889
Category	Proteins
Description	This Human ACTB protein spans the amino acid sequence from region 1-375aa. Purity: Greater than 85% as determined by SDS-PAGE.
Tag	N-terminal 10xHis-tagged and C-terminal Myc-tagged
Form/Appearance	Liquid or Lyophilized powder
Buffer/Preservatives	If the delivery form is liquid, the default storage buffer is Tris/PBS-based buffer, 5%-50% glycerol. If the delivery form is lyophilized powder, the buffer before lyophilization is Tris/PBS-based buffer, 6% Trehalose, pH 8.0.
Purity	Greater than 85% as determined by SDS-PAGE.
Protein Sequence	MDDDIAALVVDNGSGMCKAGFAGDDAPRAVFPISVGRPRHQGVMVGMGQKDSYVGDEA QSKRGILTLYPIEHGIVTNWDDMEKIWHHTFYNELRVAPPEHPVLLTEAPLNPKANREKMT QIMFETFNTPAMYVAIQAVLSLYASGRITGIVMDSGDGVTHTVPIYEGYALPHAILRLDLAGR DLTDYLMKILTERGYSFTTTAEREIVRDIKEKLCYVALDFEQEMATAASSSSLEKSYELPDGQ VITIGNERFRCPEALFQPSFLGMESCGIHETTFNSIMKCDVDIRKDLYANTVLSGGTTMYPGI ADRMQKEITALAPSTMKIKIIPPERKYSVWIGGSILASLSTFQQMWISKQEYDESGPSIVHRK CF
Protein Length	Full Length
UniProt ID	P60709
MW	49.2 kDa
Application notes	Full Length
Source	E.coli

Biorbyt Ltd.

7 Signet Court, Swann Road
Cambridge
CB5 8LA
United Kingdom

Email: info@biorbyt.com, support@biorbyt.com

Phone: [+44 \(0\)1223 859353](tel:+44(0)1223859353) | Fax: [+1 \(415\) 651-8558](tel:+1(415)651-8558)

Biorbyt LLC

68 TW Alexander Drive
Research Triangle Park
Durham
NC 27713
United States

Email: info@biorbyt.com, support@biorbyt.com

Phone: [+1 \(415\) 906-5211](tel:+1(415)906-5211) | Fax: [+1 \(415\) 651-8558](tel:+1(415)651-8558)

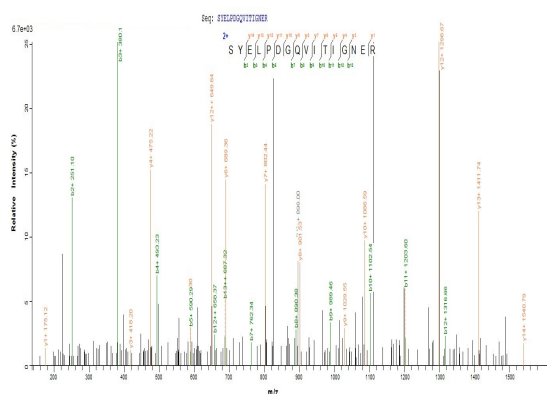
Biological Origin Homo sapiens (Human)

Expression Region 1-375aa

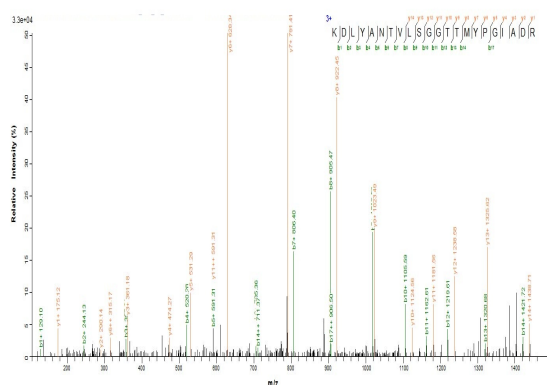
Storage The shelf life is related to many factors, storage state, buffer ingredients, storage temperature and the stability of the protein itself. Generally, the shelf life of liquid form is 6 months at -20°C/-80°C. The shelf life of lyophilized form is 12 months at -20°C/-80°C.

Note For research use only

Expiration Date 6 months from date of receipt.



Based on the SEQUEST from database of E.coli host and target protein, the LC-MS/MS Analysis result could indicate that this peptide derived from E.coli-expressed Homo sapiens (Human) ACTB.



Based on the SEQUEST from database of E.coli host and target protein, the LC-MS/MS Analysis result could indicate that this peptide derived from E.coli-expressed Homo sapiens (Human) ACTB.

Biorbyt Ltd.

7 Signet Court, Swann Road
Cambridge
CB5 8LA
United Kingdom

Email: info@biorbyt.com, support@biorbyt.com
Phone: +44 (0)1223 859353 | Fax: +1 (415) 651-8558

Biorbyt LLC

68 TW Alexander Drive
Research Triangle Park
Durham
NC 27713
United States

Email: info@biorbyt.com, support@biorbyt.com
Phone: +1 (415) 906-5211 | Fax: +1 (415) 651-8558