

## Product Datasheet

### MMP2 Rabbit Polyclonal Antibody (orb592823)

<b>Catalog Number</b>	orb592823
<b>Category</b>	Antibodies
<b>Description</b>	Rabbit polyclonal antibody to MMP2
<b>Target</b>	MMP2
<b>Clonality</b>	Polyclonal
<b>Species/Host</b>	Rabbit
<b>Conjugation</b>	Unconjugated
<b>Reactivity</b>	Human
<b>Predicted Reactivity</b>	Bovine, Canine, Equine, Guinea pig, Mouse, Rabbit, Rat, Sheep
<b>Form/Appearance</b>	Liquid. Purified antibody supplied in 1x PBS buffer with 0.09% (w/v) sodium azide and 2% sucrose.
<b>Concentration</b>	1.0 mg/ml
<b>Buffer/Preservatives</b>	Liquid. Purified antibody supplied in 1x PBS buffer with 0.09% (w/v) sodium azide and 2% sucrose.
<b>Purification</b>	Protein A purified
<b>Immunogen</b>	The immunogen is a synthetic peptide directed towards the C terminal region of human MMP2
<b>Protein Sequence</b>	Synthetic peptide located within the following region: AWNAIPDNLDAVVDLQGGGHSYFFKGYLLKLENQSLKSVKFGSIKSDWL
<b>UniProt ID</b>	<b>P08253</b>

**Biorbyt Ltd.**

7 Signet Court, Swann Road  
Cambridge  
CB5 8LA  
United Kingdom

Email: [info@biorbyt.com](mailto:info@biorbyt.com), [support@biorbyt.com](mailto:support@biorbyt.com)

Phone: [+44 \(0\)1223 859353](tel:+44(0)1223859353) | Fax: [+1 \(415\) 651-8558](tel:+1(415)651-8558)

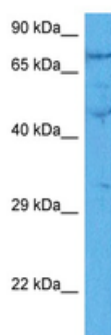
**Biorbyt LLC**

68 TW Alexander Drive  
Research Triangle Park  
Durham  
NC 27713  
United States

Email: [info@biorbyt.com](mailto:info@biorbyt.com), [support@biorbyt.com](mailto:support@biorbyt.com)

Phone: [+1 \(415\) 906-5211](tel:+1(415)906-5211) | Fax: [+1 \(415\) 651-8558](tel:+1(415)651-8558)

<b>MW</b>	74kDa
<b>Tested applications</b>	IHC, WB
<b>Storage</b>	Maintain refrigerated at 2-8°C for up to 2 weeks. For long term storage store at -20°C in small aliquots to prevent freeze-thaw cycles.
<b>Note</b>	For research use only
<b>NCBI</b>	<b>NP_004521</b>
<b>Expiration Date</b>	12 months from date of receipt.



Host: Rabbit  
Target Name: MMP2  
Sample Type: HCT116 Cell Lysate  
Antibody Dilution: 1.0µg/ml

Sample Tissue: Human HCT116 Whole Cell, Antibody Dilution: 1 ug/ml.



Host: Rabbit  
Target Name: MMP2  
Sample Type: Human Lung  
Antibody Dilution: 1ug/ml

Sample Type: Human Lung, Isoform 3: 66kDa, Isoform 2: 69kDa, Antibody Dilution: 1.0 ug/ml.

**Biorbyt Ltd.**

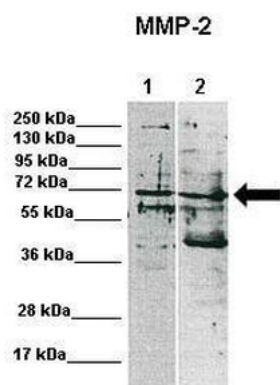
7 Signet Court, Swann Road  
Cambridge  
CB5 8LA  
United Kingdom

Email: [info@biorbyt.com](mailto:info@biorbyt.com), [support@biorbyt.com](mailto:support@biorbyt.com)  
Phone: [+44 \(0\)1223 859353](tel:+44(0)1223859353) | Fax: [+1 \(415\) 651-8558](tel:+1(415)651-8558)

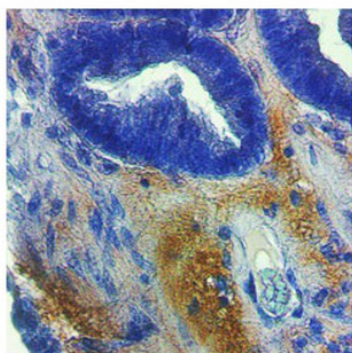
**Biorbyt LLC**

68 TW Alexander Drive  
Research Triangle Park  
Durham  
NC 27713  
United States

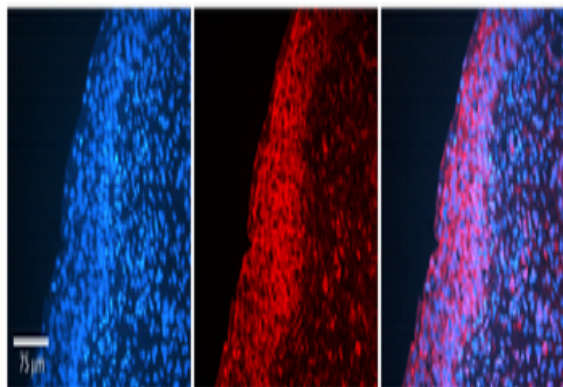
Email: [info@biorbyt.com](mailto:info@biorbyt.com), [support@biorbyt.com](mailto:support@biorbyt.com)  
Phone: [+1 \(415\) 906-5211](tel:+1(415)906-5211) | Fax: [+1 \(415\) 651-8558](tel:+1(415)651-8558)



Lanes: Lane 1: 15 ug MDA-MB-231 lysate, Lane 2: 15 ug MCF7 lysate, Primary Antibody Dilution: 1:1000, Secondary Antibody: Anti-rabbit-HRP, Secondary Antibody Dilution: 1:10000, Gene Name: MMP2.



MMP1 in connective tissue in ovarian carcinoma was detected using HRP/DAB brown color stain. Recommended for IHC on human tissue. Working dilution 2-10 ug/ml.



Rabbit Anti-MMP2 Antibody, Catalog Number: orb592823, Formalin Fixed Paraffin Embedded Tissue: Human Urinary Bladder Tissue, Observed Staining: Cytoplasm, Primary Antibody Concentration: 1:100, Other Working Concentrations: N/A, Secondary Antibody: Donkey anti-Rabbit-Cy3, Secondary Antibody Concentration: 1:200, Magnification: 20X, Exposure Time: 0.5-2.0 sec.

**Biorbyt Ltd.**

7 Signet Court, Swann Road  
Cambridge  
CB5 8LA  
United Kingdom

Email: [info@biorbyt.com](mailto:info@biorbyt.com), [support@biorbyt.com](mailto:support@biorbyt.com)

Phone: +44 (0)1223 859353 | Fax: +1 (415) 651-8558

**Biorbyt LLC**

68 TW Alexander Drive  
Research Triangle Park  
Durham  
NC 27713  
United States

Email: [info@biorbyt.com](mailto:info@biorbyt.com), [support@biorbyt.com](mailto:support@biorbyt.com)

Phone: +1 (415) 906-5211 | Fax: +1 (415) 651-8558