

Product Datasheet

SENP3 Rabbit Polyclonal Antibody (orb582712)

Catalog Number	orb582712
Category	Antibodies
Description	Rabbit polyclonal antibody to SENP3
Target	SENP3
Clonality	Polyclonal
Species/Host	Rabbit
Conjugation	Unconjugated
Reactivity	Human, Rat
Predicted Reactivity	Bovine, Canine, Equine, Guinea pig, Mouse, Rabbit
Form/Appearance	Liquid. Purified antibody supplied in 1x PBS buffer with 0.09% (w/v) sodium azide and 2% sucrose.
Concentration	0.5 mg/ml
Buffer/Preservatives	Liquid. Purified antibody supplied in 1x PBS buffer with 0.09% (w/v) sodium azide and 2% sucrose.
Purification	Affinity Purified
Immunogen	The immunogen is a synthetic peptide directed towards the N terminal region of human SENP3
Protein Sequence	Synthetic peptide located within the following region: PPPKPRLKSGGGFGPDPGSGTTVPARRLPVPRPSFDASASEEEEEEEEEEE
UniProt ID	Q9H4L4

Biorbyt Ltd.

7 Signet Court, Swann Road
Cambridge
CB5 8LA
United Kingdom

Email: info@biorbyt.com, support@biorbyt.com

Phone: [+44 \(0\)1223 859353](tel:+44(0)1223859353) | Fax: [+1 \(415\) 651-8558](tel:+1(415)651-8558)

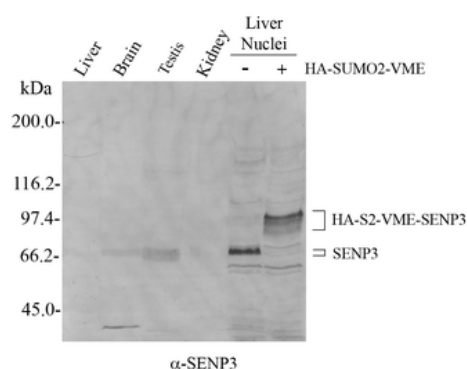
Biorbyt LLC

68 TW Alexander Drive
Research Triangle Park
Durham
NC 27713
United States

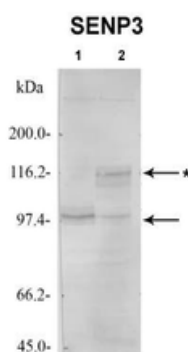
Email: info@biorbyt.com, support@biorbyt.com

Phone: [+1 \(415\) 906-5211](tel:+1(415)906-5211) | Fax: [+1 \(415\) 651-8558](tel:+1(415)651-8558)

MW	65kDa
Tested applications	IF, WB
Storage	Maintain refrigerated at 2-8°C for up to 2 weeks. For long term storage store at -20°C in small aliquots to prevent freeze-thaw cycles.
Note	For research use only
NCBI	NP_056485
Expiration Date	12 months from date of receipt.



Sample Type: 1. Rat Liver (200 ug), 2. Rat Brain (200 ug), 3. Rat Testis (200 ug), 4. Rat Kidney (200 ug), 5. Rat Liver nuclei (-) no HA-SUMO2-WME, 6. Rat Liver nuclei (+) incubated with 100 ng HA-SUMO2-WME, Primary dilution: 1:1000, Secondary Antibody: alkaline phosphatase-conjugated anti-rabbit, Secondary dilution: 1:1000.



Sample Type: 1. HeLa cell extract (200 ug), 2. HeLa cell extract (200 ug) incubated with HA-SUMO2-VME*HA-S2-VME-SENP3. Primary dilution: 1:1000, Secondary Antibody: alkaline phosphatase-conjugated anti-rabbit Secondary dilution: 1:1000. SENP3 is strongly supported by BioGPS gene expression data to be expressed in HeLa.

Biorbyt Ltd.

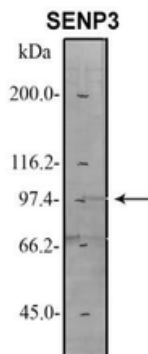
7 Signet Court, Swann Road
Cambridge
CB5 8LA
United Kingdom

Email: info@biorbyt.com, support@biorbyt.com
Phone: +44 (0)1223 859353 | Fax: +1 (415) 651-8558

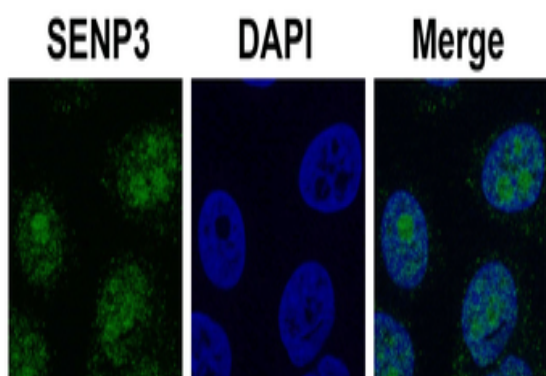
Biorbyt LLC

68 TW Alexander Drive
Research Triangle Park
Durham
NC 27713
United States

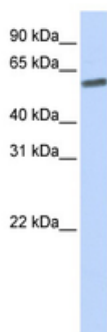
Email: info@biorbyt.com, support@biorbyt.com
Phone: +1 (415) 906-5211 | Fax: +1 (415) 651-8558



Sample Type: 1. HeLa cell extract (200 ug), Primary dilution: 1:1000, Secondary Antibody: alkaline phosphatase-conjugated anti-rabbit, Secondary dilution: 1:1000. SENP3 is strongly supported by BioGPS gene expression data to be expressed in HeLa.



SENP3 antibody - N-terminal region (orb582712) in HeLa cells using Immunofluorescence, Antibody concentration: 2 ug/ml, SENP3 is strongly supported by BioGPS gene expression data to be expressed in HeLa.



WB Suggested Anti-SENP3 Antibody Titration: 0.2-1 ug/ml, ELISA Titer: 1:1562500, Positive Control: 721_B cell lysate. SENP3 is strongly supported by BioGPS gene expression data to be expressed in Human 721_B cells.

Biorbyt Ltd.

7 Signet Court, Swann Road
Cambridge
CB5 8LA
United Kingdom

Email: info@biorbyt.com, support@biorbyt.com
Phone: +44 (0)1223 859353 | Fax: +1 (415) 651-8558

Biorbyt LLC

68 TW Alexander Drive
Research Triangle Park
Durham
NC 27713
United States

Email: info@biorbyt.com, support@biorbyt.com
Phone: +1 (415) 906-5211 | Fax: +1 (415) 651-8558