

## Product Datasheet

### LDHA Rabbit Polyclonal Antibody (orb582474)

|                             |   |
|-----------------------------|---|
| <b>Catalog Number</b>       | orb582474   |
| <b>Category</b>             | Antibodies  |
| <b>Description</b>          | Rabbit polyclonal antibody to LDHA  |
| <b>Target</b>               | LDHA  |
| <b>Clonality</b>            | Polyclonal  |
| <b>Species/Host</b>         | Rabbit  |
| <b>Conjugation</b>          | Unconjugated  |
| <b>Reactivity</b>           | Human   |
| <b>Predicted Reactivity</b> | Bovine, Canine, Equine, Goat, Guinea pig, Mouse, Rabbit, Rat, Zebrafish                                     |
| <b>Form/Appearance</b>      | Liquid. Purified antibody supplied in 1x PBS buffer with 0.09% (w/v) sodium azide and 2% sucrose.           |
| <b>Concentration</b>        | 0.5 mg/ml   |
| <b>Buffer/Preservatives</b> | Liquid. Purified antibody supplied in 1x PBS buffer with 0.09% (w/v) sodium azide and 2% sucrose.           |
| <b>Purification</b>         | Affinity Purified   |
| <b>Immunogen</b>            | The immunogen is a synthetic peptide directed towards the middle region of human LDHA                       |
| <b>Protein Sequence</b>     | Synthetic peptide located within the following region:<br>PLSCHGWVLGEHGDSSVPVWSGMNVAGVSLKTLHPDLGTDKDKQWKEVH |
| <b>UniProt ID</b>           | <b>P00338</b>   |

**Biorbyt Ltd.**

7 Signet Court, Swann Road  
Cambridge  
CB5 8LA  
United Kingdom

Email: [info@biorbyt.com](mailto:info@biorbyt.com), [support@biorbyt.com](mailto:support@biorbyt.com)

Phone: [+44 \(0\)1223 859353](tel:+44(0)1223859353) | Fax: [+1 \(415\) 651-8558](tel:+1(415)651-8558)

**Biorbyt LLC**

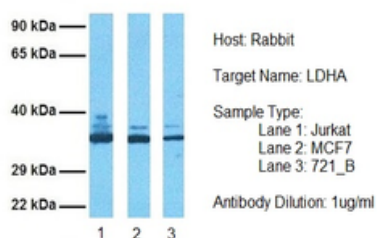
68 TW Alexander Drive  
Research Triangle Park  
Durham  
NC 27713  
United States

Email: [info@biorbyt.com](mailto:info@biorbyt.com), [support@biorbyt.com](mailto:support@biorbyt.com)

Phone: [+1 \(415\) 906-5211](tel:+1(415)906-5211) | Fax: [+1 \(415\) 651-8558](tel:+1(415)651-8558)

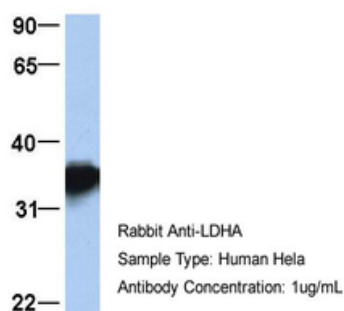
|                            |   |
|----------------------------|---|
| <b>MW</b>                  | 37kDa   |
| <b>Tested applications</b> | IHC-P, WB   |
| <b>Storage</b>             | Maintain refrigerated at 2-8°C for up to 2 weeks. For long term storage store at -20°C in small aliquots to prevent freeze-thaw cycles. |
| <b>Note</b>                | For research use only   |
| <b>NCBI</b>                | <b>NP_005557</b>  |
| <b>Expiration Date</b>     | 12 months from date of receipt.   |

### LDHA



Sample Tissue: Human Jurkat, MCF7, 721\_B, Antibody dilution: 1.0 µg/ml.

### LDHA



Sample Type: HeLa, Antibody dilution: 1.0 µg/ml. LDHA is supported by BioGPS gene expression data to be expressed in HeLa.

#### **Biorbyt Ltd.**

7 Signet Court, Swann Road  
Cambridge  
CB5 8LA  
United Kingdom

Email: [info@biorbyt.com](mailto:info@biorbyt.com), [support@biorbyt.com](mailto:support@biorbyt.com)

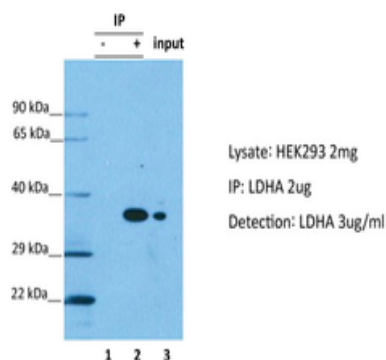
Phone: +44 (0)1223 859353 | Fax: +1 (415) 651-8558

#### **Biorbyt LLC**

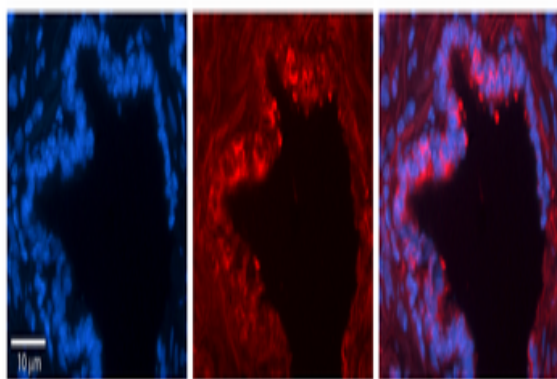
68 TW Alexander Drive  
Research Triangle Park  
Durham  
NC 27713  
United States

Email: [info@biorbyt.com](mailto:info@biorbyt.com), [support@biorbyt.com](mailto:support@biorbyt.com)

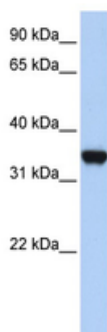
Phone: +1 (415) 906-5211 | Fax: +1 (415) 651-8558



LDHA was immunoprecipitated from 2 mg HEK293 Whole Cell Lysate with orb582474 with 1:200 dilution. Western blot was performed using orb582474 at 1/1000 dilution, Lane 1: Control IP in HEK293 Whole Cell Lysate, Lane 2: LDHA IP with orb582474 in HEK293 Whole Cell Lysate, Lane 3: Input of HEK293 Whole Cell Lysate.



Rabbit Anti-LDHA Antibody, Catalog Number: orb582474, Formalin Fixed Paraffin Embedded Tissue: Human Bronchial Epithelial Tissue, Observed Staining: Cytoplasmic, Primary Antibody Concentration: 1:100, Secondary Antibody: Donkey anti-Rabbit-Cy3, Secondary Antibody Concentration: 1:200, Magnification: 20X, Exposure Time: 0.5-2.0 sec.



WB Suggested Anti-LDHA Antibody Titration: 0.2-1 ug/ml, ELISA Titer: 1:312500, Positive Control: 293T cell lysate.

**Biorbyt Ltd.**

7 Signet Court, Swann Road  
Cambridge  
CB5 8LA  
United Kingdom

Email: [info@biorbyt.com](mailto:info@biorbyt.com), [support@biorbyt.com](mailto:support@biorbyt.com)  
Phone: +44 (0)1223 859353 | Fax: +1 (415) 651-8558

**Biorbyt LLC**

68 TW Alexander Drive  
Research Triangle Park  
Durham  
NC 27713  
United States

Email: [info@biorbyt.com](mailto:info@biorbyt.com), [support@biorbyt.com](mailto:support@biorbyt.com)  
Phone: +1 (415) 906-5211 | Fax: +1 (415) 651-8558