

Product Datasheet

GSR Rabbit Polyclonal Antibody (orb582295)

Catalog Number	orb582295
Category	Antibodies
Description	Rabbit polyclonal antibody to GSR
Target	GSR
Clonality	Polyclonal
Species/Host	Rabbit
Conjugation	Unconjugated
Reactivity	Human, Mouse, Zebrafish
Predicted Reactivity	Bovine, Canine, Equine, Guinea pig, Rabbit, Rat
Form/Appearance	Liquid. Purified antibody supplied in 1x PBS buffer with 0.09% (w/v) sodium azide and 2% sucrose.
Concentration	0.5 mg/ml
Buffer/Preservatives	Liquid. Purified antibody supplied in 1x PBS buffer with 0.09% (w/v) sodium azide and 2% sucrose.
Purification	Affinity Purified
Immunogen	The immunogen is a synthetic peptide directed towards the N terminal region of human GSR
Protein Sequence	Synthetic peptide located within the following region: PTIEVSGKKYTAPHILIATGGMPSTPHESQIPGASLGITSDGFFQLEELP
UniProt ID	P00390

Biorbyt Ltd.

7 Signet Court, Swann Road
Cambridge
CB5 8LA
United Kingdom

Email: info@biorbyt.com, support@biorbyt.com

Phone: [+44 \(0\)1223 859353](tel:+44(0)1223859353) | Fax: [+1 \(415\) 651-8558](tel:+1(415)651-8558)

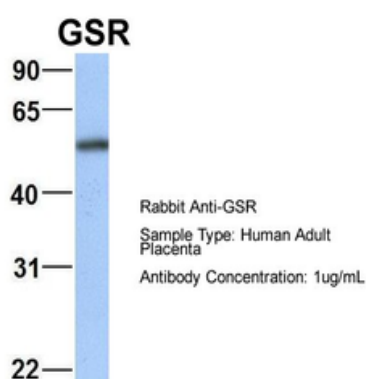
Biorbyt LLC

68 TW Alexander Drive
Research Triangle Park
Durham
NC 27713
United States

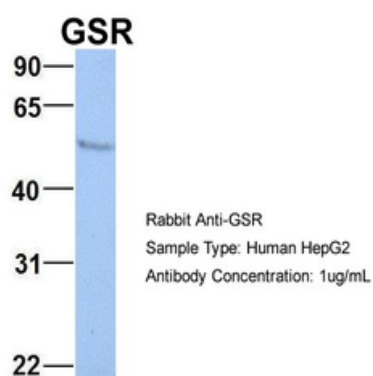
Email: info@biorbyt.com, support@biorbyt.com

Phone: [+1 \(415\) 906-5211](tel:+1(415)906-5211) | Fax: [+1 \(415\) 651-8558](tel:+1(415)651-8558)

MW	56kDa
Tested applications	IHC, WB
Storage	Maintain refrigerated at 2-8°C for up to 2 weeks. For long term storage store at -20°C in small aliquots to prevent freeze-thaw cycles.
Note	For research use only
NCBI	NP_000628
Expiration Date	12 months from date of receipt.



Sample Type: Human Adult Placenta, Antibody dilution: 1.0 ug/ml.



Sample Type: HepG2, Antibody dilution: 1.0 ug/ml. GSR is supported by BioGPS gene expression data to be expressed in HepG2.

Biorbyt Ltd.

7 Signet Court, Swann Road
Cambridge
CB5 8LA
United Kingdom

Email: info@biorbyt.com, support@biorbyt.com

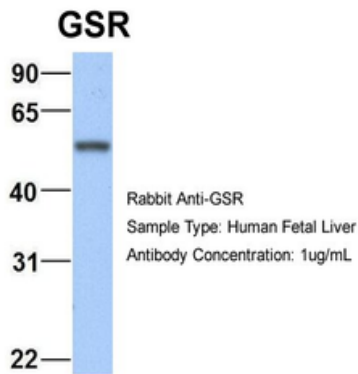
Phone: [+44 \(0\)1223 859353](tel:+44(0)1223859353) | Fax: [+1 \(415\) 651-8558](tel:+1(415)651-8558)

Biorbyt LLC

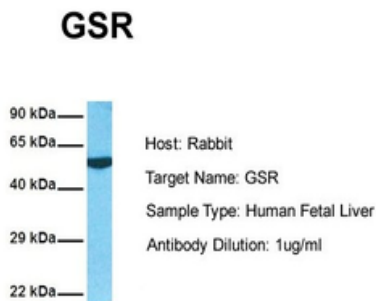
68 TW Alexander Drive
Research Triangle Park
Durham
NC 27713
United States

Email: info@biorbyt.com, support@biorbyt.com

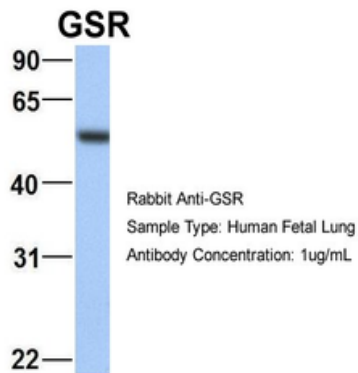
Phone: [+1 \(415\) 906-5211](tel:+1(415)906-5211) | Fax: [+1 \(415\) 651-8558](tel:+1(415)651-8558)



Sample Type: Human Fetal Liver, Antibody dilution: 1.0 ug/ml.



Sample Tissue: Human Fetal Liver, Antibody dilution: 1.0 ug/ml.



Sample Type: Human Fetal Lung, Antibody dilution: 1.0 ug/ml.

Biorbyt Ltd.

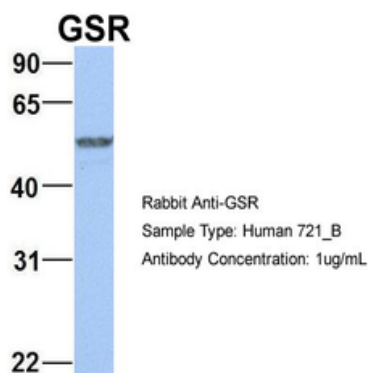
7 Signet Court, Swann Road
Cambridge
CB5 8LA
United Kingdom

Email: info@biorbyt.com, support@biorbyt.com
Phone: [+44 \(0\)1223 859353](tel:+44(0)1223859353) | Fax: [+1 \(415\) 651-8558](tel:+1(415)651-8558)

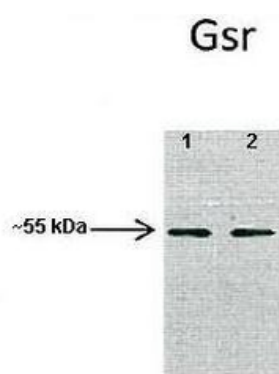
Biorbyt LLC

68 TW Alexander Drive
Research Triangle Park
Durham
NC 27713
United States

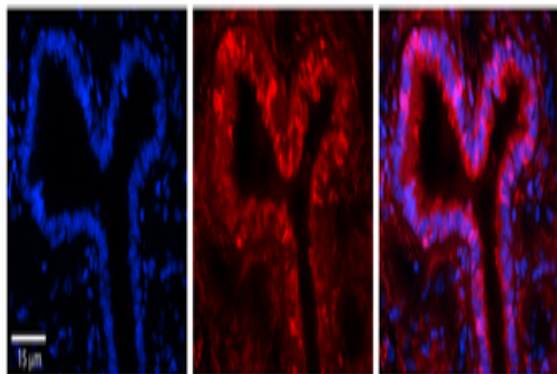
Email: info@biorbyt.com, support@biorbyt.com
Phone: [+1 \(415\) 906-5211](tel:+1(415)906-5211) | Fax: [+1 \(415\) 651-8558](tel:+1(415)651-8558)



Sample Type: 721_B, Antibody dilution: 1.0 ug/ml. GSR is supported by BioGPS gene expression data to be expressed in 721_B.



Lanes: 1: 40 ug mouse heart lysate, 2: 40 ug mouse skeletal muscle lysate, Primary Antibody dilution: 1:1000, Secondary Antibody: Anti-rabbit HRP, Secondary Antibody dilution: 1:10000, Gene Name: GSR.



Rabbit Anti-GSR Antibody, Catalog Number: orb582295, Formalin Fixed Paraffin Embedded Tissue: Human Bronchial Epithelial Tissue, Observed Staining: Cytoplasmic, Primary Antibody Concentration: 1:100, Secondary Antibody: Donkey anti-Rabbit-Cy3, Secondary Antibody Concentration: 1:200, Magnification: 20X, Exposure Time: 0.5-2.0 sec.

Biorbyt Ltd.

7 Signet Court, Swann Road
Cambridge
CB5 8LA
United Kingdom

Email: info@biorbyt.com, support@biorbyt.com

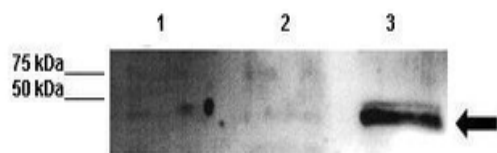
Phone: +44 (0)1223 859353 | Fax: +1 (415) 651-8558

Biorbyt LLC

68 TW Alexander Drive
Research Triangle Park
Durham
NC 27713
United States

Email: info@biorbyt.com, support@biorbyt.com

Phone: +1 (415) 906-5211 | Fax: +1 (415) 651-8558

GSR

WB Suggested Anti-GSR Antibody, Positive Control: Lane 1: 10 ug untreated zebrafish head lysate, Lane 2: 10 ug 3hr H₂O₂ treated zebrafish head lysate, Lane 3: 10 ug 6hr H₂O₂ treated zebrafish head lysate, Primary Antibody Dilution: 1:1000, Secondary Antibody: Anti rabbit-HRP, Secondary Antibody Dilution: 1:10000.



WB Suggested Anti-GSR Antibody Titration: 0.2-1 ug/ml, ELISA Titer: 1:312500, Positive Control: HeLa cell lysate.

Biorbyt Ltd.

7 Signet Court, Swann Road
Cambridge
CB5 8LA
United Kingdom

Email: info@biorbyt.com, support@biorbyt.com

Phone: [+44 \(0\)1223 859353](tel:+44(0)1223859353) | Fax: [+1 \(415\) 651-8558](tel:+1(415)651-8558)

Biorbyt LLC

68 TW Alexander Drive
Research Triangle Park
Durham
NC 27713
United States

Email: info@biorbyt.com, support@biorbyt.com

Phone: [+1 \(415\) 906-5211](tel:+1(415)906-5211) | Fax: [+1 \(415\) 651-8558](tel:+1(415)651-8558)