

Product Datasheet

HSPA1L Rabbit Polyclonal Antibody (orb582161)

Catalog Number	orb582161
Category	Antibodies
Description	Rabbit polyclonal antibody to HSPA1L
Target	HSPA1L
Clonality	Polyclonal
Species/Host	Rabbit
Conjugation	Unconjugated
Reactivity	Human, Rat
Predicted Reactivity	Bovine, Canine, Equine, Goat, Mouse, Porcine
Form/Appearance	Liquid. Purified antibody supplied in 1x PBS buffer with 0.09% (w/v) sodium azide and 2% sucrose.
Concentration	0.5 mg/ml
Buffer/Preservatives	Liquid. Purified antibody supplied in 1x PBS buffer with 0.09% (w/v) sodium azide and 2% sucrose.
Purification	Affinity Purified
Immunogen	The immunogen is a synthetic peptide directed towards the C terminal region of human HSPA1L
Protein Sequence	Synthetic peptide located within the following region: DEFDHKRKELEQMCNPIITKLYQGGCTGPACGTGYVPRPATGPTIEEVD
UniProt ID	P34931

Biorbyt Ltd.

7 Signet Court, Swann Road
Cambridge
CB5 8LA
United Kingdom

Email: info@biorbyt.com, support@biorbyt.com

Phone: [+44 \(0\)1223 859353](tel:+44(0)1223859353) | Fax: [+1 \(415\) 651-8558](tel:+1(415)651-8558)

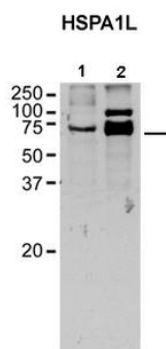
Biorbyt LLC

68 TW Alexander Drive
Research Triangle Park
Durham
NC 27713
United States

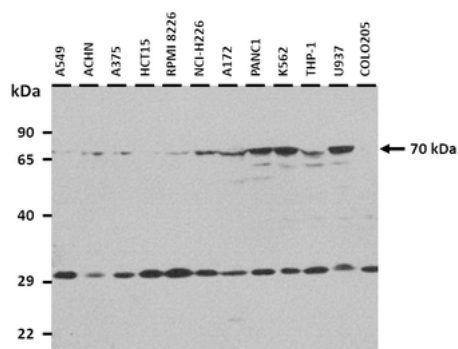
Email: info@biorbyt.com, support@biorbyt.com

Phone: [+1 \(415\) 906-5211](tel:+1(415)906-5211) | Fax: [+1 \(415\) 651-8558](tel:+1(415)651-8558)

MW	70kDa
Tested applications	WB
Storage	Maintain refrigerated at 2-8°C for up to 2 weeks. For long term storage store at -20°C in small aliquots to prevent freeze-thaw cycles.
Note	For research use only
NCBI	NP_005518
Expiration Date	12 months from date of receipt.



Sample Type: 1. Lamprey CNS (20 ug), 2. Rat Brain Lysate (20 ug), Primary dilution: 1:1000, Secondary Antibody: Goat anti-Rabbit HRP, Secondary dilution: 1:4000.



25 ug of the indicated Human whole cell extracts was loaded onto a 12% SDS-PAGE gel. 0.2 ug/ml of the antibody was used in this experiment.

Biorbyt Ltd.

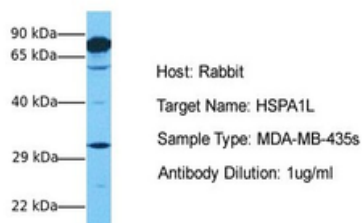
7 Signet Court, Swann Road
Cambridge
CB5 8LA
United Kingdom

Email: info@biorbyt.com, support@biorbyt.com
Phone: +44 (0)1223 859353 | Fax: +1 (415) 651-8558

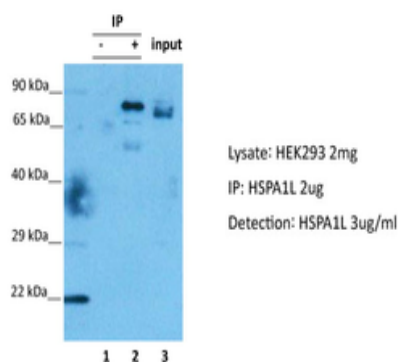
Biorbyt LLC

68 TW Alexander Drive
Research Triangle Park
Durham
NC 27713
United States

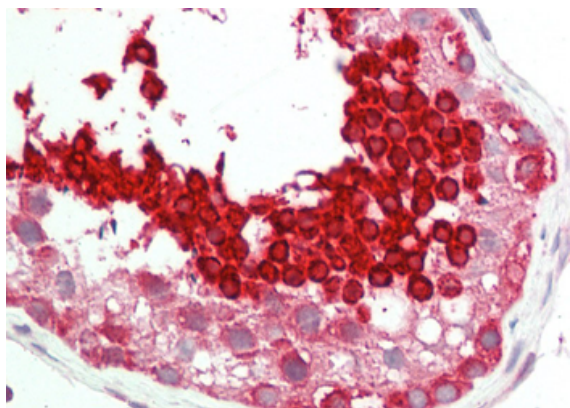
Email: info@biorbyt.com, support@biorbyt.com
Phone: +1 (415) 906-5211 | Fax: +1 (415) 651-8558

HSPA1L

Sample Tissue: Human MDA-MB-435s, Antibody dilution: 1.0 ug/ml.



HSPA1L was immunoprecipitated from 2 mg HEK293 Whole Cell Lysate with orb582161 with 1:200 dilution. Western blot was performed using orb582161 at 1/1000 dilution, Lane 1: Control IP in HEK293 Whole Cell Lysate, Lane 2: HSPA1L IP with orb582161 in HEK293 Whole Cell Lysate, Lane 3: Input of HEK293 Whole Cell Lysate.



Rabbit Anti-HSPA1L antibody, Formalin Fixed Paraffin Embedded Tissue: Human Testis, Primary antibody Concentration: 1:200, Secondary Antibody: Donkey anti-Rabbit-Cy3, Secondary Antibody Concentration: 1:200, Magnification: 20x, Exposure Time: 0.5-2.0 sec.

Biorbyt Ltd.

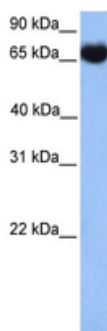
7 Signet Court, Swann Road
Cambridge
CB5 8LA
United Kingdom

Email: info@biorbyt.com, support@biorbyt.com
Phone: +44 (0)1223 859353 | Fax: +1 (415) 651-8558

Biorbyt LLC

68 TW Alexander Drive
Research Triangle Park
Durham
NC 27713
United States

Email: info@biorbyt.com, support@biorbyt.com
Phone: +1 (415) 906-5211 | Fax: +1 (415) 651-8558



WB Suggested Anti-HSPA1L Antibody Titration: 0.2-1 ug/ml,
Positive Control: Jurkat cell lysate.

Biorbyt Ltd.

7 Signet Court, Swann Road
Cambridge
CB5 8LA
United Kingdom

Email: info@biorbyt.com, support@biorbyt.com

Phone: [+44 \(0\)1223 859353](tel:+44(0)1223859353) | Fax: [+1 \(415\) 651-8558](tel:+1(415)651-8558)

Biorbyt LLC

68 TW Alexander Drive
Research Triangle Park
Durham
NC 27713
United States

Email: info@biorbyt.com, support@biorbyt.com

Phone: [+1 \(415\) 906-5211](tel:+1(415)906-5211) | Fax: [+1 \(415\) 651-8558](tel:+1(415)651-8558)