

Product Datasheet

CTBP2 Rabbit Polyclonal Antibody (orb581169)

Catalog Number	orb581169
Category	Antibodies
Description	Rabbit polyclonal antibody to CTBP2
Target	CTBP2
Clonality	Polyclonal
Species/Host	Rabbit
Conjugation	Unconjugated
Reactivity	Human, Mouse
Predicted Reactivity	Bovine, Canine, Equine, Goat, Guinea pig, Rabbit, Rat
Form/Appearance	Liquid. Purified antibody supplied in 1x PBS buffer with 0.09% (w/v) sodium azide and 2% sucrose.
Concentration	0.5 mg/ml
Buffer/Preservatives	Liquid. Purified antibody supplied in 1x PBS buffer with 0.09% (w/v) sodium azide and 2% sucrose.
Purification	Affinity Purified
Immunogen	The immunogen is a synthetic peptide directed towards the C terminal region of human CTBP2
Protein Sequence	Synthetic peptide located within the following region: TGRIPESLRNCVNKEFFVTSAPWSVIDQQAIHPELNGATYRYPGIVGVA
UniProt ID	P56545

Biorbyt Ltd.

7 Signet Court, Swann Road
Cambridge
CB5 8LA
United Kingdom

Email: info@biorbyt.com, support@biorbyt.com

Phone: [+44 \(0\)1223 859353](tel:+44(0)1223859353) | Fax: [+1 \(415\) 651-8558](tel:+1(415)651-8558)

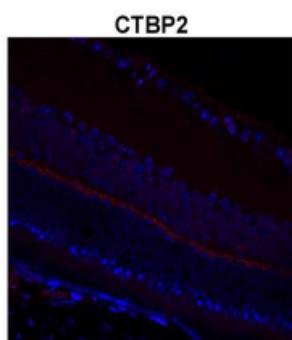
Biorbyt LLC

68 TW Alexander Drive
Research Triangle Park
Durham
NC 27713
United States

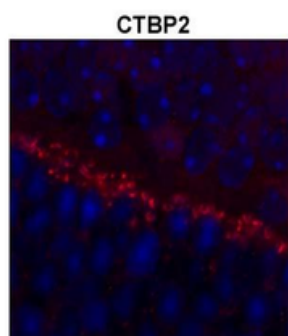
Email: info@biorbyt.com, support@biorbyt.com

Phone: [+1 \(415\) 906-5211](tel:+1(415)906-5211) | Fax: [+1 \(415\) 651-8558](tel:+1(415)651-8558)

MW	106kDa
Tested applications	IHC, WB
Storage	Maintain refrigerated at 2-8°C for up to 2 weeks. For long term storage store at -20°C in small aliquots to prevent freeze-thaw cycles.
Note	For research use only
NCBI	NP_073713
Expiration Date	12 months from date of receipt.



Sample Type: complete mouse retina sections, Red: Primary, Blue: DAPI, Primary dilution: 1:200, Secondary Antibody: Goat anti-Rabbit AF568 IgG(H+L), Secondary dilution: 1:200.



Sample Type: outer mouse plexiform layer, Red: Primary, Blue: DAPI, Primary dilution: 1:200, Secondary Antibody: Goat anti-Rabbit AF568 IgG(H+L), Secondary dilution: 1:200.

Biorbyt Ltd.

7 Signet Court, Swann Road
Cambridge
CB5 8LA
United Kingdom

Email: info@biorbyt.com, support@biorbyt.com

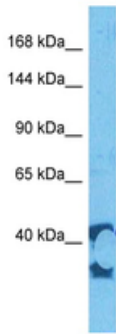
Phone: +44 (0)1223 859353 | Fax: +1 (415) 651-8558

Biorbyt LLC

68 TW Alexander Drive
Research Triangle Park
Durham
NC 27713
United States

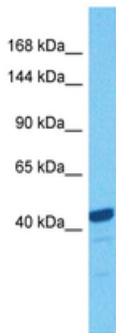
Email: info@biorbyt.com, support@biorbyt.com

Phone: +1 (415) 906-5211 | Fax: +1 (415) 651-8558



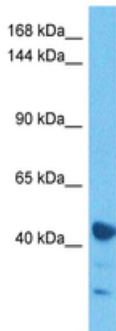
Host: Rabbit
Target Name: CTBP2
Sample Type: A549 Cell Lysate
Antibody Dilution: 1.0µg/ml

Sample Tissue: Human A549 Whole Cell, Antibody dilution: 0.5 ug/ml.



Host: Rabbit
Target Name: CTBP2
Sample Type: A549 Cell Lysate
Antibody Dilution: 1.0µg/ml

Sample Tissue: Human A549 Whole Cell, Antibody dilution: 0.5 ug/ml.



Host: Rabbit
Target Name: CTBP2
Sample Type: HepG2 Cell Lysate
Antibody Dilution: 1.0µg/ml

Sample Tissue: Human HepG2 Whole Cell, Antibody dilution: 0.5 ug/ml.

Biorbyt Ltd.

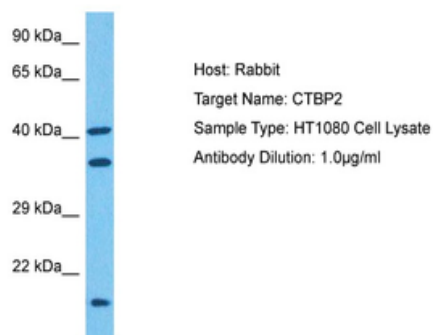
7 Signet Court, Swann Road
Cambridge
CB5 8LA
United Kingdom

Email: info@biorbyt.com, support@biorbyt.com
Phone: +44 (0)1223 859353 | Fax: +1 (415) 651-8558

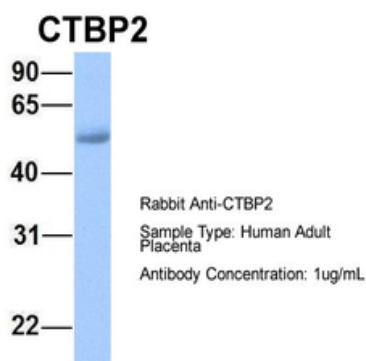
Biorbyt LLC

68 TW Alexander Drive
Research Triangle Park
Durham
NC 27713
United States

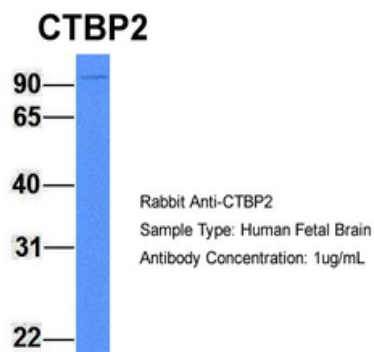
Email: info@biorbyt.com, support@biorbyt.com
Phone: +1 (415) 906-5211 | Fax: +1 (415) 651-8558



Sample Tissue: Human HT1080 Whole Cell, Antibody dilution: 0.5 ug/ml.



Sample Type: Human Adult Placenta, Antibody dilution: 1.0 ug/ml.



Sample Type: Human Fetal Brain, Antibody dilution: 1.0 ug/ml.

Biorbyt Ltd.

7 Signet Court, Swann Road
Cambridge
CB5 8LA
United Kingdom

Email: info@biorbyt.com, support@biorbyt.com

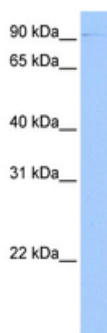
Phone: [+44 \(0\)1223 859353](tel:+44(0)1223859353) | Fax: [+1 \(415\) 651-8558](tel:+1(415)651-8558)

Biorbyt LLC

68 TW Alexander Drive
Research Triangle Park
Durham
NC 27713
United States

Email: info@biorbyt.com, support@biorbyt.com

Phone: [+1 \(415\) 906-5211](tel:+1(415)906-5211) | Fax: [+1 \(415\) 651-8558](tel:+1(415)651-8558)



WB Suggested Anti-CTBP2 Antibody Titration: 0.2-1 ug/ml,
Positive Control: Hela cell lysate. CTBP2 is strongly supported
by BioGPS gene expression data to be expressed in Human
HeLa cells.

Biorbyt Ltd.

7 Signet Court, Swann Road
Cambridge
CB5 8LA
United Kingdom

Email: info@biorbyt.com, support@biorbyt.com

Phone: [+44 \(0\)1223 859353](tel:+44(0)1223859353) | Fax: [+1 \(415\) 651-8558](tel:+1(415)651-8558)

Biorbyt LLC

68 TW Alexander Drive
Research Triangle Park
Durham
NC 27713
United States

Email: info@biorbyt.com, support@biorbyt.com

Phone: [+1 \(415\) 906-5211](tel:+1(415)906-5211) | Fax: [+1 \(415\) 651-8558](tel:+1(415)651-8558)