

Product Datasheet

MMEL1 Rabbit Polyclonal Antibody (orb581005)

Catalog Number	orb581005
Category	Antibodies
Description	Rabbit polyclonal antibody to MMEL1
Target	MMEL1
Clonality	Polyclonal
Species/Host	Rabbit
Conjugation	Unconjugated
Reactivity	Human
Predicted Reactivity	Bovine, Canine, Equine, Guinea pig, Mouse, Rat
Form/Appearance	Liquid. Purified antibody supplied in 1x PBS buffer with 0.09% (w/v) sodium azide and 2% sucrose.
Concentration	0.5 mg/ml
Buffer/Preservatives	Liquid. Purified antibody supplied in 1x PBS buffer with 0.09% (w/v) sodium azide and 2% sucrose.
Purification	Affinity Purified
Immunogen	The immunogen is a synthetic peptide directed towards the middle region of human MMEL1
Protein Sequence	Synthetic peptide located within the following region: EVVVYGIPYLQNLNENIIDTYSARTIQNYLVWRLVLDRIGSLSQRFKDTRV
UniProt ID	Q495T6

Biorbyt Ltd.

7 Signet Court, Swann Road
Cambridge
CB5 8LA
United Kingdom

Email: info@biorbyt.com, support@biorbyt.com

Phone: [+44 \(0\)1223 859353](tel:+44(0)1223859353) | Fax: [+1 \(415\) 651-8558](tel:+1(415)651-8558)

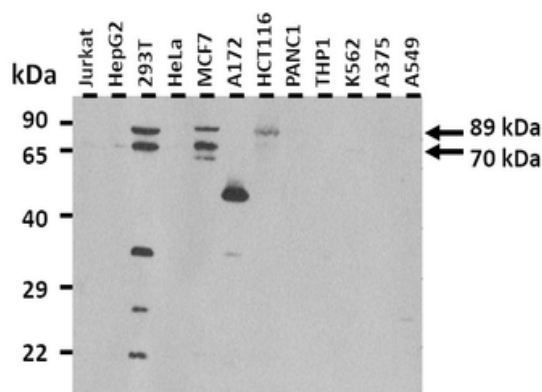
Biorbyt LLC

68 TW Alexander Drive
Research Triangle Park
Durham
NC 27713-2847
United States

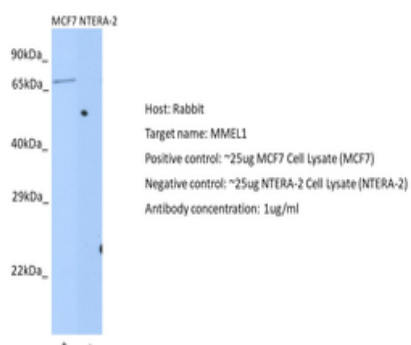
Email: info@biorbyt.com, support@biorbyt.com

Phone: [+1 \(415\) 906-5211](tel:+1(415)906-5211) | Fax: [+1 \(415\) 651-8558](tel:+1(415)651-8558)

MW	89 kDa
Tested applications	WB
Storage	Maintain refrigerated at 2-8°C for up to 2 weeks. For long term storage store at -20°C in small aliquots to prevent freeze-thaw cycles.
Note	For research use only
NCBI	NP_258428
Expiration Date	12 months from date of receipt.



25 ug of the indicated Human whole cell extracts was loaded onto a 12% SDS-PAGE gel. 3 ug/ml of the antibody was used in this experiment. Recommended dilution is 1-3 ug/ml for this antibody. Additional isoforms of ~70 kDa can be detected in some samples.



Positive control (+): MCF7 (N10), Negative control (-): NTERA2 (N27), Antibody concentration: 1 ug/ml.

Biorbyt Ltd.

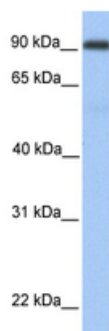
7 Signet Court, Swann Road
 Cambridge
 CB5 8LA
 United Kingdom

Email: info@biorbyt.com, support@biorbyt.com
 Phone: +44 (0)1223 859353 | Fax: +1 (415) 651-8558

Biorbyt LLC

68 TW Alexander Drive
 Research Triangle Park
 Durham
 NC 27713-2847
 United States

Email: info@biorbyt.com, support@biorbyt.com
 Phone: +1 (415) 906-5211 | Fax: +1 (415) 651-8558



WB Suggested Anti-MMEL1 Antibody Titration: 0.2-1 ug/ml,
Positive Control: Human Liver.

Biorbyt Ltd.

7 Signet Court, Swann Road
Cambridge
CB5 8LA
United Kingdom

Email: info@biorbyt.com, support@biorbyt.com

Phone: [+44 \(0\)1223 859353](tel:+44(0)1223859353) | Fax: [+1 \(415\) 651-8558](tel:+1(415)6518558)

Biorbyt LLC

68 TW Alexander Drive
Research Triangle Park
Durham
NC 27713-2847
United States

Email: info@biorbyt.com, support@biorbyt.com

Phone: [+1 \(415\) 906-5211](tel:+1(415)9065211) | Fax: [+1 \(415\) 651-8558](tel:+1(415)6518558)