

## Product Datasheet

### GLUD1 Rabbit Polyclonal Antibody (orb579550)

|                             |  |
|-----------------------------|--|
| <b>Catalog Number</b>       | orb579550  |
| <b>Category</b>             | Antibodies   |
| <b>Description</b>          | Rabbit polyclonal antibody to GLUD1  |
| <b>Target</b>               | GLUD1  |
| <b>Clonality</b>            | Polyclonal   |
| <b>Species/Host</b>         | Rabbit   |
| <b>Conjugation</b>          | Unconjugated   |
| <b>Reactivity</b>           | Human, Rat   |
| <b>Predicted Reactivity</b> | Bovine, Canine, Equine, Mouse, Porcine, Sheep, Yeast, Zebrafish  |
| <b>Form/Appearance</b>      | Liquid. Purified antibody supplied in 1x PBS buffer with 0.09% (w/v) sodium azide and 2% sucrose.            |
| <b>Concentration</b>        | 0.5 mg/ml  |
| <b>Buffer/Preservatives</b> | Liquid. Purified antibody supplied in 1x PBS buffer with 0.09% (w/v) sodium azide and 2% sucrose.            |
| <b>Purification</b>         | Affinity Purified  |
| <b>Immunogen</b>            | The immunogen is a synthetic peptide directed towards the N terminal region of human GLUD1                   |
| <b>Protein Sequence</b>     | Synthetic peptide located within the following region:<br>EGFFDRGASIVEDKLVEDLRTRESEEQKRNRVVGILRIIKPCNHVLSLSF |
| <b>UniProt ID</b>           | <b>P00367</b>  |

**Biorbyt Ltd.**

7 Signet Court, Swann Road  
Cambridge  
CB5 8LA  
United Kingdom

Email: [info@biorbyt.com](mailto:info@biorbyt.com), [support@biorbyt.com](mailto:support@biorbyt.com)

Phone: [+44 \(0\)1223 859353](tel:+44(0)1223859353) | Fax: [+1 \(415\) 651-8558](tel:+1(415)651-8558)

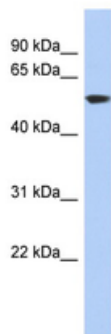
**Biorbyt LLC**

68 TW Alexander Drive  
Research Triangle Park  
Durham  
NC 27713  
United States

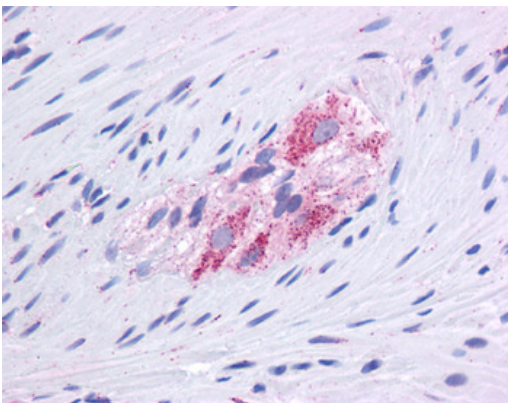
Email: [info@biorbyt.com](mailto:info@biorbyt.com), [support@biorbyt.com](mailto:support@biorbyt.com)

Phone: [+1 \(415\) 906-5211](tel:+1(415)906-5211) | Fax: [+1 \(415\) 651-8558](tel:+1(415)651-8558)

|                            |   |
|----------------------------|---|
| <b>MW</b>                  | 56kDa   |
| <b>Tested applications</b> | IHC, WB   |
| <b>Storage</b>             | Maintain refrigerated at 2-8°C for up to 2 weeks. For long term storage store at -20°C in small aliquots to prevent freeze-thaw cycles. |
| <b>Note</b>                | For research use only   |
| <b>NCBI</b>                | <b>NP_005262</b>  |
| <b>Expiration Date</b>     | 12 months from date of receipt.   |



GLUD1 antibody - N-terminal region (orb579550) validated by WB using HT1080 cell lysate at 1 ug/ml. GLUD1 is strongly supported by BioGPS gene expression data to be expressed in Human HT1080 cells.



Immunohistochemistry with CORTEX/KIDNEY tissue.

**Biorbyt Ltd.**

7 Signet Court, Swann Road  
Cambridge  
CB5 8LA  
United Kingdom

Email: [info@biorbyt.com](mailto:info@biorbyt.com), [support@biorbyt.com](mailto:support@biorbyt.com)

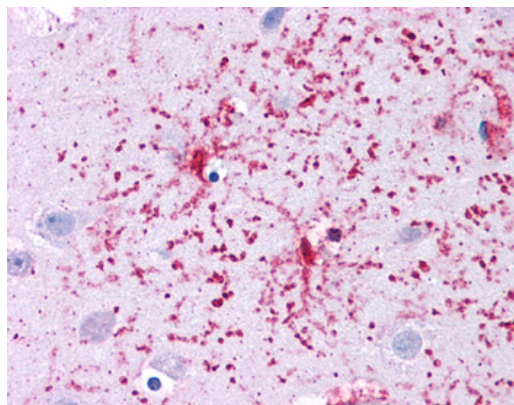
Phone: [+44 \(0\)1223 859353](tel:+44(0)1223859353) | Fax: [+1 \(415\) 651-8558](tel:+1(415)651-8558)

**Biorbyt LLC**

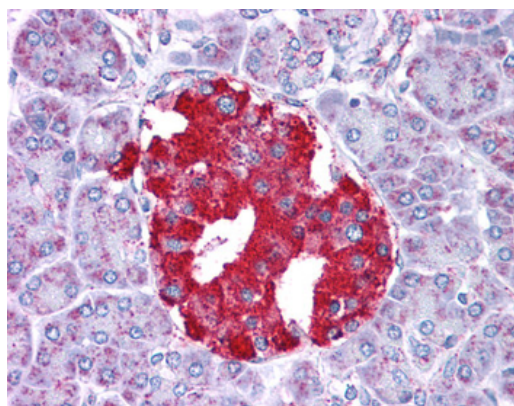
68 TW Alexander Drive  
Research Triangle Park  
Durham  
NC 27713  
United States

Email: [info@biorbyt.com](mailto:info@biorbyt.com), [support@biorbyt.com](mailto:support@biorbyt.com)

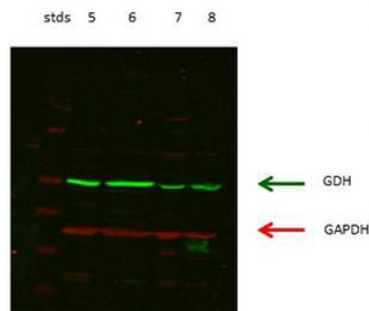
Phone: [+1 \(415\) 906-5211](tel:+1(415)906-5211) | Fax: [+1 \(415\) 651-8558](tel:+1(415)651-8558)



Immunohistochemistry with PFA fixed human colon tissue tissue.



Immunohistochemistry with pFA fixed human pancreas tissue tissue.



lanes 5: rat kidney cortex, lanes 6: rat kidney proximal tubules prepped from cortex, lanes 7: LLCPK-F+ pig kidney proximal tubule tissue culture lysate, lanes 8: rat brain supernatant.

**Biorbyt Ltd.**

7 Signet Court, Swann Road  
Cambridge  
CB5 8LA  
United Kingdom

Email: [info@biorbyt.com](mailto:info@biorbyt.com), [support@biorbyt.com](mailto:support@biorbyt.com)  
Phone: +44 (0)1223 859353 | Fax: +1 (415) 651-8558

**Biorbyt LLC**

68 TW Alexander Drive  
Research Triangle Park  
Durham  
NC 27713  
United States

Email: [info@biorbyt.com](mailto:info@biorbyt.com), [support@biorbyt.com](mailto:support@biorbyt.com)  
Phone: +1 (415) 906-5211 | Fax: +1 (415) 651-8558