

Product Datasheet

CPS1 Rabbit Polyclonal Antibody (orb579542)

Catalog Number	orb579542
Category	Antibodies
Description	Rabbit polyclonal antibody to CPS1
Target	CPS1
Clonality	Polyclonal
Species/Host	Rabbit
Conjugation	Unconjugated
Reactivity	Human, Porcine
Predicted Reactivity	Bovine, Canine, Equine, Guinea pig, Mouse, Rabbit, Rat, Yeast
Form/Appearance	Liquid. Purified antibody supplied in 1x PBS buffer with 0.09% (w/v) sodium azide and 2% sucrose.
Concentration	1.0 mg/ml
Buffer/Preservatives	Liquid. Purified antibody supplied in 1x PBS buffer with 0.09% (w/v) sodium azide and 2% sucrose.
Purification	Protein A purified
Immunogen	The immunogen is a synthetic peptide directed towards the middle region of human CPS1
Protein Sequence	Synthetic peptide located within the following region: YPSVTNYLYVTYNGQEHDVNFDDHGMMVLGCGPYHIGSSVEFDWCAVSSI
UniProt ID	P31327

Biorbyt Ltd.

7 Signet Court, Swann Road
Cambridge
CB5 8LA
United Kingdom

Email: info@biorbyt.com, support@biorbyt.com

Phone: [+44 \(0\)1223 859353](tel:+44(0)1223859353) | Fax: [+1 \(415\) 651-8558](tel:+1(415)651-8558)

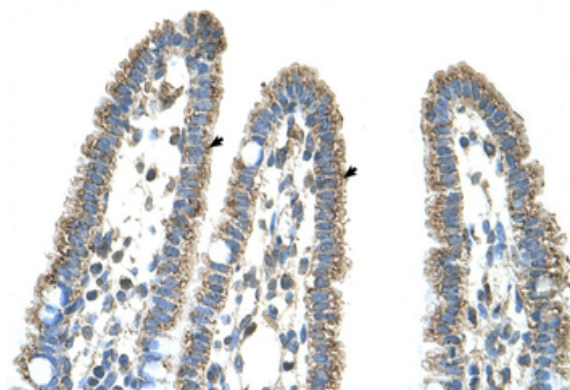
Biorbyt LLC

68 TW Alexander Drive
Research Triangle Park
Durham
NC 27713
United States

Email: info@biorbyt.com, support@biorbyt.com

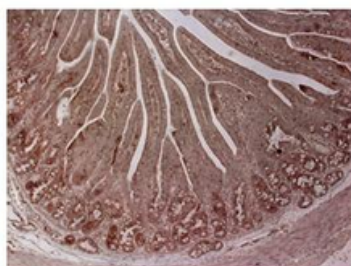
Phone: [+1 \(415\) 906-5211](tel:+1(415)906-5211) | Fax: [+1 \(415\) 651-8558](tel:+1(415)651-8558)

MW	165kDa
Tested applications	IHC, WB
Storage	Maintain refrigerated at 2-8°C for up to 2 weeks. For long term storage store at -20°C in small aliquots to prevent freeze-thaw cycles.
Note	For research use only
NCBI	NP_001866
Expiration Date	12 months from date of receipt.



Human Intestine

CPS



Brown: CPS

Sample Type: Pig duodenum, Primary Antibody dilution: 1:500, Secondary Antibody: Anti-rabbit-biotin, streptavidin-HRP, Secondary Antibody dilution: 1:500, Color/Signal Descriptions: Brown: CPS, Gene Name: CPS1.

Biorbyt Ltd.

7 Signet Court, Swann Road
Cambridge
CB5 8LA
United Kingdom

Email: info@biorbyt.com, support@biorbyt.com

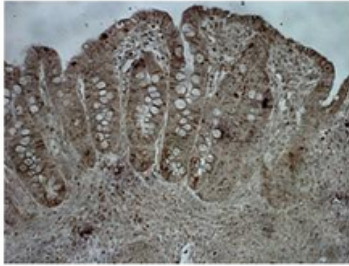
Phone: [+44 \(0\)1223 859353](tel:+44(0)1223859353) | Fax: [+1 \(415\) 651-8558](tel:+1(415)651-8558)

Biorbyt LLC

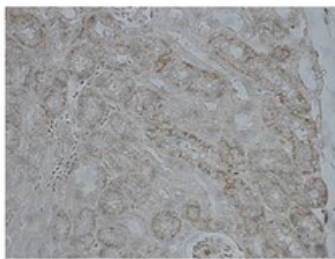
68 TW Alexander Drive
Research Triangle Park
Durham
NC 27713
United States

Email: info@biorbyt.com, support@biorbyt.com

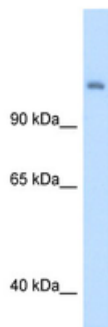
Phone: [+1 \(415\) 906-5211](tel:+1(415)906-5211) | Fax: [+1 \(415\) 651-8558](tel:+1(415)651-8558)

CPS**Brown: CPS**

Sample Type: Pig ileum, Primary Antibody dilution: 1:500, Secondary Antibody: Anti-rabbit-biotin, streptavidin-HRP, Secondary Antibody dilution: 1:500, Color/Signal Descriptions: Brown: CPS, Gene Name: CPS1.

CPS**Brown: CPS**

Sample Type: Pig kidney, Primary Antibody dilution: 1:500, Secondary Antibody: Anti-rabbit-biotin, streptavidin-HRP, Secondary Antibody dilution: 1:500, Color/Signal Descriptions: Brown: CPS, Gene Name: CPS1.



WB Suggested Anti-CPS1 Antibody Titration: 5.0 ug/ml, Positive Control: Fetal liver cell lysate.

Biorbyt Ltd.

7 Signet Court, Swann Road
Cambridge
CB5 8LA
United Kingdom

Email: info@biorbyt.com, support@biorbyt.com

Phone: [+44 \(0\)1223 859353](tel:+44(0)1223859353) | Fax: [+1 \(415\) 651-8558](tel:+1(415)651-8558)

Biorbyt LLC

68 TW Alexander Drive
Research Triangle Park
Durham
NC 27713
United States

Email: info@biorbyt.com, support@biorbyt.com

Phone: [+1 \(415\) 906-5211](tel:+1(415)906-5211) | Fax: [+1 \(415\) 651-8558](tel:+1(415)651-8558)