

Product Datasheet

CPT1A Rabbit Polyclonal Antibody (orb579286)

Catalog Number	orb579286
Category	Antibodies
Description	Rabbit polyclonal antibody to CPT1A
Target	CPT1A
Clonality	Polyclonal
Species/Host	Rabbit
Conjugation	Unconjugated
Reactivity	Human
Predicted Reactivity	Bovine, Canine, Equine, Guinea pig, Mouse, Rabbit, Rat, Sheep, Zebrafish
Form/Appearance	Liquid. Purified antibody supplied in 1x PBS buffer with 0.09% (w/v) sodium azide and 2% sucrose.
Concentration	0.5 mg/ml
Buffer/Preservatives	Liquid. Purified antibody supplied in 1x PBS buffer with 0.09% (w/v) sodium azide and 2% sucrose.
Purification	Affinity Purified
Immunogen	The immunogen is a synthetic peptide directed towards the middle region of human CPT1A
Protein Sequence	Synthetic peptide located within the following region: LSTSQTPQQVELFDLENNPEYVSSGGGFGPVADDGYGVSYILVGENLIN
UniProt ID	P50416

Biorbyt Ltd.

7 Signet Court, Swann Road
Cambridge
CB5 8LA
United Kingdom

Email: info@biorbyt.com, support@biorbyt.com

Phone: [+44 \(0\)1223 859353](tel:+44(0)1223859353) | Fax: [+1 \(415\) 651-8558](tel:+1(415)651-8558)

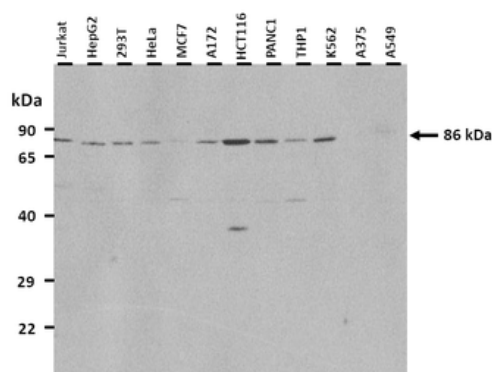
Biorbyt LLC

68 TW Alexander Drive
Research Triangle Park
Durham
NC 27713
United States

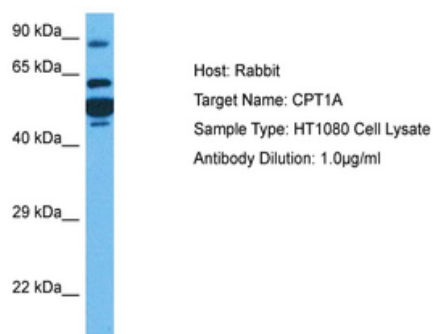
Email: info@biorbyt.com, support@biorbyt.com

Phone: [+1 \(415\) 906-5211](tel:+1(415)906-5211) | Fax: [+1 \(415\) 651-8558](tel:+1(415)651-8558)

MW	88 kDa
Tested applications	IHC, WB
Storage	Maintain refrigerated at 2-8°C for up to 2 weeks. For long term storage store at -20°C in small aliquots to prevent freeze-thaw cycles.
Note	For research use only
NCBI	NP_001027017
Expiration Date	12 months from date of receipt.



25 ug of the indicated Human whole cell extracts was loaded onto a 12% SDS-PAGE gel. 5 ug/ml of the antibody was used in this experiment. Recommended dilution for this antibody is 1-3 ug/ml.



Sample Tissue: Human HT1080 Whole Cell, Antibody Dilution: 1 ug/ml.

Biorbyt Ltd.

7 Signet Court, Swann Road
Cambridge
CB5 8LA
United Kingdom

Email: info@biorbyt.com, support@biorbyt.com

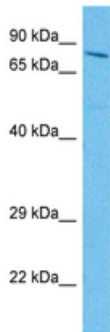
Phone: +44 (0)1223 859353 | Fax: +1 (415) 651-8558

Biorbyt LLC

68 TW Alexander Drive
Research Triangle Park
Durham
NC 27713
United States

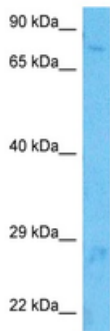
Email: info@biorbyt.com, support@biorbyt.com

Phone: +1 (415) 906-5211 | Fax: +1 (415) 651-8558



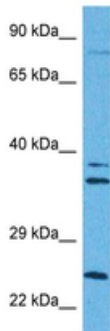
Host: Rabbit
Target Name: CPT1A
Sample Type: Jurkat Cell Lysate
Antibody Dilution: 1.0µg/ml

Sample Tissue: Human Jurkat Whole Cell, Antibody Dilution: 3 ug/ml.



Host: Rabbit
Target Name: CPT1A
Sample Type: Jurkat Cell Lysate
Antibody Dilution: 1.0µg/ml

Sample Tissue: Human Jurkat Whole Cell, Antibody Dilution: 3 ug/ml.



Host: Rabbit
Target Name: CPT1A
Sample Type: MDA-MB-435s Cell Lysate
Antibody Dilution: 1.0µg/ml

Sample Tissue: Human MDA-MB-435s Whole Cell, Antibody Dilution: 1 ug/ml.

Biorbyt Ltd.

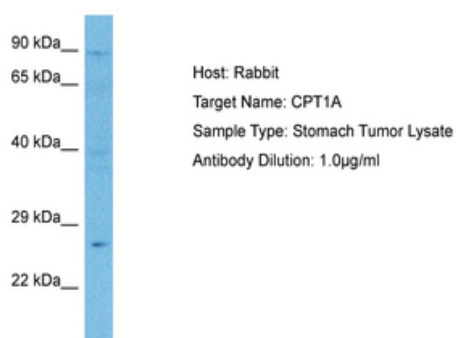
7 Signet Court, Swann Road
Cambridge
CB5 8LA
United Kingdom

Email: info@biorbyt.com, support@biorbyt.com
Phone: +44 (0)1223 859353 | Fax: +1 (415) 651-8558

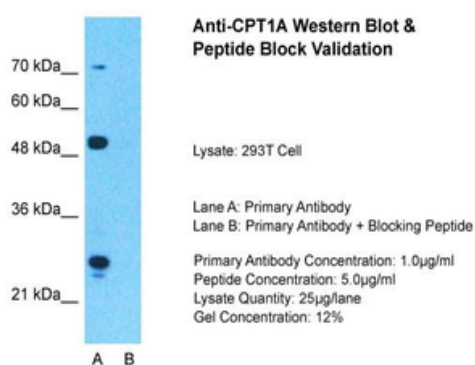
Biorbyt LLC

68 TW Alexander Drive
Research Triangle Park
Durham
NC 27713
United States

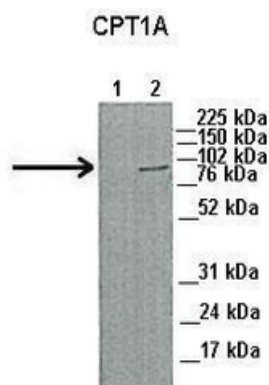
Email: info@biorbyt.com, support@biorbyt.com
Phone: +1 (415) 906-5211 | Fax: +1 (415) 651-8558



Sample Tissue: Human Stomach Tumor, Antibody Dilution: 1 ug/ml.



Sample Type: 293T, Lane A: Primary Antibody, Lane B: Primary Antibody + Blocking Peptide, Primary Antibody Concentration: 1 ug/ml, Peptide Concentration: 5 ug/ml, Lysate Quantity: 25 ug/lane/lane, Gel Concentration: 0.12.



Lanes: 1. 45 ug capan1 cell lysate, 2. 45 ug HPAF cell lysate, Primary Antibody Dilution: 1:1000, Secondary Antibody: Anti-Rabbit HRP, Secondary Antibody Dilution: 1:5000, Gene Name: CPT1A.

Biorbyt Ltd.

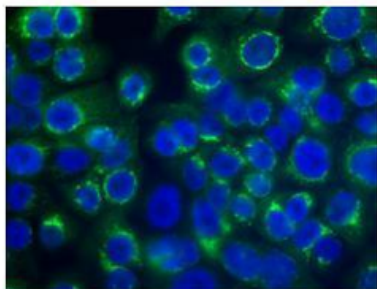
7 Signet Court, Swann Road
Cambridge
CB5 8LA
United Kingdom

Email: info@biorbyt.com, support@biorbyt.com
Phone: +44 (0)1223 859353 | Fax: +1 (415) 651-8558

Biorbyt LLC

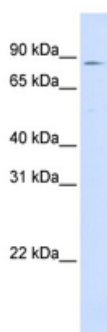
68 TW Alexander Drive
Research Triangle Park
Durham
NC 27713
United States

Email: info@biorbyt.com, support@biorbyt.com
Phone: +1 (415) 906-5211 | Fax: +1 (415) 651-8558

CPT1A

Green: CPT1A
Blue: DAPI

Sample Type: Human Capan1 cells (Pancreatic cancer cell line),
Primary Antibody Dilution: 1:300, Secondary Antibody: Anti-rabbit-AlexaFluor-488, Secondary Antibody Dilution: 1:200,
Color/Signal Descriptions: CPT1A: Green DAPI: Blue, Gene Name: CPT1A.



WB Suggested Anti-CPT1A Antibody Titration: 0.2-1 ug/ml, ELISA
Titer: 1:312500, Positive Control: 293T cell lysate.

Biorbyt Ltd.

7 Signet Court, Swann Road
Cambridge
CB5 8LA
United Kingdom

Email: info@biorbyt.com, support@biorbyt.com

Phone: [+44 \(0\)1223 859353](tel:+44(0)1223859353) | Fax: [+1 \(415\) 651-8558](tel:+1(415)651-8558)

Biorbyt LLC

68 TW Alexander Drive
Research Triangle Park
Durham
NC 27713
United States

Email: info@biorbyt.com, support@biorbyt.com

Phone: [+1 \(415\) 906-5211](tel:+1(415)906-5211) | Fax: [+1 \(415\) 651-8558](tel:+1(415)651-8558)