

## Product Datasheet

### UBE2M Rabbit Polyclonal Antibody (orb578688)

|                             |  |
|-----------------------------|--|
| <b>Catalog Number</b>       | orb578688  |
| <b>Category</b>             | Antibodies   |
| <b>Description</b>          | Rabbit polyclonal antibody to UBE2M  |
| <b>Target</b>               | UBE2M  |
| <b>Clonality</b>            | Polyclonal   |
| <b>Species/Host</b>         | Rabbit   |
| <b>Conjugation</b>          | Unconjugated   |
| <b>Reactivity</b>           | Human, Mouse   |
| <b>Predicted Reactivity</b> | Bovine, Canine, Equine, Guinea pig, Rabbit, Rat  |
| <b>Form/Appearance</b>      | Liquid. Purified antibody supplied in 1x PBS buffer with 0.09% (w/v) sodium azide and 2% sucrose.            |
| <b>Concentration</b>        | 0.5 mg/ml  |
| <b>Buffer/Preservatives</b> | Liquid. Purified antibody supplied in 1x PBS buffer with 0.09% (w/v) sodium azide and 2% sucrose.            |
| <b>Purification</b>         | Affinity Purified  |
| <b>Immunogen</b>            | The immunogen is a synthetic peptide directed towards the N terminal region of human UBE2M                   |
| <b>Protein Sequence</b>     | Synthetic peptide located within the following region:<br>IKLFSLKQQKKEEESAGGTKGSSKKASAAQLRIQKDINELNLPKTCDISF |
| <b>UniProt ID</b>           | <b>P61081</b>  |

**Biorbyt Ltd.**

7 Signet Court, Swann Road  
Cambridge  
CB5 8LA  
United Kingdom

Email: [info@biorbyt.com](mailto:info@biorbyt.com), [support@biorbyt.com](mailto:support@biorbyt.com)

Phone: [+44 \(0\)1223 859353](tel:+44(0)1223859353) | Fax: [+1 \(415\) 651-8558](tel:+1(415)651-8558)

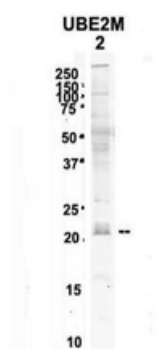
**Biorbyt LLC**

68 TW Alexander Drive  
Research Triangle Park  
Durham  
NC 27713-2847  
United States

Email: [info@biorbyt.com](mailto:info@biorbyt.com), [support@biorbyt.com](mailto:support@biorbyt.com)

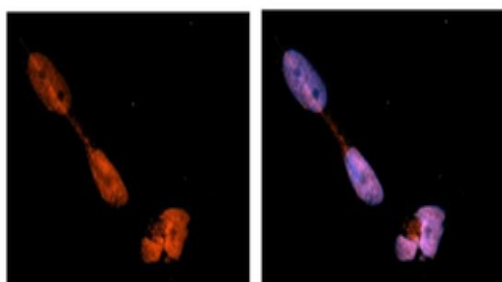
Phone: [+1 \(415\) 906-5211](tel:+1(415)906-5211) | Fax: [+1 \(415\) 651-8558](tel:+1(415)651-8558)

|                            |   |
|----------------------------|---|
| <b>MW</b>                  | 21kDa   |
| <b>Tested applications</b> | IHC, WB   |
| <b>Storage</b>             | Maintain refrigerated at 2-8°C for up to 2 weeks. For long term storage store at -20°C in small aliquots to prevent freeze-thaw cycles. |
| <b>Note</b>                | For research use only   |
| <b>NCBI</b>                | <b>NP_003960</b>  |
| <b>Expiration Date</b>     | 12 months from date of receipt.   |



Sample Type: 2. mouse brain extracts (80 ug), Primary Antibody Dilution: 2 ug/ml, Secondary Antibody: IRDye 800CW goat anti-rabbit, Secondary Antibody Dilution: 1:20000.

### UBE2M



Sample Type: NT2 cells, Red: Antibody, Blue: DAPI, Primary Dilution: 1 ug/50 ul antibody, Secondary Antibody: Alexa goat anti-rabbit 594.

#### **Biorbyt Ltd.**

7 Signet Court, Swann Road  
Cambridge  
CB5 8LA  
United Kingdom

Email: [info@biorbyt.com](mailto:info@biorbyt.com), [support@biorbyt.com](mailto:support@biorbyt.com)

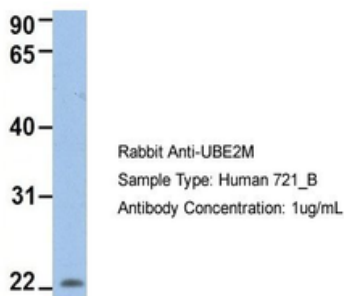
Phone: [+44 \(0\)1223 859353](tel:+44(0)1223859353) | Fax: [+1 \(415\) 651-8558](tel:+1(415)651-8558)

#### **Biorbyt LLC**

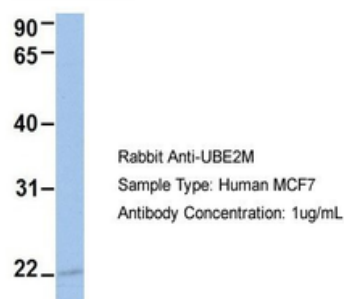
68 TW Alexander Drive  
Research Triangle Park  
Durham  
NC 27713-2847  
United States

Email: [info@biorbyt.com](mailto:info@biorbyt.com), [support@biorbyt.com](mailto:support@biorbyt.com)

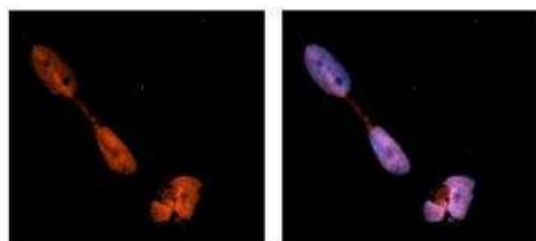
Phone: [+1 \(415\) 906-5211](tel:+1(415)906-5211) | Fax: [+1 \(415\) 651-8558](tel:+1(415)651-8558)

**UBE2M**

Sample Type: Human 721\_B, Antibody Dilution: 1.0 ug/ml.  
UBE2M is supported by BioGPS gene expression data to be expressed in 721\_B.

**UBE2M**

Sample Type: Human MCF7, Antibody Dilution: 1.0 ug/ml.  
UBE2M is supported by BioGPS gene expression data to be expressed in MCF7.

**UBE2M**

Antibody--RED  
DAPI--Blue

Sample Type: Human brain stem cells, Primary Antibody Dilution: 1:500, Secondary Antibody: Goat anti-rabbit Alexa-Fluor 594, Secondary Antibody Dilution: 1:1000, Color/Signal Descriptions: UBE2M: Red DAPI:Blue, Gene Name: UBE2M.

**Biorbyt Ltd.**

7 Signet Court, Swann Road  
Cambridge  
CB5 8LA  
United Kingdom

Email: [info@biorbyt.com](mailto:info@biorbyt.com), [support@biorbyt.com](mailto:support@biorbyt.com)

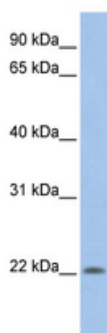
Phone: +44 (0)1223 859353 | Fax: +1 (415) 651-8558

**Biorbyt LLC**

68 TW Alexander Drive  
Research Triangle Park  
Durham  
NC 27713-2847  
United States

Email: [info@biorbyt.com](mailto:info@biorbyt.com), [support@biorbyt.com](mailto:support@biorbyt.com)

Phone: +1 (415) 906-5211 | Fax: +1 (415) 651-8558



WB Suggested Anti-UBE2M Antibody Titration: 0.2-1 ug/ml,  
Positive Control: 721\_B cell lysate. UBE2M is supported by  
BioGPS gene expression data to be expressed in 721\_B.

**Biorbyt Ltd.**

7 Signet Court, Swann Road  
Cambridge  
CB5 8LA  
United Kingdom

Email: [info@biorbyt.com](mailto:info@biorbyt.com), [support@biorbyt.com](mailto:support@biorbyt.com)

Phone: [+44 \(0\)1223 859353](tel:+44(0)1223859353) | Fax: [+1 \(415\) 651-8558](tel:+1(415)651-8558)

**Biorbyt LLC**

68 TW Alexander Drive  
Research Triangle Park  
Durham  
NC 27713-2847  
United States

Email: [info@biorbyt.com](mailto:info@biorbyt.com), [support@biorbyt.com](mailto:support@biorbyt.com)

Phone: [+1 \(415\) 906-5211](tel:+1(415)906-5211) | Fax: [+1 \(415\) 651-8558](tel:+1(415)651-8558)