

## Product Datasheet

### OCLN Rabbit Polyclonal Antibody (orb578638)

|                             |   |
|-----------------------------|---|
| <b>Catalog Number</b>       | orb578638   |
| <b>Category</b>             | Antibodies  |
| <b>Description</b>          | OCLN is an integral membrane protein which is located at tight junctions. This protein may be involved in the formation and maintenance of the tight junction. The possibility of several alternatively spliced products has been suggested but the full nature of these products has not been described. |
| <b>Target</b>               | OCLN  |
| <b>Clonality</b>            | Polyclonal  |
| <b>Species/Host</b>         | Rabbit  |
| <b>Conjugation</b>          | Unconjugated  |
| <b>Reactivity</b>           | Human, Rat  |
| <b>Predicted Reactivity</b> | Bovine, Canine, Equine, Guinea pig, Mouse, Rabbit, Zebrafish  |
| <b>Form/Appearance</b>      | Liquid. Purified antibody supplied in 1x PBS buffer with 0.09% (w/v) sodium azide and 2% sucrose.   |
| <b>Concentration</b>        | 0.5 mg/ml   |
| <b>Buffer/Preservatives</b> | Liquid. Purified antibody supplied in 1x PBS buffer with 0.09% (w/v) sodium azide and 2% sucrose.   |
| <b>Purification</b>         | Affinity Purified   |
| <b>Immunogen</b>            | The immunogen is a synthetic peptide directed towards the N terminal region of human OCLN   |

**Biorbyt Ltd.**

7 Signet Court, Swann Road  
Cambridge  
CB5 8LA  
United Kingdom

Email: [info@biorbyt.com](mailto:info@biorbyt.com), [support@biorbyt.com](mailto:support@biorbyt.com)

Phone: [+44 \(0\)1223 859353](tel:+44(0)1223859353) | Fax: [+1 \(415\) 651-8558](tel:+1(415)651-8558)

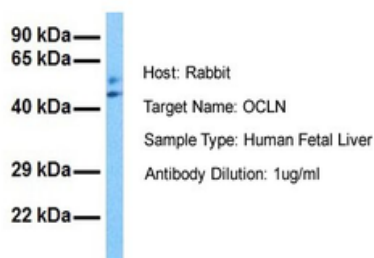
**Biorbyt LLC**

68 TW Alexander Drive  
Research Triangle Park  
Durham  
NC 27713-2847  
United States

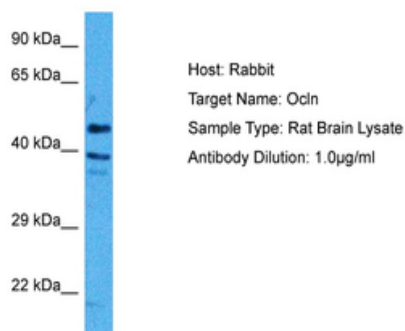
Email: [info@biorbyt.com](mailto:info@biorbyt.com), [support@biorbyt.com](mailto:support@biorbyt.com)

Phone: [+1 \(415\) 906-5211](tel:+1(415)906-5211) | Fax: [+1 \(415\) 651-8558](tel:+1(415)651-8558)

|                            |   |
|----------------------------|---|
| <b>Protein Sequence</b>    | Synthetic peptide located within the following region:<br>VRPMLSQPAYSFYPEDEILHFYKWTSPPGVIRILSMLIIVMCIAIFACVA                            |
| <b>UniProt ID</b>          | <b>Q16625</b>   |
| <b>MW</b>                  | 59kDa   |
| <b>Tested applications</b> | WB  |
| <b>Storage</b>             | Maintain refrigerated at 2-8°C for up to 2 weeks. For long term storage store at -20°C in small aliquots to prevent freeze-thaw cycles. |
| <b>Note</b>                | For research use only   |
| <b>NCBI</b>                | <b>NP_002529</b>  |
| <b>Expiration Date</b>     | 12 months from date of receipt.   |

**OCNLN**

Sample Tissue: Human Fetal Liver, Antibody Dilution: 1.0 ug/ml.



Sample Tissue: Rat Brain, Antibody Dilution: 1 ug/ml.

**Biorbyt Ltd.**

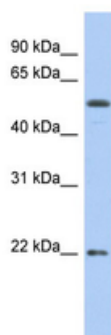
7 Signet Court, Swann Road  
Cambridge  
CB5 8LA  
United Kingdom

Email: [info@biorbyt.com](mailto:info@biorbyt.com), [support@biorbyt.com](mailto:support@biorbyt.com)  
Phone: +44 (0)1223 859353 | Fax: +1 (415) 651-8558

**Biorbyt LLC**

68 TW Alexander Drive  
Research Triangle Park  
Durham  
NC 27713-2847  
United States

Email: [info@biorbyt.com](mailto:info@biorbyt.com), [support@biorbyt.com](mailto:support@biorbyt.com)  
Phone: +1 (415) 906-5211 | Fax: +1 (415) 651-8558



WB Suggested Anti-OCLN Antibody Titration: 0.2-1 ug/ml, ELISA  
Titer: 1:312500, Positive Control: COLO205 cell lysate.

**Biorbyt Ltd.**

7 Signet Court, Swann Road  
Cambridge  
CB5 8LA  
United Kingdom

Email: [info@biorbyt.com](mailto:info@biorbyt.com), [support@biorbyt.com](mailto:support@biorbyt.com)

Phone: [+44 \(0\)1223 859353](tel:+44(0)1223859353) | Fax: [+1 \(415\) 651-8558](tel:+1(415)6518558)

**Biorbyt LLC**

68 TW Alexander Drive  
Research Triangle Park  
Durham  
NC 27713-2847  
United States

Email: [info@biorbyt.com](mailto:info@biorbyt.com), [support@biorbyt.com](mailto:support@biorbyt.com)

Phone: [+1 \(415\) 906-5211](tel:+1(415)9065211) | Fax: [+1 \(415\) 651-8558](tel:+1(415)6518558)