

Product Datasheet

MMP1 Rabbit Polyclonal Antibody (orb578315)

Catalog Number	orb578315
Category	Antibodies
Description	Rabbit polyclonal antibody to MMP1
Target	MMP1
Clonality	Polyclonal
Species/Host	Rabbit
Conjugation	Unconjugated
Reactivity	Equine, Human
Predicted Reactivity	Animal, Human
Form/Appearance	Liquid. Purified antibody supplied in 1x PBS buffer with 0.09% (w/v) sodium azide and 2% sucrose.
Concentration	1.0 mg/ml
Buffer/Preservatives	Liquid. Purified antibody supplied in 1x PBS buffer with 0.09% (w/v) sodium azide and 2% sucrose.
Purification	Protein A purified
Immunogen	The immunogen is a synthetic peptide directed towards the N terminal region of human MMP1
Protein Sequence	Synthetic peptide located within the following region: PATLETQEQQVDLVQKYLEKYNNLKNDRQVEKRRNSGPPVVEKLKQMDEF
UniProt ID	P03956

Biorbyt Ltd.

7 Signet Court, Swann Road
Cambridge
CB5 8LA
United Kingdom

Email: info@biorbyt.com, support@biorbyt.com

Phone: [+44 \(0\)1223 859353](tel:+44(0)1223859353) | Fax: [+1 \(415\) 651-8558](tel:+1(415)651-8558)

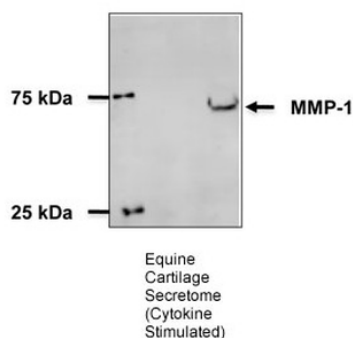
Biorbyt LLC

68 TW Alexander Drive
Research Triangle Park
Durham
NC 27713
United States

Email: info@biorbyt.com, support@biorbyt.com

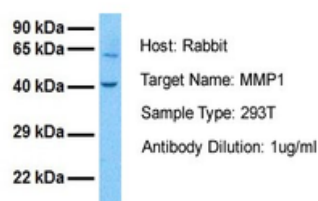
Phone: [+1 \(415\) 906-5211](tel:+1(415)906-5211) | Fax: [+1 \(415\) 651-8558](tel:+1(415)651-8558)

MW	54kDa
Tested applications	IHC, WB
Storage	Maintain refrigerated at 2-8°C for up to 2 weeks. For long term storage store at -20°C in small aliquots to prevent freeze-thaw cycles.
Note	For research use only
NCBI	NP_002412
Expiration Date	12 months from date of receipt.



Sample Type: Equine Cartilage Explants, Primary Dilution: 1:800.

MMP1



Sample Tissue: Human 293T, Antibody Dilution: 1.0 ug/ml.

Biorbyt Ltd.

7 Signet Court, Swann Road
Cambridge
CB5 8LA
United Kingdom

Email: info@biorbyt.com, support@biorbyt.com

Phone: [+44 \(0\)1223 859353](tel:+44(0)1223859353) | Fax: [+1 \(415\) 651-8558](tel:+1(415)651-8558)

Biorbyt LLC

68 TW Alexander Drive
Research Triangle Park
Durham
NC 27713
United States

Email: info@biorbyt.com, support@biorbyt.com

Phone: [+1 \(415\) 906-5211](tel:+1(415)906-5211) | Fax: [+1 \(415\) 651-8558](tel:+1(415)651-8558)

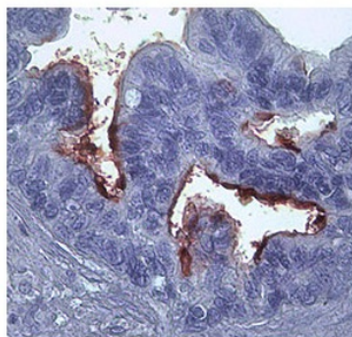
MMP-1

Human colorectal cancer sample

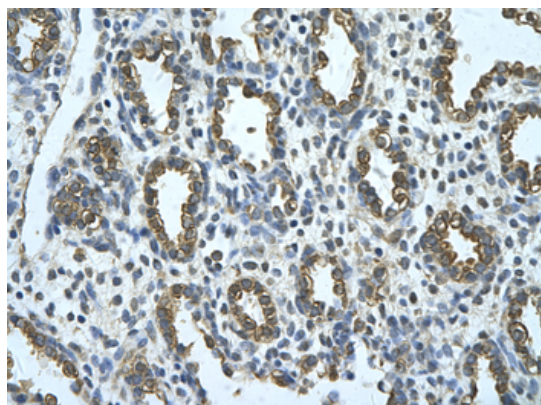
Brown: Primary antibody
Blue: DAPI

Human liver sample

Human Colorectal cancer sample, Human Liver Sample.



MMP1 in epithelial cells ovarian carcinoma was detected using HRP/DAB brown color stain. Antibody Titration: 2-10 ug/ml, Positive Control: Human epithelial cells ovarian carcinoma.



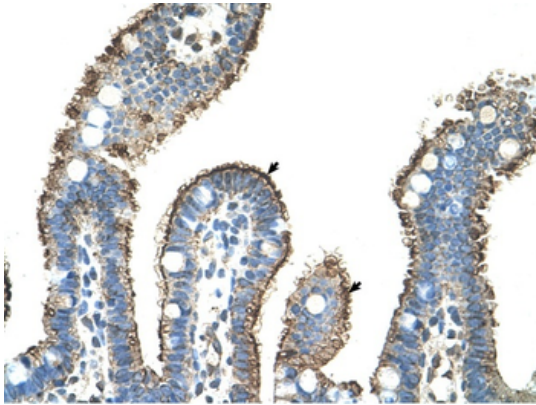
Rabbit Anti-MMP1 Antibody, Paraffin Embedded Tissue: Human alveolar cell, Cellular Data: Epithelial cells of renal tubule, Antibody Concentration: 4.0-8.0 ug/ml, Magnification: 400X.

Biorbyt Ltd.7 Signet Court, Swann Road
Cambridge
CB5 8LA
United KingdomEmail: info@biorbyt.com, support@biorbyt.com

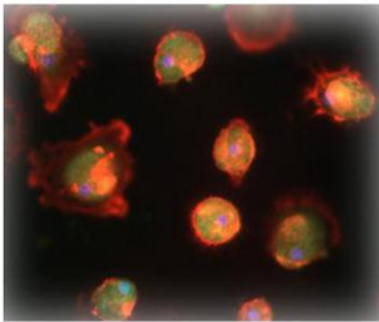
Phone: +44 (0)1223 859353 | Fax: +1 (415) 651-8558

Biorbyt LLC68 TW Alexander Drive
Research Triangle Park
Durham
NC 27713
United StatesEmail: info@biorbyt.com, support@biorbyt.com

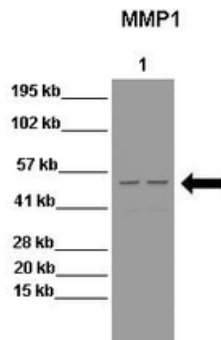
Phone: +1 (415) 906-5211 | Fax: +1 (415) 651-8558



Rabbit Anti-MMP1 Antibody, Paraffin Embedded Tissue: Human Intestine, Cellular Data: Epithelial cells of intestinal villas, Antibody Concentration: 4.0-8.0 ug/ml, Magnification: 400X.

MMP1

species sample: Human, cell/tissue: macrophages Human macrophages, Dilution: 1/200.



WB Suggested Anti-MMP1 Antibody, Positive Control: Lane 1: 15 ug HT29 cell lysate. Lane 2: 15 ug HT29 cell lysate. Primary Antibody Dilution: 1:500, Secondary Antibody: Anti-rabbit-HRP, Secondary Antibody Dilution: 1:2000.

Biorbyt Ltd.

7 Signet Court, Swann Road
Cambridge
CB5 8LA
United Kingdom

Email: info@biorbyt.com, support@biorbyt.com

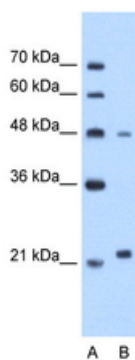
Phone: +44 (0)1223 859353 | Fax: +1 (415) 651-8558

Biorbyt LLC

68 TW Alexander Drive
Research Triangle Park
Durham
NC 27713
United States

Email: info@biorbyt.com, support@biorbyt.com

Phone: +1 (415) 906-5211 | Fax: +1 (415) 651-8558



WB Suggested Anti-MMP1 Antibody Titration: 1.25 ug/ml,
Positive Control: Jurkat cell lysate.

Biorbyt Ltd.

7 Signet Court, Swann Road
Cambridge
CB5 8LA
United Kingdom

Email: info@biorbyt.com, support@biorbyt.com

Phone: [+44 \(0\)1223 859353](tel:+44(0)1223859353) | Fax: [+1 \(415\) 651-8558](tel:+1(415)651-8558)

Biorbyt LLC

68 TW Alexander Drive
Research Triangle Park
Durham
NC 27713
United States

Email: info@biorbyt.com, support@biorbyt.com

Phone: [+1 \(415\) 906-5211](tel:+1(415)906-5211) | Fax: [+1 \(415\) 651-8558](tel:+1(415)651-8558)