

Product Datasheet

FGF2 Rabbit Polyclonal Antibody (orb578305)

| | |
|-----------------------------|--|
| Catalog Number | orb578305 |
| Category | Antibodies |
| Description | Rabbit polyclonal antibody to FGF2 |
| Target | FGF2 |
| Clonality | Polyclonal |
| Species/Host | Rabbit |
| Conjugation | Unconjugated |
| Reactivity | Human, Mouse |
| Predicted Reactivity | Bovine, Canine, Equine, Guinea pig, Rabbit, Rat, Sheep, Zebrafish |
| Form/Appearance | Liquid. Purified antibody supplied in 1x PBS buffer with 0.09% (w/v) sodium azide and 2% sucrose. |
| Concentration | 0.5 mg/ml |
| Buffer/Preservatives | Liquid. Purified antibody supplied in 1x PBS buffer with 0.09% (w/v) sodium azide and 2% sucrose. |
| Purification | Affinity Purified |
| Immunogen | The immunogen is a synthetic peptide directed towards the middle region of human FGF2 |
| Protein Sequence | Synthetic peptide located within the following region: RLESNNYNTYRSRKYTSWYVALKRTGQYKLGSKTGPGQKAILFLPMSAKS |
| UniProt ID | P09038 |

Biorbyt Ltd.

7 Signet Court, Swann Road
Cambridge
CB5 8LA
United Kingdom

Email: info@biorbyt.com, support@biorbyt.com

Phone: [+44 \(0\)1223 859353](tel:+44(0)1223859353) | Fax: [+1 \(415\) 651-8558](tel:+1(415)651-8558)

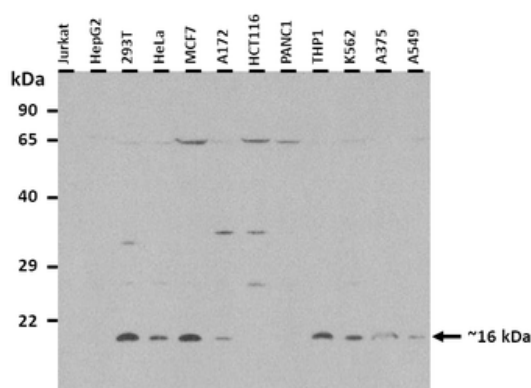
Biorbyt LLC

68 TW Alexander Drive
Research Triangle Park
Durham
NC 27713-2847
United States

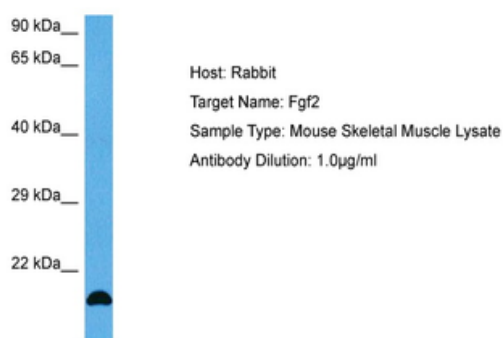
Email: info@biorbyt.com, support@biorbyt.com

Phone: [+1 \(415\) 906-5211](tel:+1(415)906-5211) | Fax: [+1 \(415\) 651-8558](tel:+1(415)651-8558)

| | |
|----------------------------|---|
| MW | 31 kDa |
| Tested applications | IHC, WB |
| Storage | Maintain refrigerated at 2-8°C for up to 2 weeks. For long term storage store at -20°C in small aliquots to prevent freeze-thaw cycles. |
| Note | For research use only |
| NCBI | NP_001997 |
| Expiration Date | 12 months from date of receipt. |



25 ug of the indicated Human whole cell extracts was loaded onto a 12% SDS-PAGE gel. 1 ug/ml of the antibody was used in this experiment. The peptide is present in isoforms of 31, 23, 21 and 17 kDa. The protein is processed to 16 kDa mature form, and the protein may be modified via methylation, phosphorylation and/or sumoylation.



Sample Tissue: Mouse Skeletal Muscle, Antibody Dilution: 1 ug/ml.

Biorbyt Ltd.

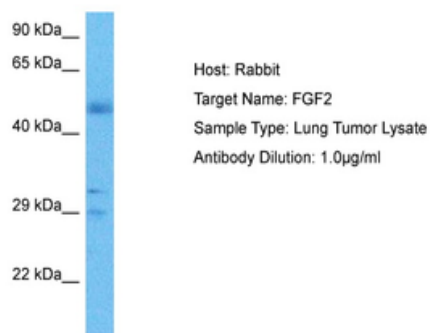
7 Signet Court, Swann Road
 Cambridge
 CB5 8LA
 United Kingdom

Email: info@biorbyt.com, support@biorbyt.com
 Phone: +44 (0)1223 859353 | Fax: +1 (415) 651-8558

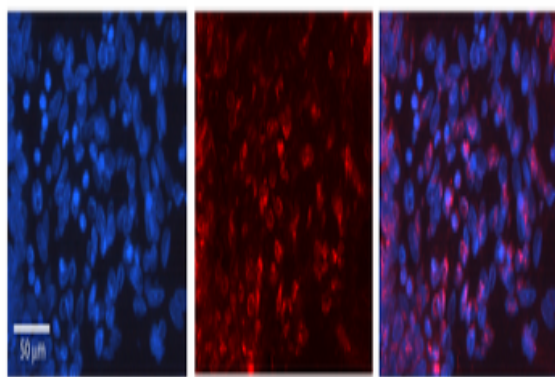
Biorbyt LLC

68 TW Alexander Drive
 Research Triangle Park
 Durham
 NC 27713-2847
 United States

Email: info@biorbyt.com, support@biorbyt.com
 Phone: +1 (415) 906-5211 | Fax: +1 (415) 651-8558

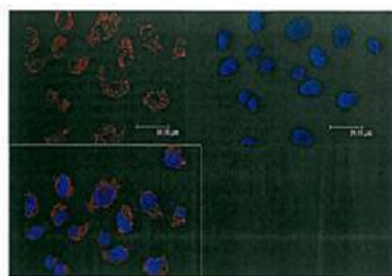


Sample Tissue: Human Lung Tumor, Antibody Dilution: 1 µg/ml.



Rabbit Anti-FGF2 Antibody, Catalog Number: orb578305,
Formalin Fixed Paraffin Embedded Tissue: Human Ovary Tissue,
Observed Staining: Nucleus, Primary Antibody Concentration:
1:600, Other Working Concentrations: N/A, Secondary Antibody:
Donkey anti-Rabbit-Cy3, Secondary Antibody Concentration:
1:200, Magnification: 20X, Exposure Time: 0.5-2.0 sec.

FGF2



Red: FGF2 Blue: Nuclei

Sample Type: Human A375 cells, Primary Antibody Dilution:
1:100, Secondary Antibody: Anti-rabbit-Alexa-546, Secondary
Antibody Dilution: 1:100, Color/Signal Descriptions: Red: FGF2
Blue: Nuclei, Gene Name: FGF2.

Biorbyt Ltd.

7 Signet Court, Swann Road
Cambridge
CB5 8LA
United Kingdom

Email: info@biorbyt.com, support@biorbyt.com

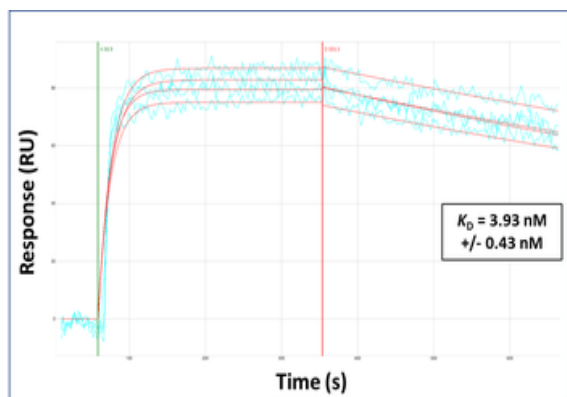
Phone: +44 (0)1223 859353 | Fax: +1 (415) 651-8558

Biorbyt LLC

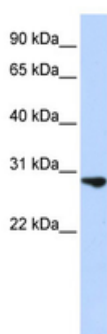
68 TW Alexander Drive
Research Triangle Park
Durham
NC 27713-2847
United States

Email: info@biorbyt.com, support@biorbyt.com

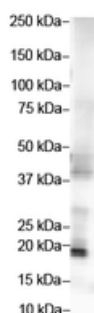
Phone: +1 (415) 906-5211 | Fax: +1 (415) 651-8558



Surface Plasmon Resonance Kinetic Characterization of Polyclonal Antibody Affinity. Purified polyclonal antibodies were immobilized on a Protein A/G coated Carterra LSA sensor chip (PAGH200M) at concentrations of 5, and 50 ug/ml in duplicate. Antibodies on the surface were exposed to interaction with peptides sequentially via microfluidic controlled flow at 333nM peptide concentration for kinetic characterization of the binders for affinity and specificity, followed by curve fitting using the Kinetics software. K_d determinations for both concentrations were averaged and results and standard deviation are shown.



WB Suggested Anti-FGF2 Antibody Titration: 0.2-1 ug/ml, ELISA Titer: 1:312500, Positive Control: Jurkat cell lysate.



Host: Rabbit
Target Name: FGF2
Sample Type: Hela Cell
Antibody Dilution: 2.0 ug/ml

WB Suggested Anti-FGF2 Antibody Titration: 2 ug/ml, ELISA Titer: 1:312500, Positive Control: Hela cell lysate.

Biorbyt Ltd.

7 Signet Court, Swann Road
Cambridge
CB5 8LA
United Kingdom

Email: info@biorbyt.com, support@biorbyt.com
Phone: +44 (0)1223 859353 | Fax: +1 (415) 651-8558

Biorbyt LLC

68 TW Alexander Drive
Research Triangle Park
Durham
NC 27713-2847
United States

Email: info@biorbyt.com, support@biorbyt.com
Phone: +1 (415) 906-5211 | Fax: +1 (415) 651-8558