

Product Datasheet

CPSF6 Rabbit Polyclonal Antibody (orb577736)

Catalog Number	orb577736
Category	Antibodies
Description	Rabbit polyclonal antibody to CPSF6
Target	CPSF6
Clonality	Polyclonal
Species/Host	Rabbit
Conjugation	Unconjugated
Reactivity	Human
Predicted Reactivity	Bovine, Canine, Equine, Guinea pig, Mouse, Rabbit, Rat, Zebrafish
Form/Appearance	Liquid. Purified antibody supplied in 1x PBS buffer with 0.09% (w/v) sodium azide and 2% sucrose.
Concentration	1.0 mg/ml
Buffer/Preservatives	Liquid. Purified antibody supplied in 1x PBS buffer with 0.09% (w/v) sodium azide and 2% sucrose.
Purification	Protein A purified
Immunogen	The immunogen is a synthetic peptide directed towards the middle region of human CPSF6
Protein Sequence	Synthetic peptide located within the following region: PPLAGPPNRGDRPPPPVLFPGQPFQPPPLGPLPPGPPPPVPGYGGPPGPP
UniProt ID	Q16630

Biorbyt Ltd.

7 Signet Court, Swann Road
Cambridge
CB5 8LA
United Kingdom

Email: info@biorbyt.com, support@biorbyt.com

Phone: [+44 \(0\)1223 859353](tel:+44(0)1223859353) | Fax: [+1 \(415\) 651-8558](tel:+1(415)651-8558)

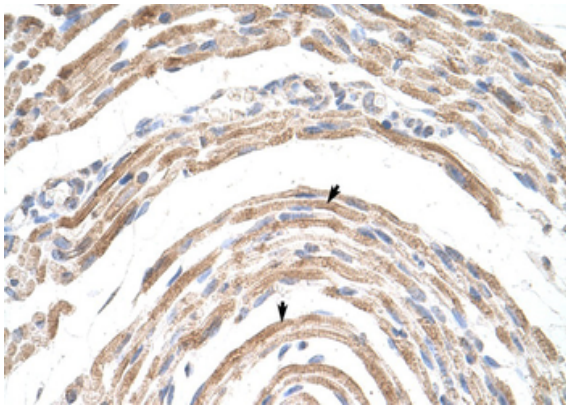
Biorbyt LLC

68 TW Alexander Drive
Research Triangle Park
Durham
NC 27713
United States

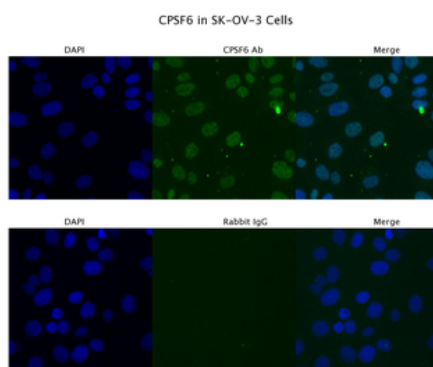
Email: info@biorbyt.com, support@biorbyt.com

Phone: [+1 \(415\) 906-5211](tel:+1(415)906-5211) | Fax: [+1 \(415\) 651-8558](tel:+1(415)651-8558)

MW	61kDa
Tested applications	IF, IHC, WB
Storage	Maintain refrigerated at 2-8°C for up to 2 weeks. For long term storage store at -20°C in small aliquots to prevent freeze-thaw cycles.
Note	For research use only
NCBI	NP_008938
Expiration Date	12 months from date of receipt.



Rabbit Anti-CPSF6 Antibody, Paraffin Embedded Tissue: Human Muscle, Cellular Data: Skeletal muscle cells, Antibody Concentration: 16.0 ug/ml, Magnification: 400X.



Sample Type: SKOV3, Primary Antibody Dilution: 4 ug/ml, Secondary Antibody: Anti-rabbit Alexa 546, Secondary Antibody Dilution: 2 ug/ml, Gene Name: CPSF6.

Biorbyt Ltd.

7 Signet Court, Swann Road
Cambridge
CB5 8LA
United Kingdom

Email: info@biorbyt.com, support@biorbyt.com

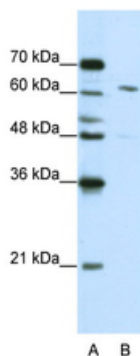
Phone: +44 (0)1223 859353 | Fax: +1 (415) 651-8558

Biorbyt LLC

68 TW Alexander Drive
Research Triangle Park
Durham
NC 27713
United States

Email: info@biorbyt.com, support@biorbyt.com

Phone: +1 (415) 906-5211 | Fax: +1 (415) 651-8558



WB Suggested Anti-CPSF6 Antibody Titration: 0.3125 ug/ml,
ELISA Titer: 1:1562500, Positive Control: Jurkat cell lysate.
CPSF6 is strongly supported by BioGPS gene expression data to
be expressed in Human Jurkat cells.

Biorbyt Ltd.

7 Signet Court, Swann Road
Cambridge
CB5 8LA
United Kingdom

Email: info@biorbyt.com, support@biorbyt.com

Phone: [+44 \(0\)1223 859353](tel:+44(0)1223859353) | Fax: [+1 \(415\) 651-8558](tel:+1(415)651-8558)

Biorbyt LLC

68 TW Alexander Drive
Research Triangle Park
Durham
NC 27713
United States

Email: info@biorbyt.com, support@biorbyt.com

Phone: [+1 \(415\) 906-5211](tel:+1(415)906-5211) | Fax: [+1 \(415\) 651-8558](tel:+1(415)651-8558)