

Product Datasheet

ACTB Rabbit Polyclonal Antibody (orb577463)

Catalog Number	orb577463
Category	Antibodies
Description	Rabbit polyclonal antibody to ACTB
Target	ACTB
Clonality	Polyclonal
Species/Host	Rabbit
Conjugation	Unconjugated
Reactivity	Human, Mouse
Predicted Reactivity	Bovine, Equine, Goat, Porcine, Rat, Sheep, Zebrafish
Form/Appearance	Liquid. Purified antibody supplied in 1x PBS buffer with 0.09% (w/v) sodium azide and 2% sucrose.
Concentration	0.5 mg/ml
Buffer/Preservatives	Liquid. Purified antibody supplied in 1x PBS buffer with 0.09% (w/v) sodium azide and 2% sucrose.
Purification	Affinity Purified
Immunogen	The immunogen is a synthetic peptide directed towards the middle region of Human ACTB
Protein Sequence	Synthetic peptide located within the following region: TMKIKIIPPERKYSVWIGGSILASLSTFQQMWISKQEYDESGPSIVHRK
UniProt ID	P60709

Biorbyt Ltd.

7 Signet Court, Swann Road
Cambridge
CB5 8LA
United Kingdom

Email: info@biorbyt.com, support@biorbyt.com

Phone: [+44 \(0\)1223 859353](tel:+44(0)1223859353) | Fax: [+1 \(415\) 651-8558](tel:+1(415)651-8558)

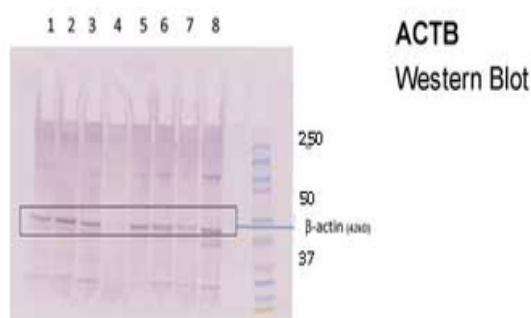
Biorbyt LLC

68 TW Alexander Drive
Research Triangle Park
Durham
NC 27713
United States

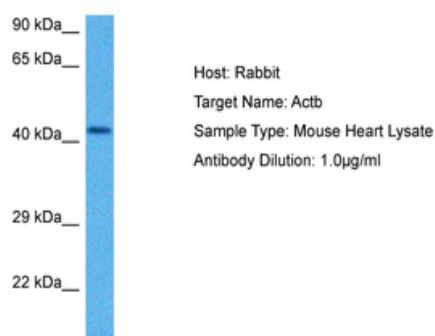
Email: info@biorbyt.com, support@biorbyt.com

Phone: [+1 \(415\) 906-5211](tel:+1(415)906-5211) | Fax: [+1 \(415\) 651-8558](tel:+1(415)651-8558)

MW	42kDa
Tested applications	IHC, WB
Storage	Maintain refrigerated at 2-8°C for up to 2 weeks. For long term storage store at -20°C in small aliquots to prevent freeze-thaw cycles.
Note	For research use only
NCBI	NP_001092
Expiration Date	12 months from date of receipt.



1. The sample 1 - 8 is used N2 wild type C. elegans. 2. Each lane contain 60 ug of sample and the loading volume is 36 ul. 3. The number 1 sample is a control without any treatment. 4. As I get 50 ug of primary Ab, I diluted with 50 ul of water. I use 5 ul each time in 10 ml of 5% milk in PBST buffer. 5. The secondary antibody for chemiluminescence is Peroxidase-AffiniPure Goat Anti-Rabbit IgG (H+L); for the chromogenic detection, I used goat anti-rabbit IgG-Ap (sc-2007).



Sample Tissue: Mouse Heart, Antibody Dilution: 1 ug/ml.

Biorbyt Ltd.

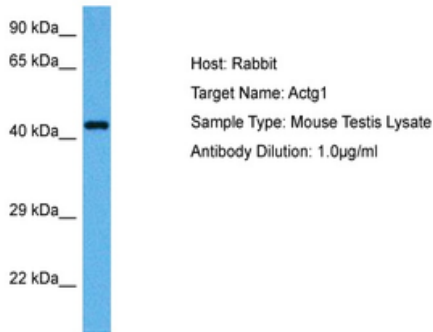
7 Signet Court, Swann Road
Cambridge
CB5 8LA
United Kingdom

Email: info@biorbyt.com, support@biorbyt.com
Phone: [+44 \(0\)1223 859353](tel:+44(0)1223859353) | Fax: [+1 \(415\) 651-8558](tel:+1(415)651-8558)

Biorbyt LLC

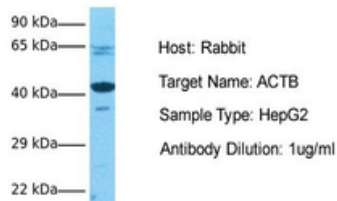
68 TW Alexander Drive
Research Triangle Park
Durham
NC 27713
United States

Email: info@biorbyt.com, support@biorbyt.com
Phone: [+1 \(415\) 906-5211](tel:+1(415)906-5211) | Fax: [+1 \(415\) 651-8558](tel:+1(415)651-8558)

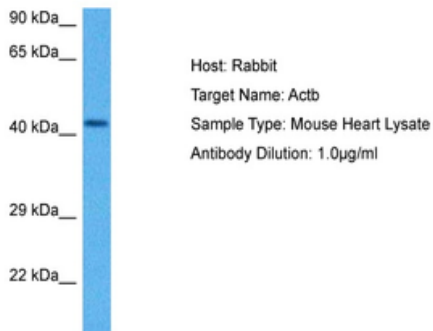


Sample Tissue: Mouse Testis, Antibody Dilution: 1 ug/ml.

ACTB



Sample Tissue: Human HepG2, Antibody Dilution: 1.0 ug/ml.



Sample Tissue: Mouse Heart, Antibody Dilution: 1 ug/ml.

Biorbyt Ltd.

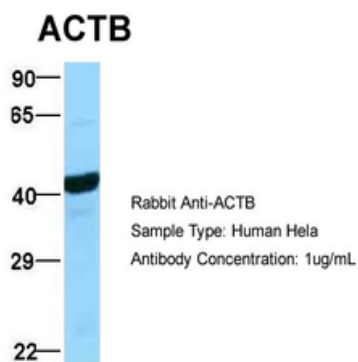
7 Signet Court, Swann Road
Cambridge
CB5 8LA
United Kingdom

Email: info@biorbyt.com, support@biorbyt.com
Phone: +44 (0)1223 859353 | Fax: +1 (415) 651-8558

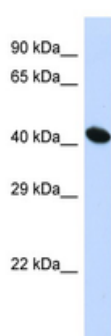
Biorbyt LLC

68 TW Alexander Drive
Research Triangle Park
Durham
NC 27713
United States

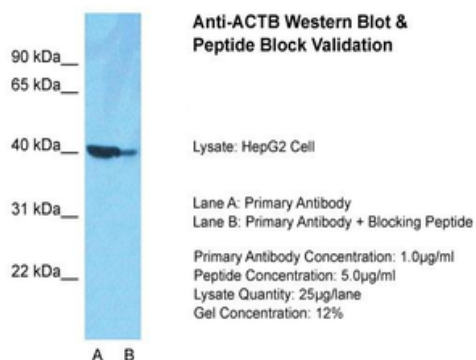
Email: info@biorbyt.com, support@biorbyt.com
Phone: +1 (415) 906-5211 | Fax: +1 (415) 651-8558



Sample Type: HeLa, Antibody Dilution: 1.0 ug/ml. ACTB is strongly supported by BioGPS gene expression data to be expressed in Human HeLa cells.



Sample Type: HepG2 Whole Cell lysates, Antibody Dilution: 1.0 ug/ml. ACTB is strongly supported by BioGPS gene expression data to be expressed in HepG2.



Sample Type: HepG2, Lane A: Primary Antibody, Lane B: Primary Antibody + Blocking Peptide, Primary Antibody Concentration: 1 ug/ml, Peptide Concentration: 5.0 ug/ml, Lysate Quantity: 25 ug/lane/lane, Gel Concentration: 12%.

Biorbyt Ltd.

7 Signet Court, Swann Road
Cambridge
CB5 8LA
United Kingdom

Email: info@biorbyt.com, support@biorbyt.com

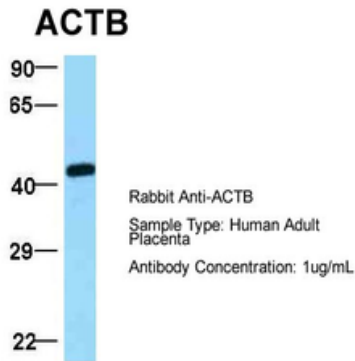
Phone: [+44 \(0\)1223 859353](tel:+44(0)1223859353) | Fax: [+1 \(415\) 651-8558](tel:+1(415)651-8558)

Biorbyt LLC

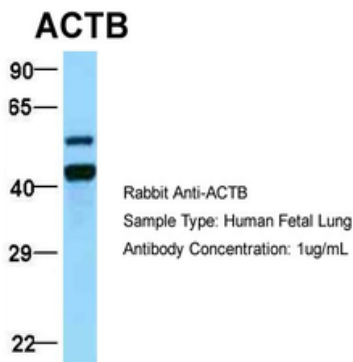
68 TW Alexander Drive
Research Triangle Park
Durham
NC 27713
United States

Email: info@biorbyt.com, support@biorbyt.com

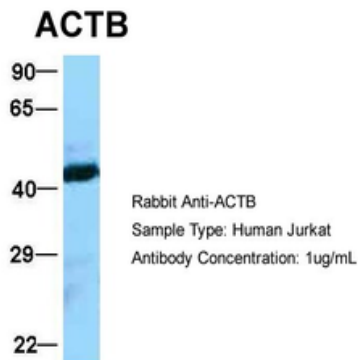
Phone: [+1 \(415\) 906-5211](tel:+1(415)906-5211) | Fax: [+1 \(415\) 651-8558](tel:+1(415)651-8558)



Sample Type: Human Adult Placenta, Antibody Dilution: 1.0 ug/ml.



Sample Type: Human Fetal Lung, Antibody Dilution: 1.0 ug/ml.



Sample Type: Jurkat, Antibody Dilution: 1.0 ug/ml. ACTB is strongly supported by BioGPS gene expression data to be expressed in Jurkat.

Biorbyt Ltd.

7 Signet Court, Swann Road
Cambridge
CB5 8LA
United Kingdom

Email: info@biorbyt.com, support@biorbyt.com

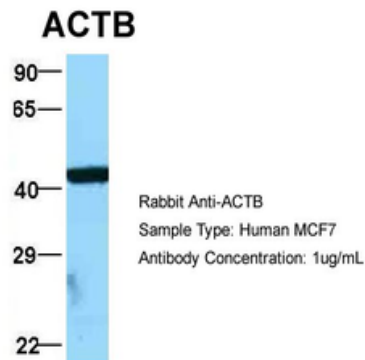
Phone: [+44 \(0\)1223 859353](tel:+44(0)1223859353) | Fax: [+1 \(415\) 651-8558](tel:+1(415)651-8558)

Biorbyt LLC

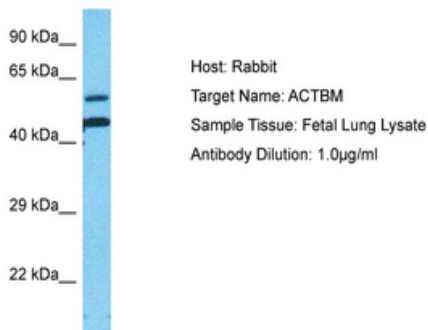
68 TW Alexander Drive
Research Triangle Park
Durham
NC 27713
United States

Email: info@biorbyt.com, support@biorbyt.com

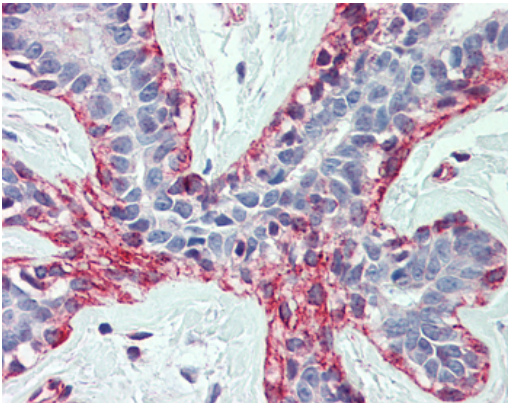
Phone: [+1 \(415\) 906-5211](tel:+1(415)906-5211) | Fax: [+1 \(415\) 651-8558](tel:+1(415)651-8558)



Sample Type: MCF7, Antibody Dilution: 1.0 ug/ml. ACTB is strongly supported by BioGPS gene expression data to be expressed in MCF7.



Sample Type: Fetal Lung lysates, Antibody Dilution: 1 ug/ml.



IHC Information: Paraffin embedded breast tissue, tested with an antibody dilution of 5 ug/ml.

Biorbyt Ltd.

7 Signet Court, Swann Road
Cambridge
CB5 8LA
United Kingdom

Email: info@biorbyt.com, support@biorbyt.com

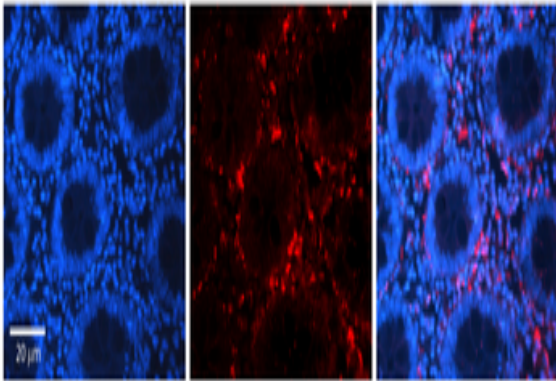
Phone: +44 (0)1223 859353 | Fax: +1 (415) 651-8558

Biorbyt LLC

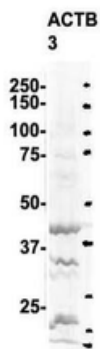
68 TW Alexander Drive
Research Triangle Park
Durham
NC 27713
United States

Email: info@biorbyt.com, support@biorbyt.com

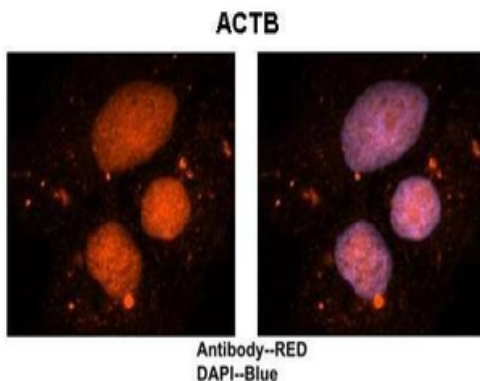
Phone: +1 (415) 906-5211 | Fax: +1 (415) 651-8558



Rabbit Anti-ACTB Antibody, Catalog Number: orb577463, Formalin Fixed Paraffin Embedded Tissue: Human Appendix (Colon) Tissue, Observed Staining: Cytoplasm, Primary Antibody Concentration: 1:100, Other Working Concentrations: N/A, Secondary Antibody: Donkey anti-Rabbit-Cy3, Secondary Antibody Concentration: 1:200, Magnification: 20X, Exposure Time: 0.5-2.0 sec.



Sample type: 1-8.N2 WT C elegans (60 ug), Primary Dilution: 1:2000, Secondary Antibody: goat anti-Rabbit HRP, Secondary Dilution: 1:2000.



Sample Type: Human brain stem cells, Primary Antibody Dilution: 1:500, Secondary Antibody: Goat anti-rabbit Alexa-Fluor 594, Secondary Antibody Dilution: 1:1000, Color/Signal Descriptions: ACTB: Red DAPI:Blue, Gene Name: ACTB.

Biorbyt Ltd.

7 Signet Court, Swann Road
Cambridge
CB5 8LA
United Kingdom

Email: info@biorbyt.com, support@biorbyt.com

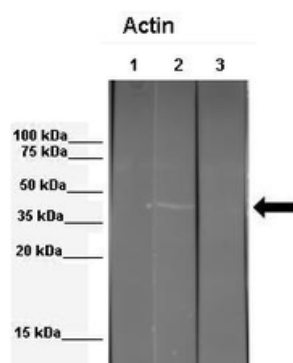
Phone: +44 (0)1223 859353 | Fax: +1 (415) 651-8558

Biorbyt LLC

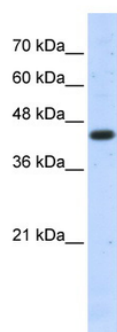
68 TW Alexander Drive
Research Triangle Park
Durham
NC 27713
United States

Email: info@biorbyt.com, support@biorbyt.com

Phone: +1 (415) 906-5211 | Fax: +1 (415) 651-8558



WB Suggested Anti-ACTB Antibody, Positive Control: Lane 1: 30 ug mouse 3T3 ECM extract + blocking peptide, Lane 2: 30 ug mouse 3T3 ECM extract, Lane 3: 30 ug Echinococcus granulosus extract, Primary Antibody Dilution: 1:300, Secondary Antibody: Anti-rabbit-HRP, Secondary Antibody Dilution: 1:10000.



WB Suggested Anti-ACTB Antibody Titration: 0.2-1 ug/ml ELISA Titer: 1:62500 Positive Control: Transfected 293T.

Biorbyt Ltd.

7 Signet Court, Swann Road
Cambridge
CB5 8LA
United Kingdom

Email: info@biorbyt.com, support@biorbyt.com

Phone: +44 (0)1223 859353 | Fax: +1 (415) 651-8558

Biorbyt LLC

68 TW Alexander Drive
Research Triangle Park
Durham
NC 27713
United States

Email: info@biorbyt.com, support@biorbyt.com

Phone: +1 (415) 906-5211 | Fax: +1 (415) 651-8558