

Product Datasheet

Rat CGRP ELISA Kit (orb566899)

Catalog Number	orb566899
Category	Assays and Kits
Description	Rat CGRP ELISA Kit
Target	Calcitonin Receptor-Like Receptor 1 (CALCR)
Reactivity	Rat
UniProt ID	P10093
Assay Type	Sandwich
Assay Time	4 hours
Range	15.6-1000pg/ml
Sensitivity	9.375pg/ml
Sample Types	Serum, Plasma, Cell Culture Supernatant, Cell or tissue lysate, Other liquid samples
Storage	2 - 8 °C for 12 months
Note	For research use only
Expiration Date	6 months from date of receipt.

Biorbyt Ltd.

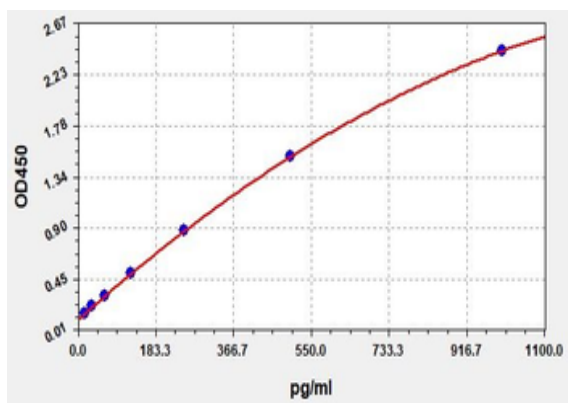
7 Signet Court, Swann Road
Cambridge
CB5 8LA
United Kingdom

Email: info@biorbyt.com, support@biorbyt.com
Phone: [+44 \(0\)1223 859353](tel:+44(0)1223859353) | Fax: [+1 \(415\) 651-8558](tel:+1(415)651-8558)

Biorbyt LLC

68 TW Alexander Drive
Research Triangle Park
Durham
NC 27713-2847
United States

Email: info@biorbyt.com, support@biorbyt.com
Phone: [+1 \(415\) 906-5211](tel:+1(415)906-5211) | Fax: [+1 \(415\) 651-8558](tel:+1(415)651-8558)



Standard curve for orb566899 ELISA kit.

Biorbyt Ltd.

7 Signet Court, Swann Road
Cambridge
CB5 8LA
United Kingdom

Email: info@biorbyt.com, support@biorbyt.com

Phone: [+44 \(0\)1223 859353](tel:+44(0)1223859353) | Fax: [+1 \(415\) 651-8558](tel:+1(415)6518558)

Biorbyt LLC

68 TW Alexander Drive
Research Triangle Park
Durham
NC 27713-2847
United States

Email: info@biorbyt.com, support@biorbyt.com

Phone: [+1 \(415\) 906-5211](tel:+1(415)9065211) | Fax: [+1 \(415\) 651-8558](tel:+1(415)6518558)