

## Product Datasheet

### Mouse TREM-1 ELISA Kit (orb565175)

|                        |  |
|------------------------|--|
| <b>Catalog Number</b>  | orb565175  |
| <b>Category</b>        | Assays and Kits  |
| <b>Description</b>     | Mouse TREM-1 ELISA Kit   |
| <b>Target</b>          | TREM-1   |
| <b>Reactivity</b>      | Mouse  |
| <b>UniProt ID</b>      | <b>Q9JKE2</b>  |
| <b>Assay Type</b>      | Sandwich   |
| <b>Assay Time</b>      | 4 hours  |
| <b>Range</b>           | 7.813-500pg/ml   |
| <b>Sensitivity</b>     | 4.688pg/ml   |
| <b>Sample Types</b>    | Serum,Plasma,Cell Culture Supernatant,Cell or tissue lysate,Other liquid samples |
| <b>Storage</b>         | 2 - 8 °C for 12 months   |
| <b>Note</b>            | For research use only  |
| <b>Expiration Date</b> | 6 months from date of receipt.   |

#### Biorbyt Ltd.

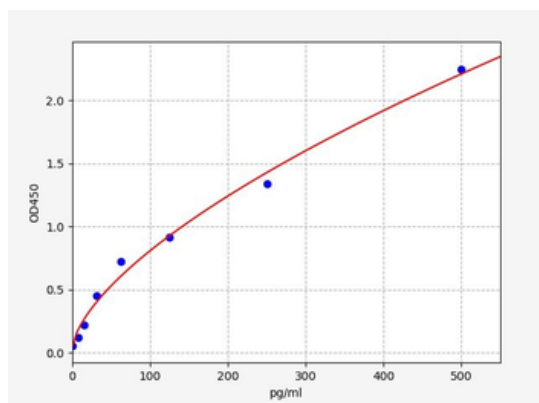
7 Signet Court, Swann Road  
Cambridge  
CB5 8LA  
United Kingdom

Email: [info@biorbyt.com](mailto:info@biorbyt.com), [support@biorbyt.com](mailto:support@biorbyt.com)  
Phone: [+44 \(0\)1223 859353](tel:+44(0)1223859353) | Fax: [+1 \(415\) 651-8558](tel:+1(415)651-8558)

#### Biorbyt LLC

68 TW Alexander Drive  
Research Triangle Park  
Durham  
NC 27713-2847  
United States

Email: [info@biorbyt.com](mailto:info@biorbyt.com), [support@biorbyt.com](mailto:support@biorbyt.com)  
Phone: [+1 \(415\) 906-5211](tel:+1(415)906-5211) | Fax: [+1 \(415\) 651-8558](tel:+1(415)651-8558)



Standard curve for orb565175 ELISA kit.

## Biorbyt Ltd.

7 Signet Court, Swann Road  
Cambridge  
CB5 8LA  
United Kingdom

Email: [info@biorbyt.com](mailto:info@biorbyt.com), [support@biorbyt.com](mailto:support@biorbyt.com)

Phone: [+44 \(0\)1223 859353](tel:+44(0)1223859353) | Fax: [+1 \(415\) 651-8558](tel:+1(415)651-8558)

## Biorbyt LLC

68 TW Alexander Drive  
Research Triangle Park  
Durham  
NC 27713-2847  
United States

Email: [info@biorbyt.com](mailto:info@biorbyt.com), [support@biorbyt.com](mailto:support@biorbyt.com)

Phone: [+1 \(415\) 906-5211](tel:+1(415)906-5211) | Fax: [+1 \(415\) 651-8558](tel:+1(415)651-8558)