

Product Datasheet

Human SLPI ELISA Kit (orb562041)

Catalog Number	orb562041
Category	Assays and Kits
Description	Human SLPI ELISA Kit
Target	SLPI
Reactivity	Human
UniProt ID	P03973
Assay Type	Sandwich
Assay Time	4 hours
Range	62.5-4000pg/ml
Sensitivity	37.5pg/ml
Sample Types	Serum,Plasma,Cell Culture Supernatant,Cell or tissue lysate,Other liquid samples
Storage	2 - 8 °C for 12 months
Note	For research use only
Expiration Date	6 months from date of receipt.

Biorbyt Ltd.

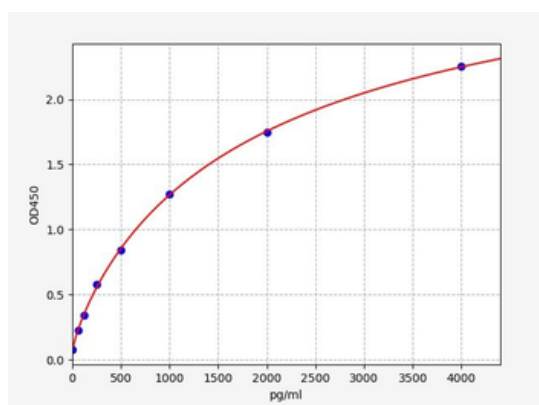
7 Signet Court, Swann Road
Cambridge
CB5 8LA
United Kingdom

Email: info@biorbyt.com, support@biorbyt.com
Phone: [+44 \(0\)1223 859353](tel:+44(0)1223859353) | Fax: [+1 \(415\) 651-8558](tel:+1(415)651-8558)

Biorbyt LLC

68 TW Alexander Drive
Research Triangle Park
Durham
NC 27713-2847
United States

Email: info@biorbyt.com, support@biorbyt.com
Phone: [+1 \(415\) 906-5211](tel:+1(415)906-5211) | Fax: [+1 \(415\) 651-8558](tel:+1(415)651-8558)



Standard curve for orb562041 ELISA kit.

Biorbyt Ltd.

7 Signet Court, Swann Road
Cambridge
CB5 8LA
United Kingdom

Email: info@biorbyt.com, support@biorbyt.com

Phone: [+44 \(0\)1223 859353](tel:+44(0)1223859353) | Fax: [+1 \(415\) 651-8558](tel:+1(415)651-8558)

Biorbyt LLC

68 TW Alexander Drive
Research Triangle Park
Durham
NC 27713-2847
United States

Email: info@biorbyt.com, support@biorbyt.com

Phone: [+1 \(415\) 906-5211](tel:+1(415)906-5211) | Fax: [+1 \(415\) 651-8558](tel:+1(415)651-8558)