

## Product Datasheet

### BHMT Rabbit Polyclonal Antibody (orb556064)

|                             |  |
|-----------------------------|--|
| <b>Catalog Number</b>       | orb556064  |
| <b>Category</b>             | Antibodies   |
| <b>Description</b>          | Rabbit polyclonal antibody to BHMT   |
| <b>Target</b>               | BHMT   |
| <b>Clonality</b>            | Polyclonal   |
| <b>Species/Host</b>         | Rabbit   |
| <b>Isotype</b>              | IgG  |
| <b>Conjugation</b>          | Unconjugated   |
| <b>Reactivity</b>           | Human, Mouse   |
| <b>Form/Appearance</b>      | Liquid: 0.1M Tris, 0.1M Glycine, 10% Glycerol (pH7). 0.01% Thimerosal was added as a preservative.                     |
| <b>Concentration</b>        | 1 mg/ml  |
| <b>Buffer/Preservatives</b> | 0.1M Tris, 0.1M Glycine, 10% Glycerol, 0.01% Thimerosal.   |
| <b>Purity</b>               | Purified by antigen-affinity chromatography.   |
| <b>Purification</b>         | Purified by antigen-affinity chromatography.   |
| <b>Immunogen</b>            | Recombinant protein encompassing a sequence within the center region of human BHMT. The exact sequence is proprietary. |
| <b>UniProt ID</b>           | <b>Q93088</b>  |
| <b>MW</b>                   | 45   |

**Biorbyt Ltd.**

7 Signet Court, Swann Road  
Cambridge  
CB5 8LA  
United Kingdom

Email: [info@biorbyt.com](mailto:info@biorbyt.com), [support@biorbyt.com](mailto:support@biorbyt.com)

Phone: [+44 \(0\)1223 859353](tel:+44(0)1223859353) | Fax: [+1 \(415\) 651-8558](tel:+1(415)651-8558)

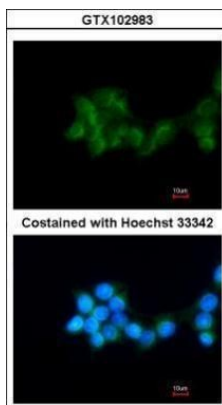
**Biorbyt LLC**

68 TW Alexander Drive  
Research Triangle Park  
Durham  
NC 27713  
United States

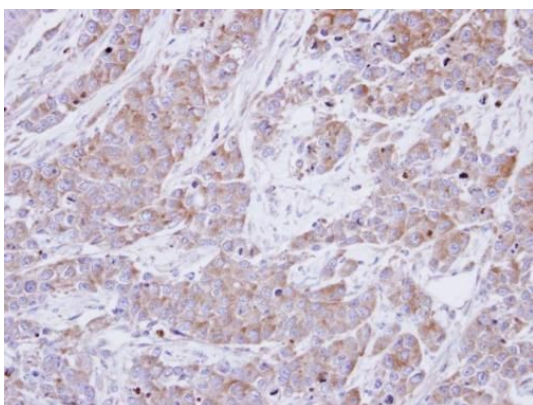
Email: [info@biorbyt.com](mailto:info@biorbyt.com), [support@biorbyt.com](mailto:support@biorbyt.com)

Phone: [+1 \(415\) 906-5211](tel:+1(415)906-5211) | Fax: [+1 \(415\) 651-8558](tel:+1(415)651-8558)

|                            |  |
|----------------------------|--|
| <b>Tested applications</b> | ICC, IHC-P, WB   |
| <b>Dilution range</b>      | WB: 1:500-1:3000 , IF: 1:100-1:1000 , IHC-P: 1:100-1:1000  |
| <b>Application notes</b>   | Positive control: HepG2 , mouse liver  |
| <b>Antibody Type</b>       | Primary Antibody   |
| <b>Storage</b>             | Store as concentrated solution. Centrifuge briefly prior to opening vial. For short-term storage (1-2 weeks), store at 4°C. For long-term storage, aliquot and store at -20°C or below. Avoid multiple freeze-thaw cycles. |
| <b>Note</b>                | For research use only  |
| <b>Expiration Date</b>     | 12 months from date of receipt.  |



Immunofluorescence analysis of HepG2 cells using BHMT antibody



Immunohistochemical staining of SG xenograft using BHMT antibody

**Biorbyt Ltd.**

7 Signet Court, Swann Road  
Cambridge  
CB5 8LA  
United Kingdom

Email: [info@biorbyt.com](mailto:info@biorbyt.com), [support@biorbyt.com](mailto:support@biorbyt.com)

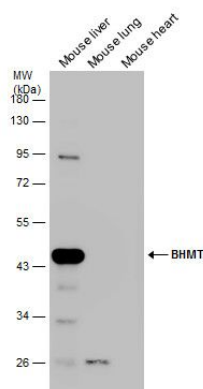
Phone: [+44 \(0\)1223 859353](tel:+44(0)1223859353) | Fax: [+1 \(415\) 651-8558](tel:+1(415)6518558)

**Biorbyt LLC**

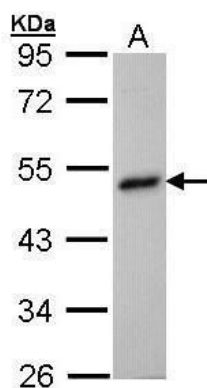
68 TW Alexander Drive  
Research Triangle Park  
Durham  
NC 27713  
United States

Email: [info@biorbyt.com](mailto:info@biorbyt.com), [support@biorbyt.com](mailto:support@biorbyt.com)

Phone: [+1 \(415\) 906-5211](tel:+1(415)9065211) | Fax: [+1 \(415\) 651-8558](tel:+1(415)6518558)



Western blot analysis of Various tissue using BHMT antibody



Western blot analysis of Hep G2 cells using BHMT antibody

**Biorbyt Ltd.**

7 Signet Court, Swann Road  
Cambridge  
CB5 8LA  
United Kingdom

Email: [info@biorbyt.com](mailto:info@biorbyt.com), [support@biorbyt.com](mailto:support@biorbyt.com)

Phone: [+44 \(0\)1223 859353](tel:+44(0)1223859353) | Fax: [+1 \(415\) 651-8558](tel:+1(415)651-8558)

**Biorbyt LLC**

68 TW Alexander Drive  
Research Triangle Park  
Durham  
NC 27713  
United States

Email: [info@biorbyt.com](mailto:info@biorbyt.com), [support@biorbyt.com](mailto:support@biorbyt.com)

Phone: [+1 \(415\) 906-5211](tel:+1(415)906-5211) | Fax: [+1 \(415\) 651-8558](tel:+1(415)651-8558)