

Product Datasheet

Rat CTSB ELISA Kit (Ready to Use) (orb554759)

Catalog Number	orb554759
Category	Assays and Kits
Description	Rat Cathepsin B (CTSB) Sandwich ELISA Kit Ready to Use: Pre-diluted detection reagents for convenient and simple assays.
Reactivity	Rat
Form/Appearance	Ready to Use
UniProt ID	P00787
Assay Type	Sandwich
Assay Time	3 hours
Range	0.156-10 ng/mL
Sensitivity	0.062 ng/mL
Sample Types	serum, plasma and other biological fluids
Storage	Store at -20°C
Note	For research use only
Entrez	64529
Expiration Date	Please enquire.

Biorbyt Ltd.

7 Signet Court, Swann Road
Cambridge
CB5 8LA
United Kingdom

Email: info@biorbyt.com, support@biorbyt.com

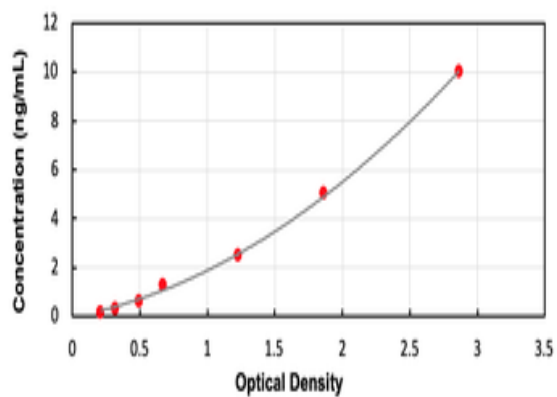
Phone: [+44 \(0\)1223 859353](tel:+44(0)1223859353) | Fax: [+1 \(415\) 651-8558](tel:+1(415)651-8558)

Biorbyt LLC

68 TW Alexander Drive
Research Triangle Park
Durham
NC 27713
United States

Email: info@biorbyt.com, support@biorbyt.com

Phone: [+1 \(415\) 906-5211](tel:+1(415)906-5211) | Fax: [+1 \(415\) 651-8558](tel:+1(415)651-8558)



Biorbyt Ltd.

7 Signet Court, Swann Road
Cambridge
CB5 8LA
United Kingdom

Email: info@biorbyt.com, support@biorbyt.com

Phone: [+44 \(0\)1223 859353](tel:+44(0)1223859353) | Fax: [+1 \(415\) 651-8558](tel:+1(415)6518558)

Biorbyt LLC

68 TW Alexander Drive
Research Triangle Park
Durham
NC 27713
United States

Email: info@biorbyt.com, support@biorbyt.com

Phone: [+1 \(415\) 906-5211](tel:+1(415)9065211) | Fax: [+1 \(415\) 651-8558](tel:+1(415)6518558)