

## Product Datasheet

### Mouse PRKAa1 ELISA Kit (Ready to Use) (orb553980)

<b>Catalog Number</b>	orb553980
<b>Category</b>	Assays and Kits
<b>Description</b>	Mouse Protein Kinase, AMP Activated Alpha 1 (PRKAa1) Sandwich ELISA Kit Ready to Use: Pre-diluted detection reagents for convenient and simple assays.
<b>Reactivity</b>	Mouse
<b>Form/Appearance</b>	Ready to Use
<b>Assay Type</b>	Sandwich
<b>Assay Time</b>	3 hours
<b>Range</b>	78.1-5000 pg/mL
<b>Sensitivity</b>	30.8 pg/mL
<b>Sample Types</b>	serum, plasma, tissue homogenates and other biological fluids
<b>Storage</b>	Store at -20°C
<b>Note</b>	For research use only
<b>Expiration Date</b>	Please enquire.

**Biorbyt Ltd.**

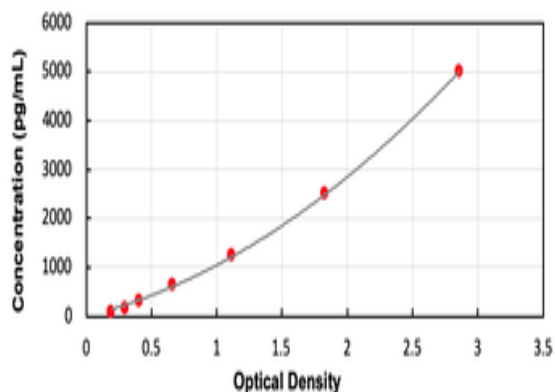
7 Signet Court, Swann Road  
Cambridge  
CB5 8LA  
United Kingdom

Email: [info@biorbyt.com](mailto:info@biorbyt.com), [support@biorbyt.com](mailto:support@biorbyt.com)  
Phone: [+44 \(0\)1223 859353](tel:+44(0)1223859353) | Fax: [+1 \(415\) 651-8558](tel:+1(415)651-8558)

**Biorbyt LLC**

68 TW Alexander Drive  
Research Triangle Park  
Durham  
NC 27713  
United States

Email: [info@biorbyt.com](mailto:info@biorbyt.com), [support@biorbyt.com](mailto:support@biorbyt.com)  
Phone: [+1 \(415\) 906-5211](tel:+1(415)906-5211) | Fax: [+1 \(415\) 651-8558](tel:+1(415)651-8558)



Standard curve for orb553980 ELISA kit.

## Biorbyt Ltd.

7 Signet Court, Swann Road  
Cambridge  
CB5 8LA  
United Kingdom

Email: [info@biorbyt.com](mailto:info@biorbyt.com), [support@biorbyt.com](mailto:support@biorbyt.com)

Phone: [+44 \(0\)1223 859353](tel:+44(0)1223859353) | Fax: [+1 \(415\) 651-8558](tel:+1(415)651-8558)

## Biorbyt LLC

68 TW Alexander Drive  
Research Triangle Park  
Durham  
NC 27713  
United States

Email: [info@biorbyt.com](mailto:info@biorbyt.com), [support@biorbyt.com](mailto:support@biorbyt.com)

Phone: [+1 \(415\) 906-5211](tel:+1(415)906-5211) | Fax: [+1 \(415\) 651-8558](tel:+1(415)651-8558)