

Product Datasheet

Human Melatonin Receptor 1A ELISA Kit (Ready to Use) (orb551515)

| | |
|------------------------|---|
| Catalog Number | orb551515 |
| Category | Assays and Kits |
| Description | Human Metallothionein 1 (Melatonin Receptor 1A) Sandwich ELISA Kit Ready to Use: Pre-diluted detection reagents for convenient and simple assays. |
| Reactivity | Human |
| Form/Appearance | Ready to Use |
| UniProt ID | P04731 |
| Assay Type | Sandwich |
| Assay Time | 3 hours |
| Range | 1.56-100 ng/mL |
| Sensitivity | 0.45 ng/mL |
| Sample Types | serum, plasma, tissue homogenates and other biological fluids |
| Storage | Store at -20°C |
| Note | For research use only |
| Entrez | 4489 |
| Expiration Date | Please enquire. |

Biorbyt Ltd.

7 Signet Court, Swann Road
Cambridge
CB5 8LA
United Kingdom

Email: info@biorbyt.com, support@biorbyt.com

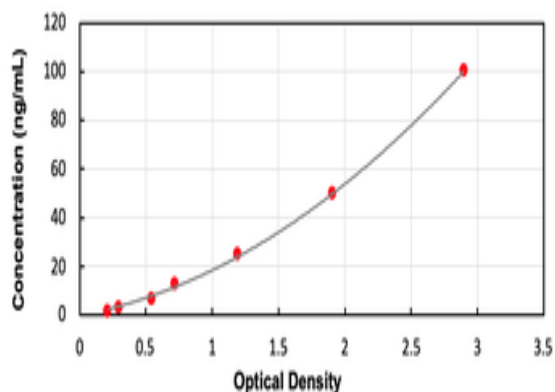
Phone: [+44 \(0\)1223 859353](tel:+44(0)1223859353) | Fax: [+1 \(415\) 651-8558](tel:+1(415)651-8558)

Biorbyt LLC

68 TW Alexander Drive
Research Triangle Park
Durham
NC 27713
United States

Email: info@biorbyt.com, support@biorbyt.com

Phone: [+1 \(415\) 906-5211](tel:+1(415)906-5211) | Fax: [+1 \(415\) 651-8558](tel:+1(415)651-8558)



Standard curve for orb551515 ELISA kit.

Biorbyt Ltd.

7 Signet Court, Swann Road
Cambridge
CB5 8LA
United Kingdom

Email: info@biorbyt.com, support@biorbyt.com

Phone: [+44 \(0\)1223 859353](tel:+44(0)1223859353) | Fax: [+1 \(415\) 651-8558](tel:+1(415)651-8558)

Biorbyt LLC

68 TW Alexander Drive
Research Triangle Park
Durham
NC 27713
United States

Email: info@biorbyt.com, support@biorbyt.com

Phone: [+1 \(415\) 906-5211](tel:+1(415)906-5211) | Fax: [+1 \(415\) 651-8558](tel:+1(415)651-8558)