

## Product Datasheet

# Human Fibrinogen ELISA Kit (Ready to Use) (orb550728)

|                        |   |
|------------------------|---|
| <b>Catalog Number</b>  | orb550728   |
| <b>Category</b>        | Assays and Kits   |
| <b>Description</b>     | Human Fibrinogen Alpha (Fibrinogen) Sandwich ELISA Kit Ready to Use: Pre-diluted detection reagents for convenient and simple assays. |
| <b>Reactivity</b>      | Human   |
| <b>Form/Appearance</b> | Ready to Use  |
| <b>UniProt ID</b>      | <b>P02671</b>   |
| <b>Assay Type</b>      | Sandwich  |
| <b>Assay Time</b>      | 3 hours   |
| <b>Range</b>           | 3.12-200 ng/mL  |
| <b>Sensitivity</b>     | 1.13 ng/mL  |
| <b>Sample Types</b>    | plasma and other biological fluids  |
| <b>Storage</b>         | Store at -20°C  |
| <b>Note</b>            | For research use only   |
| <b>Entrez</b>          | <b>2243</b>   |
| <b>Expiration Date</b> | Please enquire.   |

### Biorbyt Ltd.

7 Signet Court, Swann Road  
Cambridge  
CB5 8LA  
United Kingdom

Email: [info@biorbyt.com](mailto:info@biorbyt.com), [support@biorbyt.com](mailto:support@biorbyt.com)

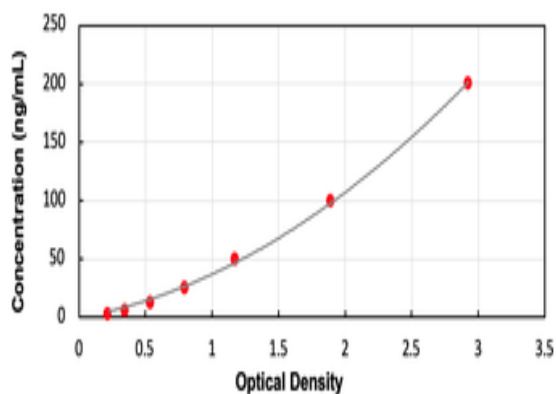
Phone: [+44 \(0\)1223 859353](tel:+44(0)1223859353) | Fax: [+1 \(415\) 651-8558](tel:+1(415)651-8558)

### Biorbyt LLC

68 TW Alexander Drive  
Research Triangle Park  
Durham  
NC 27713  
United States

Email: [info@biorbyt.com](mailto:info@biorbyt.com), [support@biorbyt.com](mailto:support@biorbyt.com)

Phone: [+1 \(415\) 906-5211](tel:+1(415)906-5211) | Fax: [+1 \(415\) 651-8558](tel:+1(415)651-8558)



## Biorbyt Ltd.

7 Signet Court, Swann Road  
Cambridge  
CB5 8LA  
United Kingdom

Email: [info@biorbyt.com](mailto:info@biorbyt.com), [support@biorbyt.com](mailto:support@biorbyt.com)

Phone: [+44 \(0\)1223 859353](tel:+44(0)1223859353) | Fax: [+1 \(415\) 651-8558](tel:+1(415)6518558)

## Biorbyt LLC

68 TW Alexander Drive  
Research Triangle Park  
Durham  
NC 27713  
United States

Email: [info@biorbyt.com](mailto:info@biorbyt.com), [support@biorbyt.com](mailto:support@biorbyt.com)

Phone: [+1 \(415\) 906-5211](tel:+1(415)9065211) | Fax: [+1 \(415\) 651-8558](tel:+1(415)6518558)