

## Product Datasheet

### Human CD21/CR2 Quick ELISA Kit (orb546951)

<b>Catalog Number</b>	orb546951
<b>Category</b>	Assays and Kits
<b>Description</b>	Human CD21/CR2 Quick ELISA Kit
<b>Target</b>	Complement receptor type 2
<b>Reactivity</b>	Human
<b>Immunogen</b>	Expression system for standard: CHO; Immunogen sequence: Ile21-71
<b>UniProt ID</b>	<b>P20023</b>
<b>MW</b>	112916 Da
<b>Tested applications</b>	ELISA
<b>Specificity</b>	Natural and recombinant human CD21
<b>Cross Reactivity</b>	There is no detectable cross-reactivity with other relevant proteins.
<b>Range</b>	31.2 pg/ml - 2,000 pg/ml
<b>Sensitivity</b>	20 pg/ml
<b>Sample Types</b>	cell culture supernatants, cell lysates, serum and plasma (heparin, EDTA).
<b>Storage</b>	Store at 4°C for 6 months. (Ships with gel ice, can store for up to 3 days in room temperature. Refrigerate upon receipt.)
<b>Note</b>	For research use only
<b>Expiration Date</b>	6 months from date of receipt.

**Biorbyt Ltd.**

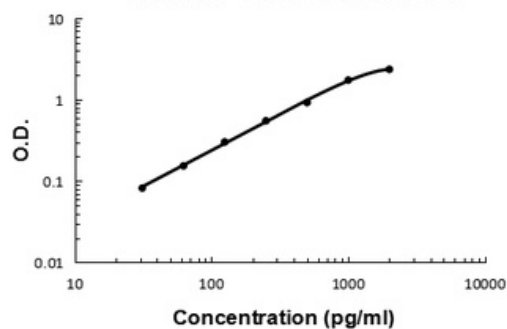
7 Signet Court, Swann Road  
Cambridge  
CB5 8LA  
United Kingdom

Email: [info@biorbyt.com](mailto:info@biorbyt.com), [support@biorbyt.com](mailto:support@biorbyt.com)  
Phone: [+44 \(0\)1223 859353](tel:+44(0)1223859353) | Fax: [+1 \(415\) 651-8558](tel:+1(415)651-8558)

**Biorbyt LLC**

68 TW Alexander Drive  
Research Triangle Park  
Durham  
NC 27713  
United States

Email: [info@biorbyt.com](mailto:info@biorbyt.com), [support@biorbyt.com](mailto:support@biorbyt.com)  
Phone: [+1 \(415\) 906-5211](tel:+1(415)906-5211) | Fax: [+1 \(415\) 651-8558](tel:+1(415)651-8558)

**Human CD21 ELISA Kit**

Human CD21 PicoKine ELISA Kit standard curve

**Biorbyt Ltd.**

7 Signet Court, Swann Road  
Cambridge  
CB5 8LA  
United Kingdom

Email: [info@biorbyt.com](mailto:info@biorbyt.com), [support@biorbyt.com](mailto:support@biorbyt.com)

Phone: [+44 \(0\)1223 859353](tel:+44(0)1223859353) | Fax: [+1 \(415\) 651-8558](tel:+1(415)651-8558)

**Biorbyt LLC**

68 TW Alexander Drive  
Research Triangle Park  
Durham  
NC 27713  
United States

Email: [info@biorbyt.com](mailto:info@biorbyt.com), [support@biorbyt.com](mailto:support@biorbyt.com)

Phone: [+1 \(415\) 906-5211](tel:+1(415)906-5211) | Fax: [+1 \(415\) 651-8558](tel:+1(415)651-8558)