

## Product Datasheet

# Malachite Green Phosphate Colorimetric Microplate Assay Kit (orb545607)

<b>Catalog Number</b>	orb545607
<b>Category</b>	Assays and Kits
<b>Description</b>	Detection and Quantification of Phosphate Content.
<b>Reactivity</b>	All
<b>Tested applications</b>	FA
<b>Application notes</b>	Detection Method: Colorimetric
<b>Assay Type</b>	Detection
<b>Range</b>	1 $\mu\text{mol/L}$ - 50 $\mu\text{mol/L}$
<b>Sample Types</b>	Urine, Serum, Plasma, Tissue extracts, Cell lysate, Cell culture media, Other biological fluids
<b>Storage</b>	Shipped and store at 4°C for 6 months.
<b>Hazard Information</b>	Non-Toxic
<b>Note</b>	For research use only
<b>Expiration Date</b>	12 months from date of receipt.

### Biorbyt Ltd.

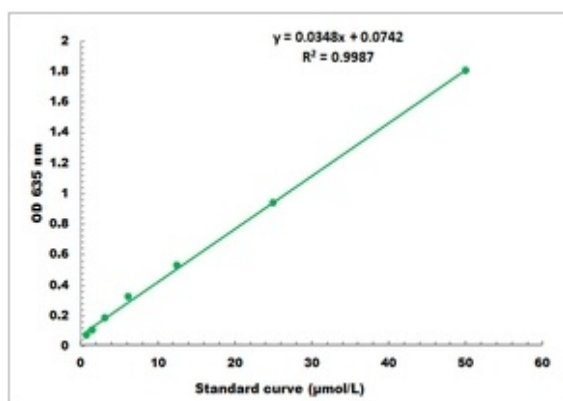
7 Signet Court, Swann Road  
Cambridge  
CB5 8LA  
United Kingdom

Email: [info@biorbyt.com](mailto:info@biorbyt.com), [support@biorbyt.com](mailto:support@biorbyt.com)  
Phone: [+44 \(0\)1223 859353](tel:+44(0)1223859353) | Fax: [+1 \(415\) 651-8558](tel:+1(415)651-8558)

### Biorbyt LLC

68 TW Alexander Drive  
Research Triangle Park  
Durham  
NC 27713-2847  
United States

Email: [info@biorbyt.com](mailto:info@biorbyt.com), [support@biorbyt.com](mailto:support@biorbyt.com)  
Phone: [+1 \(415\) 906-5211](tel:+1(415)906-5211) | Fax: [+1 \(415\) 651-8558](tel:+1(415)651-8558)



Representative Standard Curve

**Biorbyt Ltd.**

7 Signet Court, Swann Road

Cambridge

CB5 8LA

United Kingdom

Email: [info@biorbyt.com](mailto:info@biorbyt.com), [support@biorbyt.com](mailto:support@biorbyt.com)Phone: [+44 \(0\)1223 859353](tel:+44(0)1223859353) | Fax: [+1 \(415\) 651-8558](tel:+1(415)651-8558)**Biorbyt LLC**

68 TW Alexander Drive

Research Triangle Park

Durham

NC 27713-2847

United States

Email: [info@biorbyt.com](mailto:info@biorbyt.com), [support@biorbyt.com](mailto:support@biorbyt.com)Phone: [+1 \(415\) 906-5211](tel:+1(415)906-5211) | Fax: [+1 \(415\) 651-8558](tel:+1(415)651-8558)