

Product Datasheet

MDM2 Antibody (Biotin) (orb535759)

Catalog Number	orb535759
Category	Antibodies
Description	Rabbit polyclonal antibody against MDM2 conjugated to Biotin
Target	MDM2
Clonality	Polyclonal
Species/Host	Rabbit
Conjugation	Biotin
Reactivity	Human, Mouse, Rat
Concentration	1 mg/ml
Buffer/Preservatives	136.36mM Ethanolamine, 133.23 mM Chlorides, 9.55mM Phosphates, 9.55mM Sodium Bicarbonate.
Purification	Peptide Affinity Purified
Immunogen	Synthetic peptide from the mid-protein of Human MDM2 (aa. 100-200)
UniProt ID	Q00987
MW	50 kDa
Tested applications	IHC, WB
Dilution range	WB (1:1000); IHC (1:50)
Specificity	Detects ~50 kDa. ~50 kDa band is isoform 2 or 3.

Biorbyt Ltd.

7 Signet Court, Swann Road
Cambridge
CB5 8LA
United Kingdom

Email: info@biorbyt.com, support@biorbyt.com

Phone: [+44 \(0\)1223 859353](tel:+44(0)1223859353) | Fax: [+1 \(415\) 651-8558](tel:+1(415)651-8558)

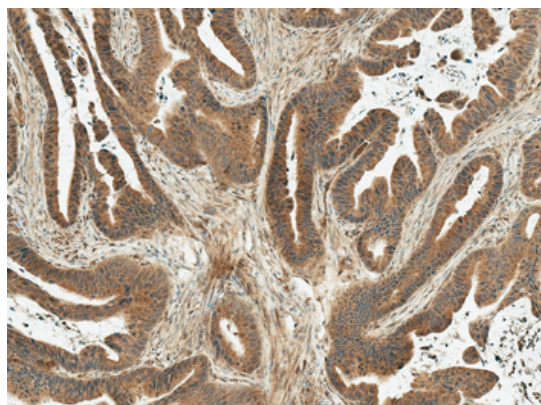
Biorbyt LLC

68 TW Alexander Drive
Research Triangle Park
Durham
NC 27713-2847
United States

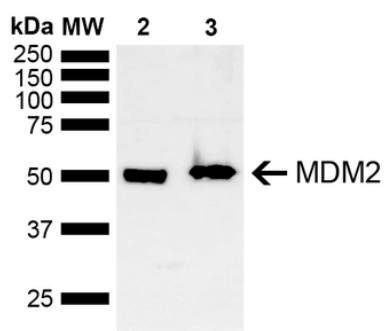
Email: info@biorbyt.com, support@biorbyt.com

Phone: [+1 \(415\) 906-5211](tel:+1(415)906-5211) | Fax: [+1 \(415\) 651-8558](tel:+1(415)651-8558)

Storage	Conjugated antibodies should be stored according to the product label
Note	For research use only
Entrez	4193
NCBI	NP_001138811.1
Expiration Date	12 months from date of receipt.



Immunohistochemistry analysis using Rabbit Anti-MDM2 Polyclonal Antibody. Tissue: Stomach Cancer. Species: Human. Fixation: Formalin Fixed Paraffin-Embedded. Primary Antibody: Rabbit Anti-MDM2 Polyclonal Antibody at 1:50 for 30 min at RT. Counterstain: Hematoxylin. Magnification: 10X. HRP-DAB Detection.



Western blot analysis of Mouse, Rat Brain showing detection of ~40 kDa MDM2 protein using Rabbit Anti-MDM2 Polyclonal Antibody. Lane 1: Molecular Weight Ladder (MW). Lane 2: Mouse Brain. Lane 3: Rat Brain. Load: 15 µg. Block: 5% Skim Milk in 1X TBST. Primary Antibody: Rabbit Anti-MDM2 Polyclonal Antibody at 1:1000 for 2 hours at RT. Secondary Antibody: Goat Anti-Rabbit IgG: HRP at 1:5000 for 1 hour at RT. Color Development: ECL solution for 5 min at RT. Predicted/Observed Size: ~40 kDa. Other Band (s): Isoform 2 or 3.

Biorbyt Ltd.

7 Signet Court, Swann Road
Cambridge
CB5 8LA
United Kingdom

Email: info@biorbyt.com, support@biorbyt.com
Phone: +44 (0)1223 859353 | Fax: +1 (415) 651-8558

Biorbyt LLC

68 TW Alexander Drive
Research Triangle Park
Durham
NC 27713-2847
United States

Email: info@biorbyt.com, support@biorbyt.com
Phone: +1 (415) 906-5211 | Fax: +1 (415) 651-8558