

## Product Datasheet

# BlueElf Prestained Protein Marker (5-245kDa) (orb533732)

<b>Catalog Number</b>	orb533732
<b>Category</b>	Proteins
<b>Description</b>	The BlueElf Prestained Protein Marker is a three-color protein standard with 13 pre-stained purified proteins. Proteins are covalently coupled with a blue chromophore except for two reference bands, one green at 25 kDa and one red one at 75 kDa respectively, when separated on SDS-PAGE (Tris-glycine buffer).
<b>Form/Appearance</b>	liquid (supplied in 20 mM Tris-phosphate pH 7.5 , 2% SDS, 0.2 mM DTT, 3.6 M urea and 15% glycerol)
<b>Purity</b>	> 95% (SDS-PAGE)
<b>Dilution range</b>	3-5 µl Protein Molecular Weight Marker per lane
<b>Application notes</b>	Visualization of protein migration during SDS-polyacrylamide gel electrophoresis. Verification of protein transfer onto membranes after Western blotting. Approximate sizing of proteins on SDS-polyacrylamide gels and Western blots
<b>Storage</b>	store at -20 °C
<b>Hazard Information</b>	Non-Toxic
<b>Note</b>	For research use only
<b>Expiration Date</b>	12 months from date of receipt.

**Biorbyt Ltd.**

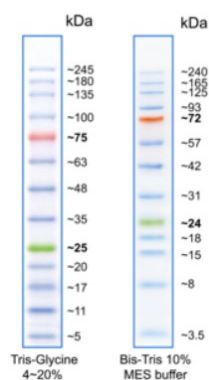
7 Signet Court, Swann Road  
Cambridge  
CB5 8LA  
United Kingdom

Email: [info@biorbyt.com](mailto:info@biorbyt.com), [support@biorbyt.com](mailto:support@biorbyt.com)  
Phone: [+44 \(0\)1223 859353](tel:+44(0)1223859353) | Fax: [+1 \(415\) 651-8558](tel:+1(415)651-8558)

**Biorbyt LLC**

68 TW Alexander Drive  
Research Triangle Park  
Durham  
NC 27713-2847  
United States

Email: [info@biorbyt.com](mailto:info@biorbyt.com), [support@biorbyt.com](mailto:support@biorbyt.com)  
Phone: [+1 \(415\) 906-5211](tel:+1(415)906-5211) | Fax: [+1 \(415\) 651-8558](tel:+1(415)651-8558)



SDS-Page analysis of BlueElf Prestained Protein Marker.

**Biorbyt Ltd.**

7 Signet Court, Swann Road  
Cambridge  
CB5 8LA  
United Kingdom

Email: [info@biorbyt.com](mailto:info@biorbyt.com), [support@biorbyt.com](mailto:support@biorbyt.com)

Phone: [+44 \(0\)1223 859353](tel:+44(0)1223859353) | Fax: [+1 \(415\) 651-8558](tel:+1(415)6518558)

**Biorbyt LLC**

68 TW Alexander Drive  
Research Triangle Park  
Durham  
NC 27713-2847  
United States

Email: [info@biorbyt.com](mailto:info@biorbyt.com), [support@biorbyt.com](mailto:support@biorbyt.com)

Phone: [+1 \(415\) 906-5211](tel:+1(415)9065211) | Fax: [+1 \(415\) 651-8558](tel:+1(415)6518558)