

Product Datasheet

BlueEye Prestained Protein Marker (10-245kDa) (orb533731)

Catalog Number	orb533731
Category	Proteins
Description	The BlueEye Prestained Protein Marker is a three-color protein standard with 12 pre-stained purified proteins. Proteins are covalently coupled with a blue chromophore except for two reference bands, one green at 25 kDa and one red one at 75 kDa respectively, when separated on SDS-PAGE (Tris-glycine buffer).
Form/Appearance	liquid (supplied in 20 mM Tris-phosphate pH 7.5 , 2% SDS, 0.2 mM DTT, 3.6 M urea and 15% glycerol)
Purity	> 95% (SDS-PAGE)
Dilution range	3-5 µl Protein Molecular Weight Marker per lane
Application notes	Visualization of protein migration during SDS-polyacrylamide gel electrophoresis. Verification of protein transfer onto membranes after Western blotting. Approximate sizing of proteins on SDS-polyacrylamide gels and Western blots
Storage	store at -20 °C
Hazard Information	Non-Toxic
Note	For research use only
Expiration Date	12 months from date of receipt.

Biorbyt Ltd.

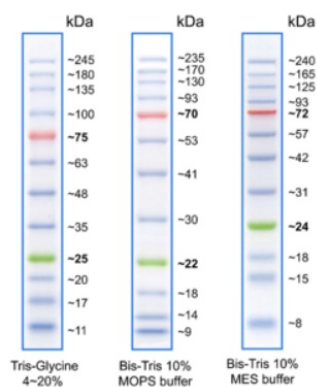
7 Signet Court, Swann Road
Cambridge
CB5 8LA
United Kingdom

Email: info@biorbyt.com, support@biorbyt.com
Phone: [+44 \(0\)1223 859353](tel:+44(0)1223859353) | Fax: [+1 \(415\) 651-8558](tel:+1(415)651-8558)

Biorbyt LLC

68 TW Alexander Drive
Research Triangle Park
Durham
NC 27713-2847
United States

Email: info@biorbyt.com, support@biorbyt.com
Phone: [+1 \(415\) 906-5211](tel:+1(415)906-5211) | Fax: [+1 \(415\) 651-8558](tel:+1(415)651-8558)



WB analysis of orb533731.

Biorbyt Ltd.

7 Signet Court, Swann Road
Cambridge
CB5 8LA
United Kingdom

Email: info@biorbyt.com, support@biorbyt.com

Phone: [+44 \(0\)1223 859353](tel:+44(0)1223859353) | Fax: [+1 \(415\) 651-8558](tel:+1(415)6518558)

Biorbyt LLC

68 TW Alexander Drive
Research Triangle Park
Durham
NC 27713-2847
United States

Email: info@biorbyt.com, support@biorbyt.com

Phone: [+1 \(415\) 906-5211](tel:+1(415)9065211) | Fax: [+1 \(415\) 651-8558](tel:+1(415)6518558)