

Product Datasheet

CX3CR1 Rabbit Polyclonal Antibody (PE) (orb485433)

Catalog Number	orb485433
Category	Antibodies
Description	CX3CR1 Rabbit Polyclonal Antibody (PE) is a PE conjugated antibody targeting CX3CR1. This antibody is suitable for FC, IF. It exhibits reactivity with Mouse, Rat samples.
Target	CX3CR1
Clonality	Polyclonal
Species/Host	Rabbit
Isotype	IgG
Conjugation	PE
Reactivity	Mouse, Rat
Predicted Reactivity	Bovine, Canine, Human, Rabbit
Concentration	1mg/ml
Buffer/Preservatives	0.01M TBS (pH7.4) with 1% rAlbumin, 0.02% Proclin300 and 50% Glycerol.
Purification	Affinity purified by Protein A
Immunogen	KLH conjugated synthetic peptide derived from human CX3CR1 (151-250/355aa)
Tested applications	FC, IF
Dilution range	Flow-Cyt=1ug/Test, IF=1:100-500

Biorbyt Ltd.

7 Signet Court, Swann Road
Cambridge
CB5 8LA
United Kingdom

Email: info@biorbyt.com, support@biorbyt.com

Phone: [+44 \(0\)1223 859353](tel:+44(0)1223859353) | Fax: [+1 \(415\) 651-8558](tel:+1(415)651-8558)

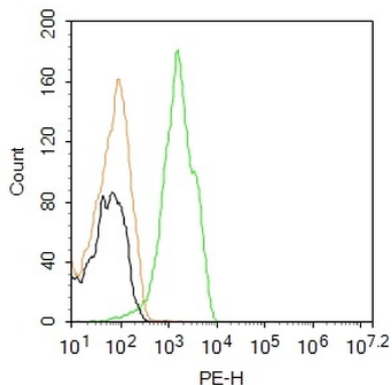
Biorbyt LLC

68 TW Alexander Drive
Research Triangle Park
Durham
NC 27713
United States

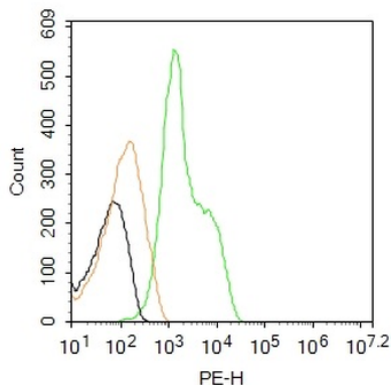
Email: info@biorbyt.com, support@biorbyt.com

Phone: [+1 \(415\) 906-5211](tel:+1(415)906-5211) | Fax: [+1 \(415\) 651-8558](tel:+1(415)651-8558)

Antibody Type	Primary Antibody
Storage	Shipped at 4°C. Store at -20°C for one year. Avoid repeated freeze/thaw cycles.
Note	For research use only
Expiration Date	12 months from date of receipt.



Blank control: THP-1. Primary Antibody (green line): Rabbit Anti-CX3CR1 antibody (orb485433), dilution: 2 µg/10⁶ cells, Isotype Control Antibody (orange line): Rabbit IgG. Protocol, The cells were fixed with 4% PFA (10 min at room temperature) and then permeabilized with 90% ice-cold methanol for 20 min at -20°C. The cells were then incubated in 5% BSA to block non-specific protein-protein interactions for 30 min at room temperature. Cells stained with Primary Antibody for 30 min at room temperature. Acquisition of 20000 events was performed.



Blank control: U251. Primary Antibody (green line): Rabbit Anti-CX3CR1 antibody (orb485433), dilution: 2 µg/10⁶ cells, Isotype Control Antibody (orange line): Rabbit IgG. Protocol, The cells were fixed with 4% PFA (10 min at room temperature) and then permeabilized with 90% ice-cold methanol for 20 min at -20°C. The cells were then incubated in 5% BSA to block non-specific protein-protein interactions for 30 min at room temperature. Cells stained with Primary Antibody for 30 min at room temperature. Acquisition of 20000 events was performed.

Biorbyt Ltd.

7 Signet Court, Swann Road
Cambridge
CB5 8LA
United Kingdom

Email: info@biorbyt.com, support@biorbyt.com
Phone: +44 (0)1223 859353 | Fax: +1 (415) 651-8558

Biorbyt LLC

68 TW Alexander Drive
Research Triangle Park
Durham
NC 27713
United States

Email: info@biorbyt.com, support@biorbyt.com
Phone: +1 (415) 906-5211 | Fax: +1 (415) 651-8558